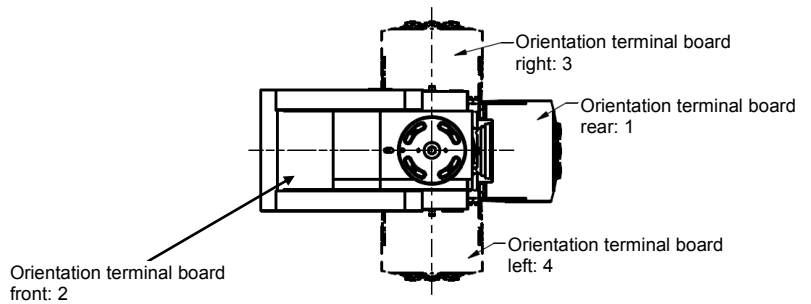
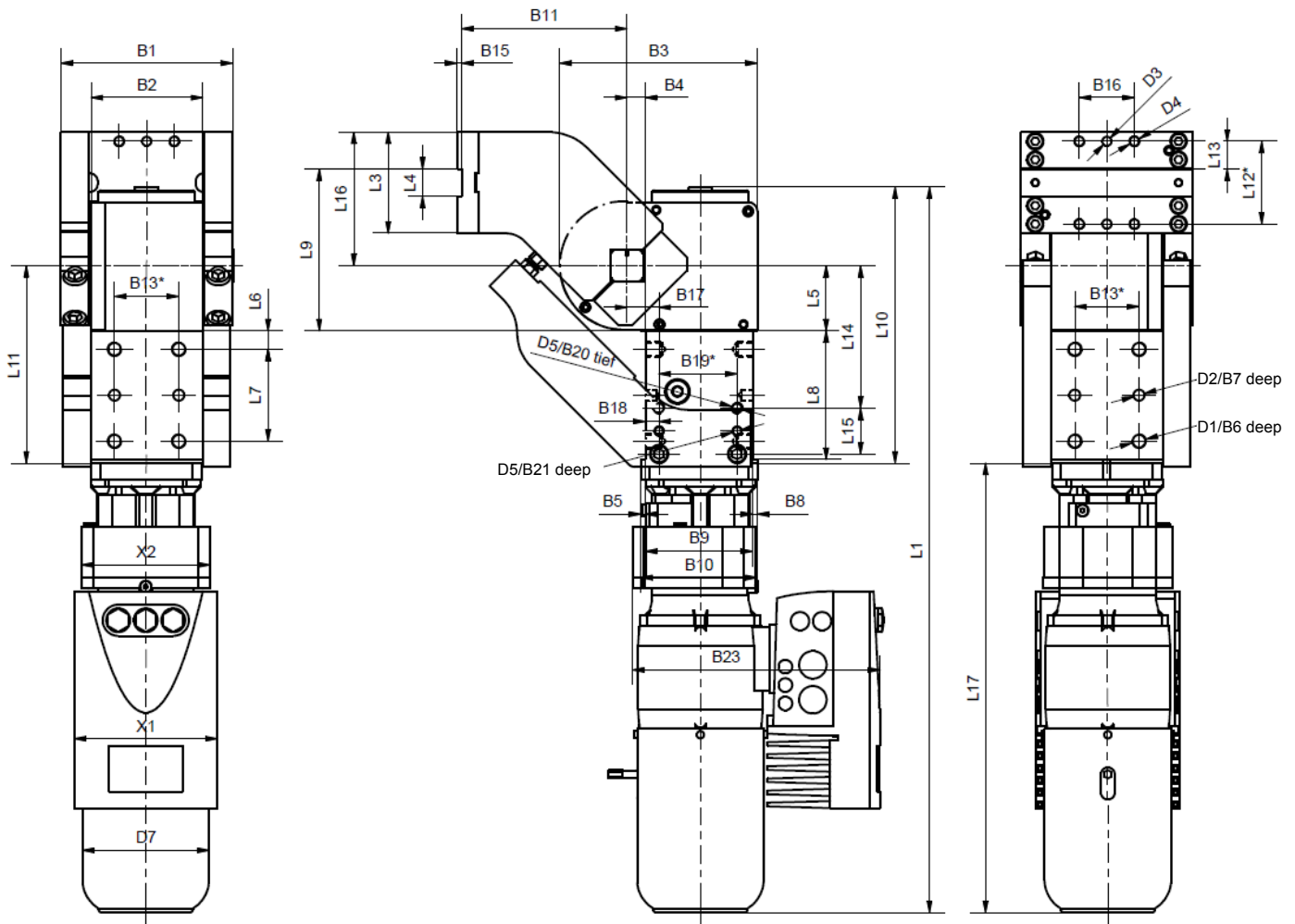


# Globalial compact swivel unit

with constant torque and emergency brake  
with Tünkers motor

## EGS ... M01a



**Ordering example:**

EGS 250 S A03 M01a1ba

EGS 250: Type  
S: External stop (SG included)  
A03: Swivel arm version  
M01a1ba: Motor version (see page 2)

**Ordering code swivel arm versions:**

... A00: Without swivel arm  
... A01: Standard swivel arm  
... A03: Swivel arm version A01 mirrored

**Standard opening angle:**

EGS A01/A03: max. 180°  
EGS2 A01: max. 120°  
EGS2 A03: max. 90°

Torque caused by load = mass of clamp  
arm complete x distance of load center

Please send application for approval.

\*Tolerance for dowel holes ± 0.02, for threaded holes ± 0.2.

# Global compact swivel unit

with constant torque and emergency brake  
with Tünkers motor

## EGS ... M01a

Type	** Max. perm. load torque ML max.	Transverse load torque MQ max.	Swivel time at opening angle of max. 180°	Weight (without swivel traverse)	Holding brake			
					Nominal voltage DC (V)	Operating current I (A)	Duty cycle	Brake torque
EGS 125	125 Nm	400 Nm	2.5	29	180	0.12	100% ED	5 Nm
EGS 250	250 Nm	400 Nm	2.5	37	180	0.12	100% ED	5 Nm
EGS 500	500 Nm	400 Nm	2.5	55	180	0.12	100% ED	5 Nm

Drive motor											
Type	Nominal voltage AC (V)	Standstill current I <sub>0</sub> (A)	Duty cycle	Rated speed n <sub>N</sub> [1/min]	Motor-M <sub>0</sub> at n <sub>B</sub>	Degree of protection DIN 40050	B1	B2 ±0.1	B3	B4	B5
EGS 125	400	0.95	20% ED	1380	0.8	IP 54	167	101.5	202.5	10	5
EGS 250	400	0.96	20% ED	1380	1.73	IP 54	187	122	215	20	5
EGS 500	400	3.6	20% ED	1380	5.3	IP 54	216	140	280	20	10

Type	B6	B7	B8	B9 ±0.1	B10	B11	B13*	B15	B16 ±0.2	B17 ±0.1	B18 ±0.1	B19*	B20	B21	B23	X1	X2	D1	D2 H7	D3 H7
EGS 125	18	12	5	120	130	168	50	5	60	25	15	85	16	12	235.5	156	140	M12	10	10
EGS 250	16	12	5	117	127	180	70	5	60	35	15	85	16	12	269	156	140	M16	12	10
EGS 500	18	15	10	145	165	239	70	5	80	47	27	100	16	12	284	156	140	M16	12	12

Type	D4	D5	D6 H7	L1 ~	L3	L4 ±0.1	L5 ±0.1	L6 ±0.1	L7 ±0.1	L8 +0.1	L9	L10 ~	L11 ±0.02	L12* ±0.1	L13 ±0.1	L14 ±0.1	L15*	L16	L17
EGS 125	M12	M12	10	710	100	30	77.5	15	50	80	147.5	238.5	195	90	30	130	50	214.5	434
EGS 250	M12	M12	10	789	110	30	71	20	100	140	176	296.5	233	90	30	155	50	145.2	471
EGS 500	M16	M16	12	930.5	150	30	110	20	100	140	248	379.5	260	120	45	125	90	198	551

### Ordering example motor:

M01a1ba

M: Motor  
01: Manufacturer Tünkers  
a: Motor version  
1: Orientation terminal board  
b: Converter version  
a: Fieldbus system

### Motor version:

a: single brake  
b: double brake

### Orientation terminal board:

1: rear  
2: front  
3: right  
4: left

### Converter version:

a: without  
b: mounted  
c: placed separately  
d: cabinet

### Fieldbus system:

a: without  
b: Profinet  
c: Ethernet/IP  
d: Profibus  
e: Devicenet

