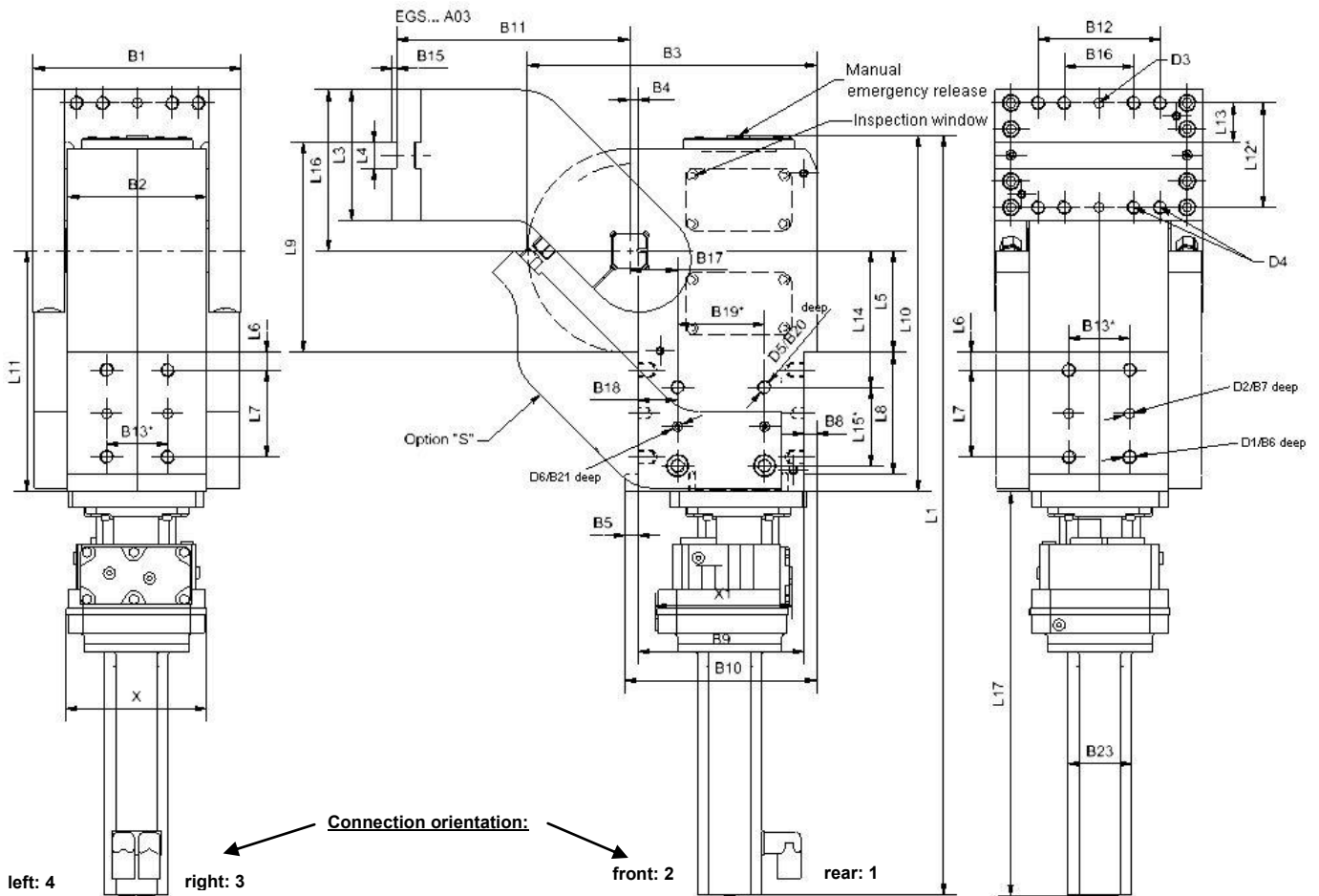


# Globodial electric swivel unit

with constant torque, servo drive and emergency brake

# EGS... M03



**Ordering example:**

EGS 500 S A03 M03a1aa

EGS 500: Type  
 S: External stop (SG included)  
 A03: Swivel arm version  
 M03a1aa: Motor version

**Ordering code swivel arm versions:**

- ... A00: Without swivel arm
- ... A01: Standard swivel arm
- ... A03: Swivel arm version A01 mirrored

**Please send application for approval!**

\* Tolerance for dowel holes ± 0.02, for threaded holes ± 0.2.

**Standard opening angle:**

- EGS A01/A03: max. 180°
- EGS2 A01: max. 120°
- EGS2 A03: max. 90°

Torque caused by load = mass of clamp arm complete x distance of load center

**Ordering example motor:**

M03a1aa

M: Motor  
 03: Manufacturer SEW  
 a: Motor version  
 1: Connection orientation  
 a: Converter version  
 a: Fieldbus system

**Motor version:**

a: Standard

**Connection orientation:**

- 1: rear
- 2: front
- 3: right
- 4: left
- 5: 45° rear right
- 6: 45° rear left
- 7: 45° front right
- 8: 45° front left

**Converter version:**

- a: without
- b: -
- c: placed separately
- d: cabinet

**Fieldbus system:**

- a: without
- b: Profinet
- c: Ethernet/IP
- d: Profibus
- e: Devicenet

# Globodial electric swivel unit

with constant torque, servo drive and emergency brake

## EGS... M03

Type	** Max. permitted load torque ML max.	Transverse load torque MQ max.	Swivel time at opening angle of max. 180°	Weight (without swivel traverse)	Holding brake			
					Nominal voltage	Duty cycle	Brake torque	SEW brake type
EGS 125	125 Nm	200 Nm	3.3 sec.	27	24 VDC	100% ED	1.9 Nm	BK
EGS 250	250 Nm	400 Nm	3.3 sec.	32	24 VDC	100% ED	2.4 Nm	BK
EGS 500	500 Nm	900 Nm	3.3 sec.	50	24 VDC	100% ED	3.9 Nm	BK

Type	Drive motor										B1	B2 ±0.1
	Nominal voltage VAC	Standstill current I <sub>0</sub>	Duty cycle	Max. perm. current I <sub>max</sub>	Max. perm. frequency	Rated speed n <sub>N</sub> [1/min]	Motor-M <sub>0</sub> at n <sub>B</sub>	Controller MoviPRO of SEW	Degree of protection DIN40050			
EGS 125	400 V	0.95 A	S1	6 A	150 Hz	3000	0.8 Nm	0.55 kW	IP 65		166	102
EGS 250	400 V	0.96 A	S1	5.1 A	150 Hz	3000	1.3 Nm	0.55 kW	IP 65		187	122
EGS 500	400 V	3.6 A	S1	21.6 A	150 Hz	3000	5.3 Nm	2.2 kW	IP 65		216	140

Type	B3	B4	B5	B6	B7	B8	B9 ±0.1	B10	B11	B12 ±0.2	B13*	B15	B16 ±0.2	B17 ±0.1	B18 ±0.1	B19*	B20	B21	B23	X	X1
EGS 125	203	10	5	16	12	5	120	130	168	-	50	5	60	25	15	85	16	12	57	161	157
EGS 250	215	20	5	16	12	5	117	127	180	-	70	5	60	35	15	85	16	12	73	161	157
EGS 500	280	20	10	16	12	10	145	165	239	-	70	5	80	47	27	100	18	15	73	161	157

Type	D1	D2 H7	D3 H7	D4	D5	D6 H7	L1 ~	L3	L4 ±0.1	L5 ±0.1	L6 ±0.1	L7 ±0.1	L8 +0.1	L9	L10 ~	L11 ±0.02	L12* ±0.1	L13 ±0.1	L14 ±0.1	L15*	L16	L17
EGS 125	M12	10	10	M12	M12	10	596	110	30	77.5	15	50	80	174.5	276	195	90	30	130	50	137	320
EGS 250	M16	12	10	M12	M12	10	687	110	30	71	20	100	140	176	300	215	90	30	155	50	145	387
EGS 500	M16	12	12	M16	M16	12	844	150	30	110	20	100	140	248	380	260	120	45	125	90	198	464

