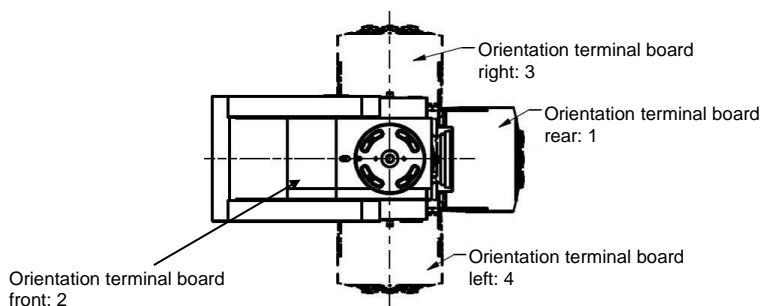
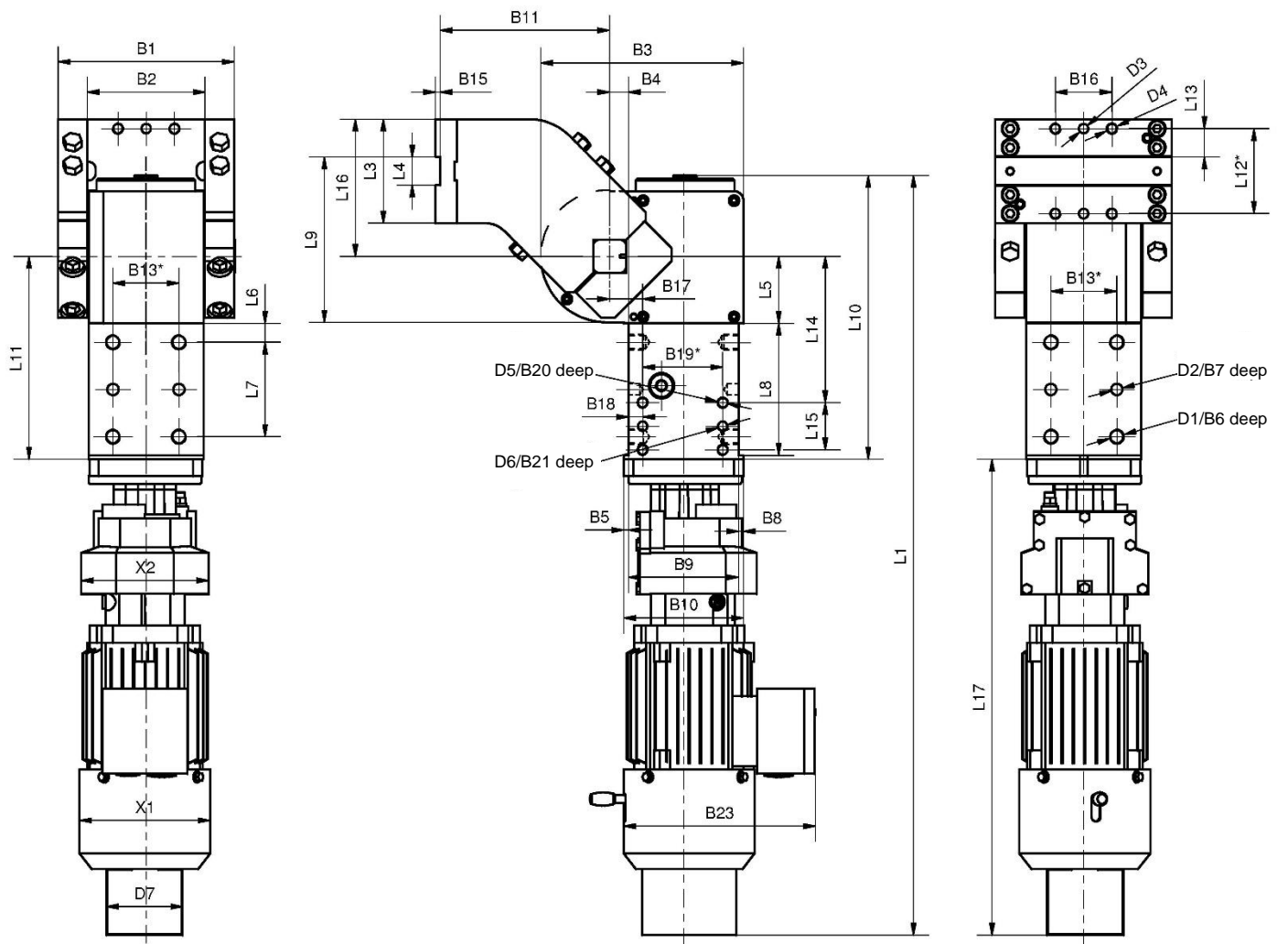


Globodial electric swivel unit

with constant torque and emergency brake,
with Siemens motor

EGS ... M04



Ordering example:

EGS 250 S A03 M04a1cb

EGS 250: Type
S: External stop (SG included)
A03: Swivel arm version
M04a1cb: Motor version (see page 2)

Ordering code swivel arm versions:

... A00: Without swivel arm
... A01: Standard swivel arm
... A03: Swivel arm version A01 mirrored

Standard opening angle:

EGS A01/A03: max. 180°
EGS2 A01: max. 120°
EGS2 A03: max. 90°

Torque caused by load = mass of clamp
arm complete x distance of load center

Please send application for approval.

*Tolerance for dowel holes ± 0.02 , for threaded holes ± 0.2 .

Global electric swivel unit

with constant torque and emergency brake,
with Siemens motor

EGS ... M04

Type	** Max. permitted load torque ML max.	Transverse load torque MQ max.	Swivel time at opening angle of max. 180°	Weight (without swivel traverse)	Holding brake			
					Nominal voltage DC (V)	Duty cycle	Brake torque	Brake type
EGS 250	250 Nm	400 Nm		37	180	100%	5 Nm	L4/5
EGS 500	500 Nm	400 Nm		55	180	100%	10 Nm	L8/10

Drive motor												
Type	Nominal voltage AC	Drive power	Nominal current I ₀	Duty cycle	Rated speed n _N [1/min]	Motor-M ₀ at n _B	Degree of protection DIN 40050	B1	B2 ±0,1	B3	B4	B5
EGS 250	400V	0,55 kW	1,54	20%	1370	3,83	IP55	187	125	215	20	5
EGS 500	400V	0,75 kW	1,73	20%	1450	4,94	IP55	216	143	280	20	10

Typ	B6	B7	B8	B9 ±0,1	B10	B11	B13*	B15	B16 ±0,2	B17 ±0,1	B18 ±0,1	B19*	B20	B21	B23	X1	X2	D1	D2 H7	D3 H7
EGS 250	16	12	5	117	127	180	70	5	60	35	15	85	16	12	204	139	135	M16	12	10
EGS 500	16	12	10	145	165	239	70	5	80	47	27	100	18	15	228	157	146	M16	12	12

Typ	D4	D5	D6 H7	L1 ~	L3	L4 ±0,1	L5 ±0,1	L6 ±0,1	L7 ±0,1	L8 +0,1	L9	L10 ~	L11 ±0,02	L12* ±0,1	L13 ±0,1	L14 ±0,1	L15*	L16	L17
EGS 250	M12	M12	10	805	110	30	71	20	100	140	176	301	215	90	30	155	50	145,2	504
EGS 500	M16	M16	12	981	150	30	110	20	100	140	303	379,5	260	120	45	125	90	198	602

Ordering example motor:

M04a1cb

M: Motor
04: Manufacturer Siemens
a: Motor version
1: Connection orientation
c: Converter version
b: Fieldbus system

Motor version:

a: Standard

Connection orientation:

1: rear
2: front
3: right
4: left

Converter version:

a: without
b: -
c: placed separately
d: cabinet

Fieldbus system:

a: without
b: Profinet
c: Ethernet/IP
d: Profibus
e: Devicenet