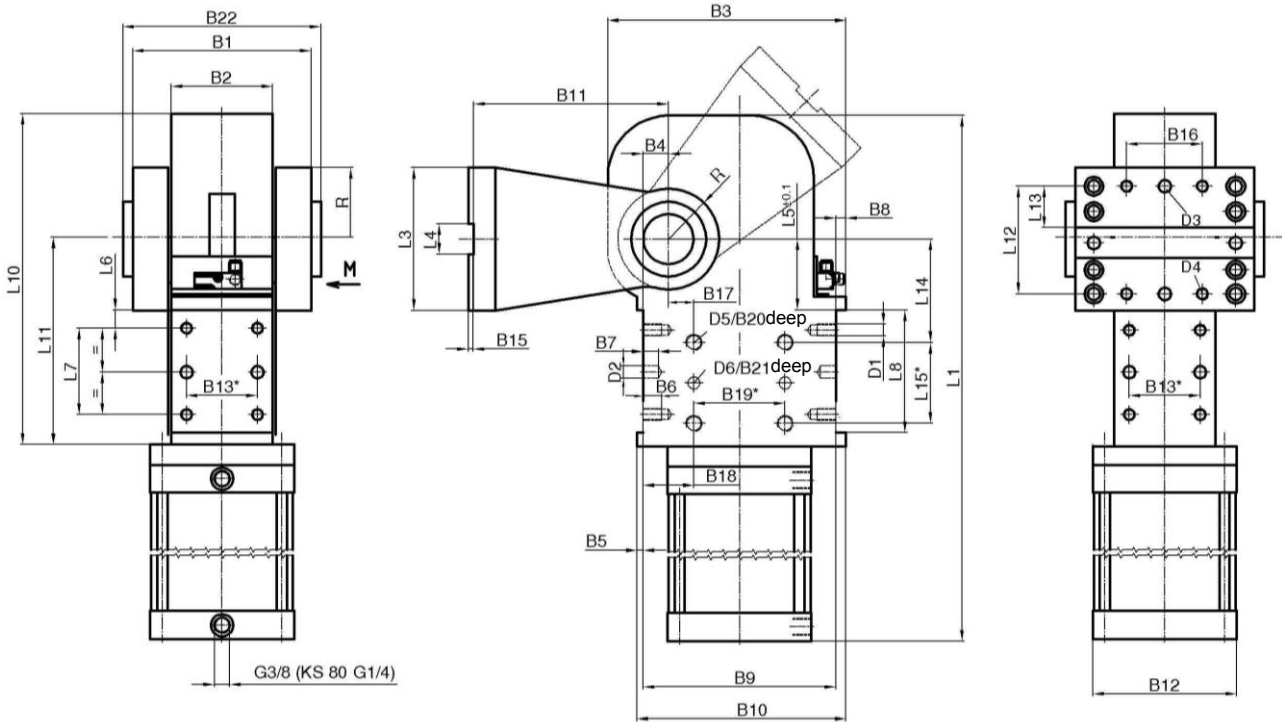


Swivel unit

Totally enclosed, self-locking type

KS... .2 A10



Ordering example:

KS 125.2 S A10 F LH T12 75°

KS: Type
 125.2: Piston Ø
 A10: Swivel arm version
 F: Locking plate with groove and key
 LH: Rear air connection (standard)
 T12: Sensing system
 75°: Opening angle

Ordering example Tünkers sensing systems:

...T00 Without sensing system
 ...T12 Inductive sensor 24 V, 1 output with integrated LED's

Opening angles:

Type KS... .2: max. 120° (opening angle 135° on request)
 Type KS2... .2: max. 70°

Air connection:

LH Rear air connection
 LV Front air connection
 LR Right air connection
 LL Left air connection

Size KS 80 only LH + LV!

Attachment on both sides.

Horizontal mounting

Cylinder cushioned on both sides

**For the torque curve for the angle of tilt see separate data sheet.

Torque caused by load = mass of swivel traverse complete x throat depth

Attention:

Directional flow valves must be installed.

Please send the application for approval.

*Tolerance for dowel holes ± 0,02, for threaded holes ± 0,1.

Medium: Air, max. 6 bar, operation permitted with oil-free air.

Type	**Torque caused by load ML max. 0°-120°	Torques by horizontal forces MQ max.	Rotating time at 120° opening angle	PistonØ (mm)	Cylinder: R = round F = flat	Weight ~ (kg)	B1	B2 ±0,1	B3	B4	B5	B6	B7	B8	B9 ±0,1
KS 80.2	90 Nm	360 Nm	3 sec.	80	F	28	145	80	180	20	8	18	12	8	140
KS 100.2	140 Nm	380 Nm	3 sec.	100	R	34									
KS 125.2	250 Nm	1000 Nm	3 sec.	125	R	55									
KS 160.2	410 Nm	1000 Nm	3 sec.	160	R	63	176	100	235	25	10	16	12	10	190
KS 200.2	650 Nm	1000 Nm	4 sec.	200	R	70									

Type	B10	B11	B12	B13*	B14	B15	B16	B17 ±0,05	B18 ±0,1	B19*	B20	B21	B22	D1	D2 H7	D3 H7	D4
KS 80.2	156	165	140x62	50	-	5	50	10	30	85	16	10	155/175	M12	10	8	M8
KS 100.2			114														
KS 125.2	210	205	142	70	-	5	80	20	45	100	16	12	181/206	M16	12	12	M16
KS 160.2			177														
KS 200.2			218														

Type	D5	D6 H7	L1 ~	L2	L3	L4 +0,1	L5 ±0,1	L6 ±0,1	L7 ±0,1	L8 +0,1	L9	L10 ~	L11 ±0,02	L12*	L13 ±0,1	L14 ±0,05	L15*	R
KS 80.2	M16	12	600	-	110	20	50	15	50	80	-	280	178	80	30	85	60	52,5
KS 100.2			598															52,5
KS 125.2	M16	12	723	-	178	30	50	20	100	140	-	327	205	150	60	90	90	72,5
KS 160.2			739															72,5
KS 200.2			744															72,5