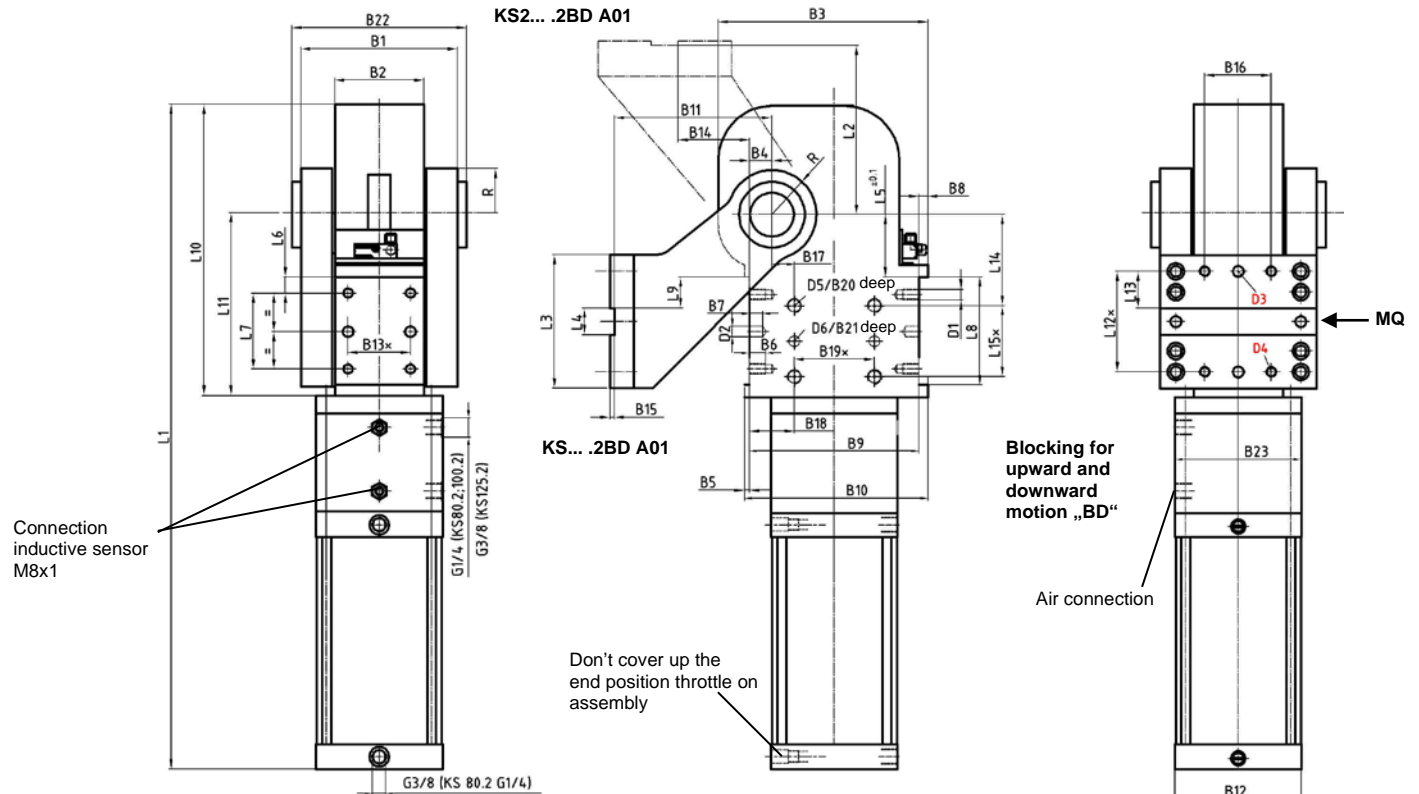


Swivel Unit

Totally enclosed, standard arm
Blocking system, self-locking type

KS... .2 BD



Ordering example:

KS 100.2 BD S A01 F LH T12 75°

KS 100.2: Type
 BD: Blocking system (standard)
 SG: Prepared for external stop
 S: External Stop (incl. SG)
 A01: Swivel arm version
 F: Locking plate with groove and key
 LH: Rear air connection (standard)
 T12: Sensing system
 75°: Opening angle

Ordering example Tünkers sensing systems:

... T00 Without sensing system
 ... T12 Inductive sensor 24 V, 1 output with integrated LED's

Attention!

Blocking system must be under 6 bar pressure.

Ordering example swivel arms:

... A00 Without swivel arm
 ... A01 Standard swivel arm
 ... A03 Mirrored swivel arm A01

Sensor position blocking system BD:

BD: Sensor on rear side (standard)
 BD-L: Sensor left
 BD-R: Sensor right
 BD-V: Sensor front (only KS 80/KS 100)

Air connections:

LH Rear air connection
 LV Front air connection
 LR Right air connection
 LL Left air connection

Size KS 80 only LH + LV!

Opening angles:

KS... .2 BD A01/A03 max. 120°
 (opening angle 135° on request)
 KS2... .2 BD A01 max. 105°
 KS2... .2 BD A03 max. 60°

Please send the application for approval.

Attention!

Directional flow valves must be installed.

Attachment on both sides.

Horizontal mounting

Cylinder cushioned on both sides.

Torque caused by load = mass of swivel traverse complete x throat depth

For the torque curve for the angle of tilt see separate data sheet.

*Tolerance for dowel holes ± 0.02, for threaded holes ± 0,1.

Medium: Air, max. 6 bar, operation permitted with oil-free air.

Type	**Torque caused by load ML max. 0°-120°	Torques by horizontal forces MQ max.	Rotating time at 120° opening angle	Piston Ø (mm)	Cylinder R = round F = flat	Weight (kg)	B1	B2 ±0,1	B3	B4	B5	B6	B7	B8	B9 ±0,1
KS 80.2 BD (F)*	90 Nm	360 Nm	3 sec.	80	F	38	145	80	180	20	8	18	12	8	140
KS 100.2 BD (R)*	140 Nm	380 Nm	3 sec.	100	R	42									
KS 125.2 BD (R)*	250 Nm	1000 Nm	3 sec.	125	R	75									
KS 160.2 BD (R)*	410 Nm	1000 Nm	3 sec.	160	R	102	176	100	235	25	10	16	12	10	190
KS 200.2 BD (R)*	650 Nm	1000 Nm	4 sec.	200	R	120									

Type	B10	B11	B12	B13*	B14	B15	B16	B17 ±0,05	B18 ±0,1	B19*	B20	B21	B22	B23	D1	D2 H7	D3 H7
KS 80.2 BD (F)*	156	155	140x62	50	55	5	60	10	30	85	16	10	155/175	114	M12	10	10
KS 100.2 BD (R)*			110											114			
KS 125.2 BD (R)*	210	190	140	70	80	5	80	20	45	100	16	12	181/206	142	M16	12	12
KS 160.2 BD (R)*			180											177			
KS 200.2 BD (R)*			220											177			

Type	D4	D5	D6 H7	L1 (max. 135°)	L2	L3	L4 +0,1	L5 ±0,1	L6 ±0,1	L7 ±0,1	L8 +0,1	L9	L10 ~	L11 ±0,02	L12 *	L13 ±0,1	L14 ±0,05	L15*	R
KS 80.2 BD (F)*	M12			760	155	110		50	15	50	80	25	280	178	90	30	85	60	52,5
KS 100.2 BD (R)*				758															52,5
KS 125.2 BD (R)*	M16	M16	12	939	190	150	30	50	20	100	140	55	327	205	120	45	90	90	72,5
KS 160.2 BD (R)*				985															72,5
KS 200.2 BD (R)*				990															72,5