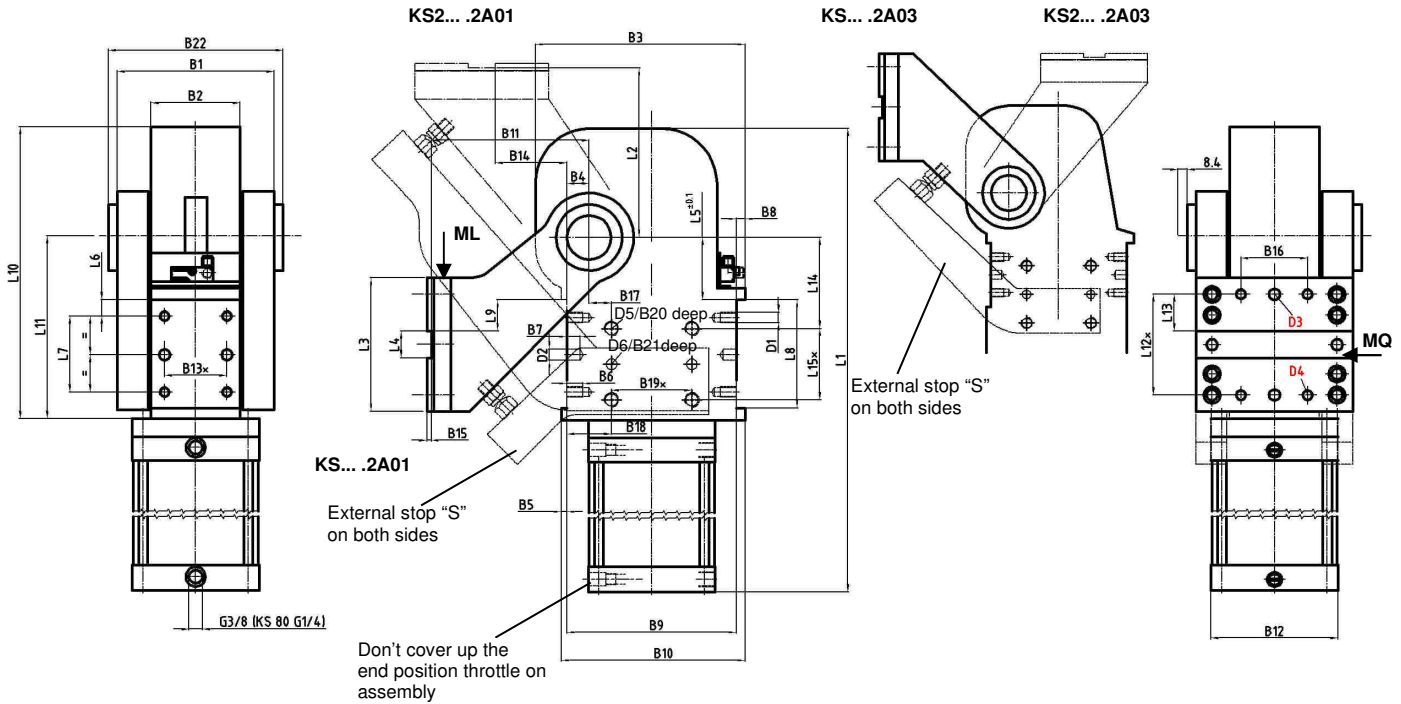


# Swivel unit

Totally enclosed, self-locking type, integrated end-position cushioning

# KS... .2



**Ordering example:**

KS 125.2 S A01 F LH T12 75°

- KS: Type
- 125.2: Piston Ø
- SG: Prepared for external stop
- S: External Stop (incl. SG)
- A01: Swivel arm version
- F: Locking plate with groove and key
- LH: Rear air connection (standard)
- T12: Sensing system
- 75°: Opening angle

**Ordering example Tünkers sensing systems:**

- ...T00 Without sensing system
- ...T12 Inductive sensor 24 V, 1 output with integrated LED's

**Ordering example swivel arms:**

- ...A00 Without arm
- ...A01 Standard arm
- ...A03 Mirrored standard arm A01
- ...A10 Symmetrical swivel arm
- Version 2: Opening angle max.70° (see data sheet KSD...)

External stop „S“ not for arm version A10.

**Opening angles:**

- Type KS... .2 A01/A03: max. 120° (opening angle 135° on request)
- Type KS2... .2 A01: max. 105°
- Type KS2... .2 A03: max. 60°

**Air connection:**

- LH Rear air connection
- LV Front air connection
- LR Right air connection
- LL Left air connection

Size KS 80 only LH + LV!

Attachment on both sides.

Horizontal mounting

Cylinder cushioned on both sides

\*\*For the torque curve for the angle of tilt see separate data sheet.

Torque caused by load = mass of swivel traverse complete x throat depth

**Attention:**

Directional flow valves must be installed.

**Please send the application for approval.**

\*Tolerance for dowel holes ± 0,02, for threaded holes ± 0,1.

Medium: Air, max. 6 bar, operation permitted with oil-free air.

Type	**Torque caused by load ML max. 0°-120°	Torques by horizontal forces MQ max.	Rotating time at 120° opening angle	Piston-Ø (mm)	Cylinder R = round F = flat	Weight ~ (kg)	B1	B2 ±0,1	B3	B4	B5	B6	B7	B8	B9 ±0,1
KS 80.2	90 Nm	360 Nm	3 sec.	80	F	30	145	80	180	20	8	18	12	8	140
KS 100.2	140 Nm	380 Nm	3 sec.	100	R	35	176	100	235	25	10	16	12	10	190
KS 125.2	250 Nm	1000 Nm	3 sec.	125	R	65									
KS 160.2	410 Nm	1000 Nm	3 sec.	160	R	75									
KS 200.2	650 Nm	1000 Nm	4 sec.	200	R	85									

Type	B10	B11	B12	B13*	B14	B15	B16 ±0,1	B17 ±0,05	B18 ±0,1	B19*	B20	B21	B22	D1	D2 H7	D3 H7	D4
KS 80.2	156	155	140x62	50	55	5	60	10	30	85	16	10	155/175	M12	10	10	M12
KS 100.2			110														
KS 125.2	210	190	140	70	80	5	80	20	45	100	16	12	186/206	M16	12	12	M16
KS 160.2			180														
KS 200.2			220														

Type	D5	D6 H7	L1 (max. 135°)	L2	L3	L4 +0,1	L5 ±0,1	L6 ±0,1	L7 ±0,1	L8 +0,1	L9	L10 ~	L11 ±0,02	L12* ±0,1	L13 ±0,1	L14 ±0,05	L15*	R
KS 80.2	M16	12	600	155	110	30	50	15	50	80	25	280	178	90	30	85	60	52,5
KS 100.2			598															52,5
KS 125.2			723															72,5
KS 160.2	M16	12	739	190	150	30	50	20	100	140	55	327	205	120	45	90	90	72,5
KS 200.2			744															72,5