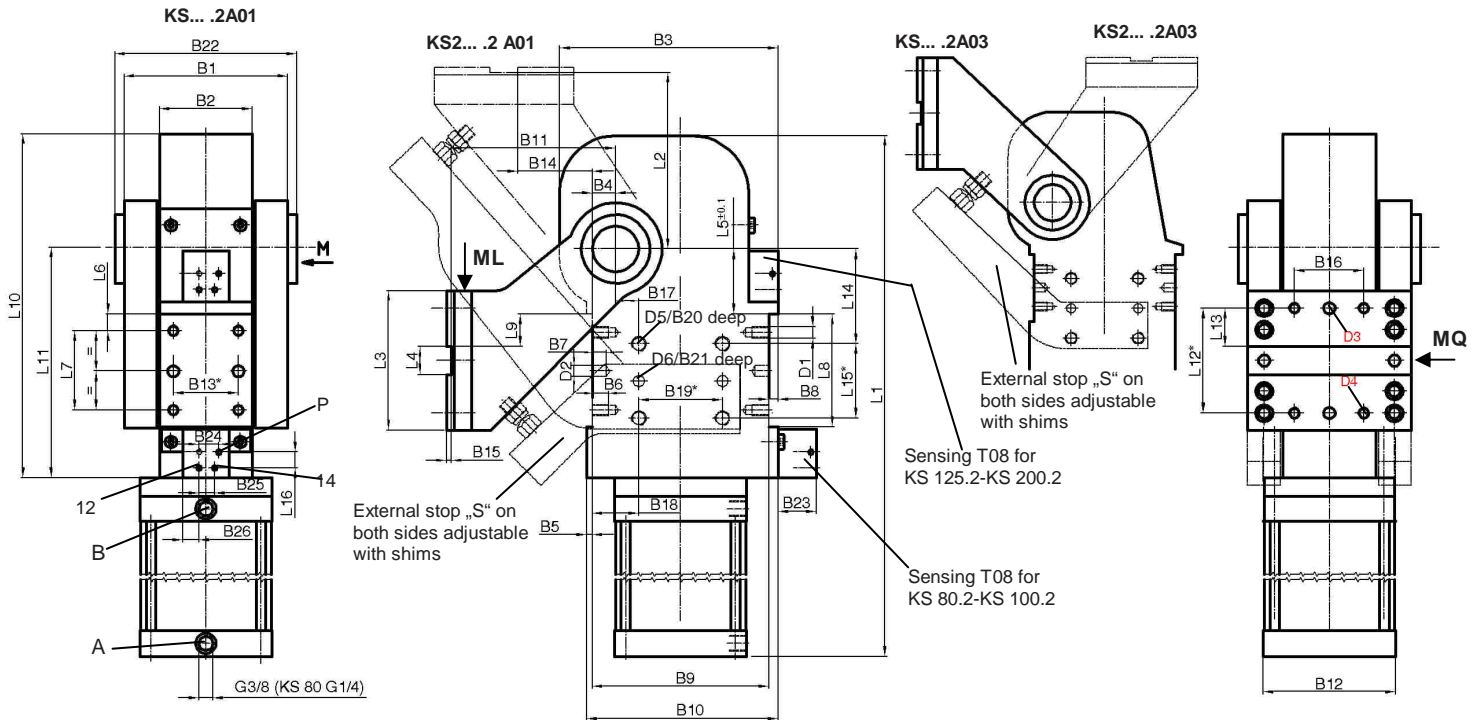


# Swivel unit

Compact design, self-locking type, pneumatic sensing

# KS... .2 T08



### Ordering example

KS 125.2 S A01 F LH T08 75°

KS:	Type
125.2:	Piston Ø
SG:	Prepared for external stop
S:	External stop (incl. SG)
A01:	Swivel arm version
F:	Locking plate with groove and key
LH:	Rear air connection (standard)
T08:	Pneumatic sensing 75° Opening angle

### Ordering example Tünkers sensing systems:

...T00	Without sensing
...T08	Pneumatic sensing

### Ordering example swivel arms:

...A00:	Without arm
...A01:	Standard arm
...A03:	Mirrored standard arm A01
...A10:	Symmetrical arm, see data sheet KSD... (for KS2 max. 70° opening angle)

External stop "S" not for arm version A10.

### Standard opening angles:

Typ KS... .2 A01/A03	max. 120°
(Opening angle 135° on request)	
Typ KS2... .2 A01	max. 105°
Typ KS2... .2 A03	max. 60°

### Air connection:

LH	Rear air connection
LV	Front air connection
LR	Right air connection
LL	Left air connection

Size KS 80 only LH + LV!

### Connections pneumatic sensing T08:

A:	tension
B:	release tension
P:	pressure connection for sensing
14:	control system A
12:	control system B

**Attention:** External throttle check valves must be provided on assembly.

Attachment on both sides.

Cylinder cushioned on both sides.

\*\*For the torque curve for the angle of tilt see separate data sheet.

Horizontal mounting.

\*Tolerance for dowel holes ± 0,02, for threaded holes ± 0,1.

Type	**Torque caused by load ML max. 0°-120°	Torques by horizontal forces MQ max.	Rotating time at 120° opening angle	Piston Ø (mm)	Cylinder: R = round F = flat	Weight ~ (kg)	B1	B2 ±0,1	B3	B4	B5	B6	B7	B8	B9 ±0,1
KS 80.2	90 Nm	360 Nm	3 sec.	80	F	30	145	80	180	20	8	18	12	8	140
KS 100.2	140 Nm	380 Nm	3 sec.	100	R	35	176	100	235	25	10	16	12	10	190
KS 125.2	250 Nm	1000 Nm	3 sec.	125	R	65									
KS 160.2	410 Nm	1000 Nm	3 sec.	160	R	75									
KS 200.2	650 Nm	1000 Nm	4 sec.	200	R	85									

Type	B10	B11	B12	B13 *	B14	B15	B16	B17 ±0,05	B18 ±0,1	B19 *	B20	B21	B22	B23	B24 *	B25 *	B26	D1	D2 H7	D3 H7	D4
KS 80.2			140x62	50	55	5	60	10	30	85	16	10	155/175	40	12	10	14	M12	10	10	M12
KS 100.2	156	155	114																		
KS 125.2			142																		
KS 160.2			177	70	80	5	80	20	45	100	16	12	181/206	40	12	10	14	M16	12	12	M16
KS 200.2	210	190	218																		

Type	D5	D6 H7	L1 (max. 135)	L2	L3	L4 ±0,1	L5 ±0,1	L6 ±0,1	L7 ±0,1	L8 ±0,1	L9	L10 ~	L11 ±0,02	L12*	L13 ±0,1	L14 ±0,05	L15 *	L16*
KS 80.2			600	155	110	30	50	15	50	80	25	280	178	90	30	85	60	10
KS 100.2			598															
KS 125.2			723	190	150	30	50	20	100	140	55	327	205	120	45	90	90	10
KS 160.2	M16	12	739															
KS 200.2			744															