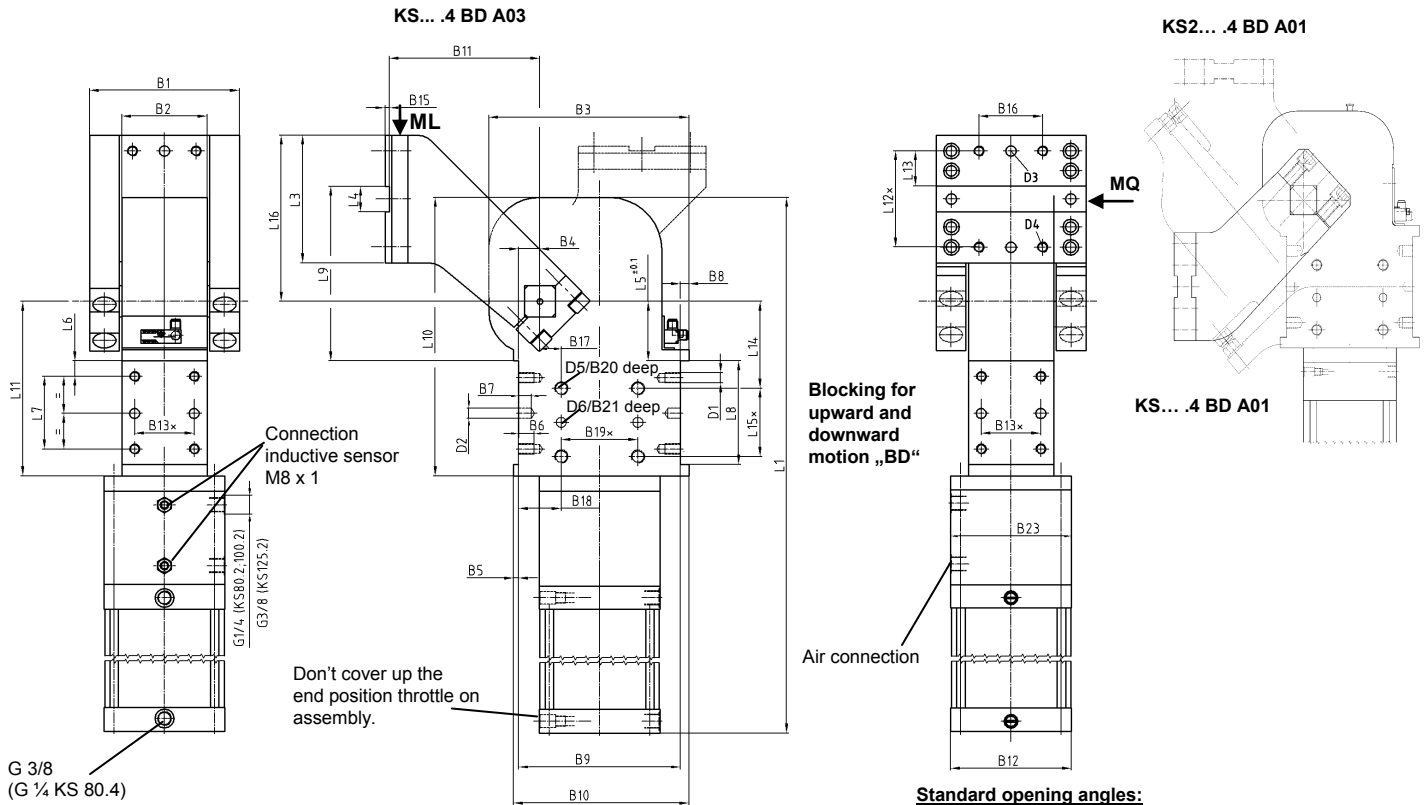


Swivel unit

Blocking system, self-locking type

KS... .4 BD



Ordering example:

KS 100.4 BD S A03 LH T 12 90°

KS 100.4: Type
 BD: Blocking system (standard)
 SG: Prepared for external stop
 S: External Stop (incl. SG)
 A03: Swivel arm version
 LH: Rear air connection (standard)
 T12: Sensing system
 90: Opening angle

Ordering example Tünkens sensing systems:

...T00 Without sensing
 ...T12 Inductive sensor 24 V, 1 output with integrated LED's

Attention:

Blocking system must be under 6 bar pressure.

Ordering example swivel arms:

... A00 Without swivel arm
 ... A01 Standard swivel arm
 ... A03 Mirrored swivel arm A01

Sensor position blocking system BD:

BD: Sensor on rear side (standard)
 BD-L: Sensor left
 BD-R: Sensor right
 BD-V: Sensor front (only KS 80/KS 100)

Air connections:

LH Rear air connection
 LV Front air connection
 LR Right air connection
 LL Left air connection

Size KS 80 only LH + LV!

Standard opening angles:

Type KS... .4 BD A01/A03 max. 120° (opening angle 135° on request)
 Type KS2... .4 BD A01 max. 105°
 Type KS2... .4 BD A03 max. 60°

Please send the application for approval.

Attention:

Directional flow valves must be installed.

Attachment on both sides.

Horizontal mounting

Cylinder cushioned on both sides.

**For the torque curve for the angle of tilt see separate data sheet.

Torque caused by load = mass of swivel traverse complete x throat depth

* Tolerance for dowel holes ± 0.02, for threaded holes ± 0.1.

Medium: Air, max. 6 bar, operation permitted with oil-free air.

Type	**Torque caused by load ML max. 0°-120°	Torques by horizontal forces MQ max.	Piston Ø (mm)	Weight ~ (kg)	B1	B2 ±0,1	B3	B4	B5	B6	B7	B8	B9 ±0,1
KS 80.4 BD (F)*	90 Nm	360 Nm	80	38	145	80	180	20	8	18	12	8	140
KS 100.4 BD (R)*	140 Nm	380 Nm	100	42									
KS 125.4 BD (R)*	250 Nm	1000 Nm	125	80									
KS 160.4 BD (R)*	410 Nm	1000 Nm	160	100	176	100	235	25	10	16	12	10	190
KS 200.4 BD (R)*	650 Nm	1000 Nm	200	110									

Type	B10	B11	B12	B13*	B14	B15	B16	B17 ±0,05	B18 ±0,1	B19*	B20	B21	B22	B23	D1	D2 H7	D3 H7
KS 80.4 BD (F)*	156	155	140x62	50	-	5	60	10	30	85	16	10	-	114	M12	10	10
KS 100.4 BD (R)*			110											114			
KS 125.4 BD (R)*			140											142			
KS 160.4 BD (R)*	210	190	180	70	-	5	80	20	45	100	16	12	-	177	M16	12	12
KS 200.4 BD (R)*			220											177			

Type	D4	D5	D6 H7	L1 (max. 135°)	L2	L3	L4 +0,1	L5 ±0,1	L6 ±0,1	L7 ±0,1	L8 +0,1	L9	L10 ~	L11 ±0,02	L12*	L13 ±0,1	L14 ±0,05	L15*	L16
KS 80.4 BD (F)*	M12	M16	12	760	-	110	30	50	15	50	80	155	280	178	90	30	85	60	145
KS 100.4 BD (R)*				758															
KS 125.4 BD (R)*				939															
KS 160.4 BD (R)*	M16	M16	12	985	-	150	30	50	20	100	140	185	327	205	120	45	90	90	195
KS 200.4 BD (R)*				990															