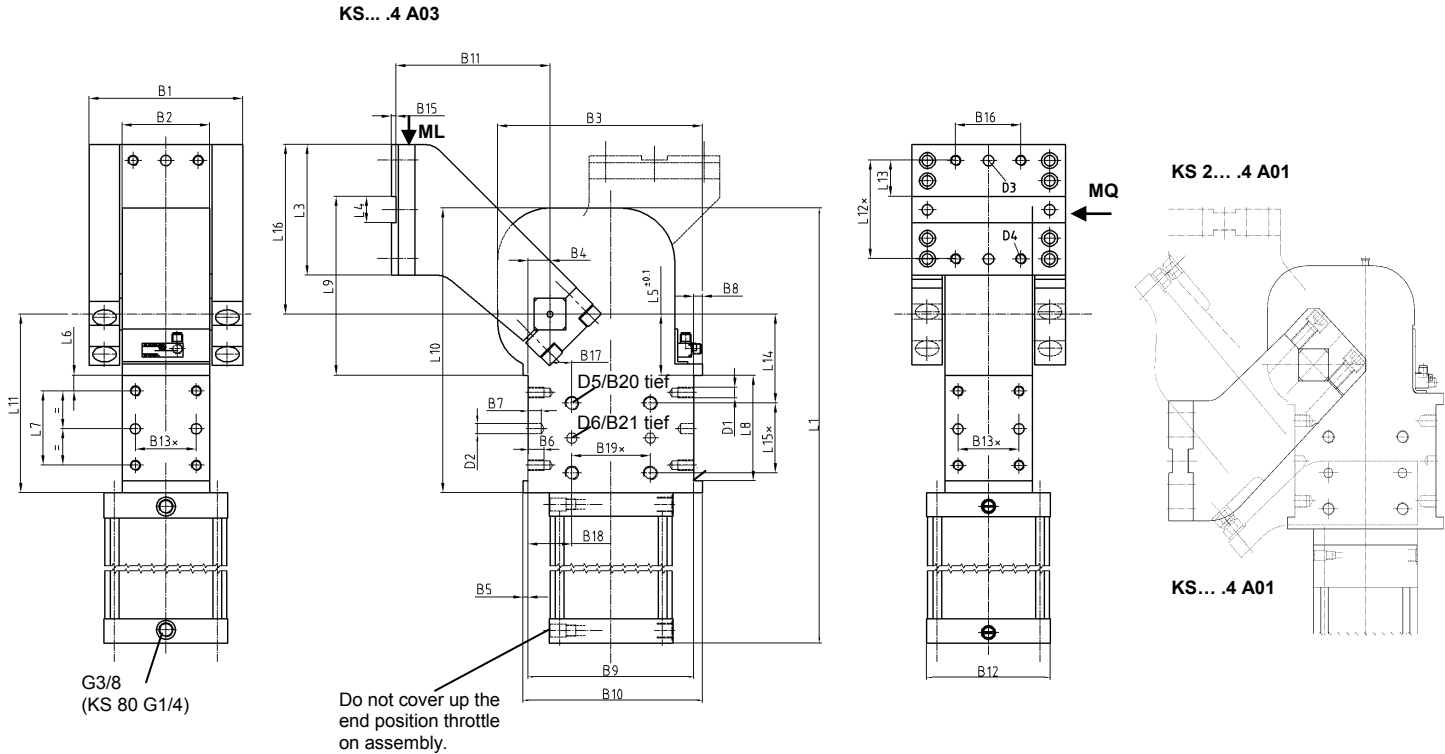


Swivel unit

Compact design, self-locking type

KS... .4



Ordering example

KS 125.4 S A03 LH T12 90°

- KS: Type
- 125.4: Piston Ø
- SG: Prepared for external stop
- S: External stop (incl. SG)
- A03: Swivel arm version
- LH: Rear air connection (standard)
- T12: Sensing system
- 90°: Opening angle

Ordering example Tünkers sensing systems:

- ...T00 Without sensing
- ...T12 Inductive sensor 24 V, 1 output with integrated LED's

Ordering example swivel arms:

- ...A00 Without swivel arm
- ...A01 Standard swivel arm
- ...A03 Mirrored swivel arm A01

Standard opening angles:

- Type KS... .4 A01/A03 max. 120° (Opening angle 135° on request)
- Type KS2... .4 A01 max. 105°
- Type KS2... .4 A03 max. 60°

Air connection:

- LH Rear air connection
- LV Front air connection
- LR Right air connection
- LL Left air connection

Size KS 80 only LH + LV!

Attachment on both sides.

Horizontal mounting.

Cylinder cushioned on both sides

**For the torque curve for the angle of tilt see separate data sheet.

Torque caused by load = mass of swivel traverse complete x distance of load center

Attention:

External throttle check valves must be provided on assembly.

Please send the installation situation for approval.

*Tolerance for dowel holes ± 0,02, for threaded holes ± 0,1.

Medium: Air, max. 6 bar, operation permitted with oil-free air.

Type	**Torque caused by load ML max. 0°-120°	Torques by horizontal forces MQ max.	Rotating time at 120° opening angle	Piston Ø (mm)	Cylinder: R = round F = flat	Weight ~ (kg)	B1	B2 ±0,1	B3	B4	B5	B6	B7	B8
KS 80.4	90 Nm	360 Nm	3 sec.	80	F	30	145	80	180	20	8	18	12	8
KS 100.4	140 Nm	380 Nm	3 sec.	100	R	35								
KS 125.4	250 Nm	1000 Nm	3 sec.	125	R	65								
KS 160.4	410 Nm	1000 Nm	3 sec.	160	R	75	176	100	235	25	10	16	12	10
KS 200.4	650 Nm	1000 Nm	4 sec.	200	R	85								

Type	B9 ±0,1	B10	B11	B12	B13*	B15	B16 ±0,1	B17 ±0,05	B18 ±0,1	B19*	B20	B21	D1	D2 H7	D3 H7	D4
KS 80.4	140	156	155	140x62	50	5	60	10	30	85	16	10	M12	10	10	M12
KS 100.4				110												
KS 125.4				140												
KS 160.4	190	210	190	180	70	5	80	20	45	100	16	12	M16	12	12	M16
KS 200.4				220												

Type	D5	D6 H7	L1 (max. 135°)	L3	L4 ±0,1	L5 ±0,1	L6 ±0,1	L7 ±0,1	L8 +0,1	L9	L10 ~	L11 ±0,02	L12* ±0,1	L13 ±0,1	L14 ±0,05	L15*	L16
KS 80.4	M16	12	600	110	30	50	15	50	80	155	280	178	90	30	85	60	145
KS 100.4			598														145
KS 125.4			723														195
KS 160.4			739	195													
KS 200.4			744	195													