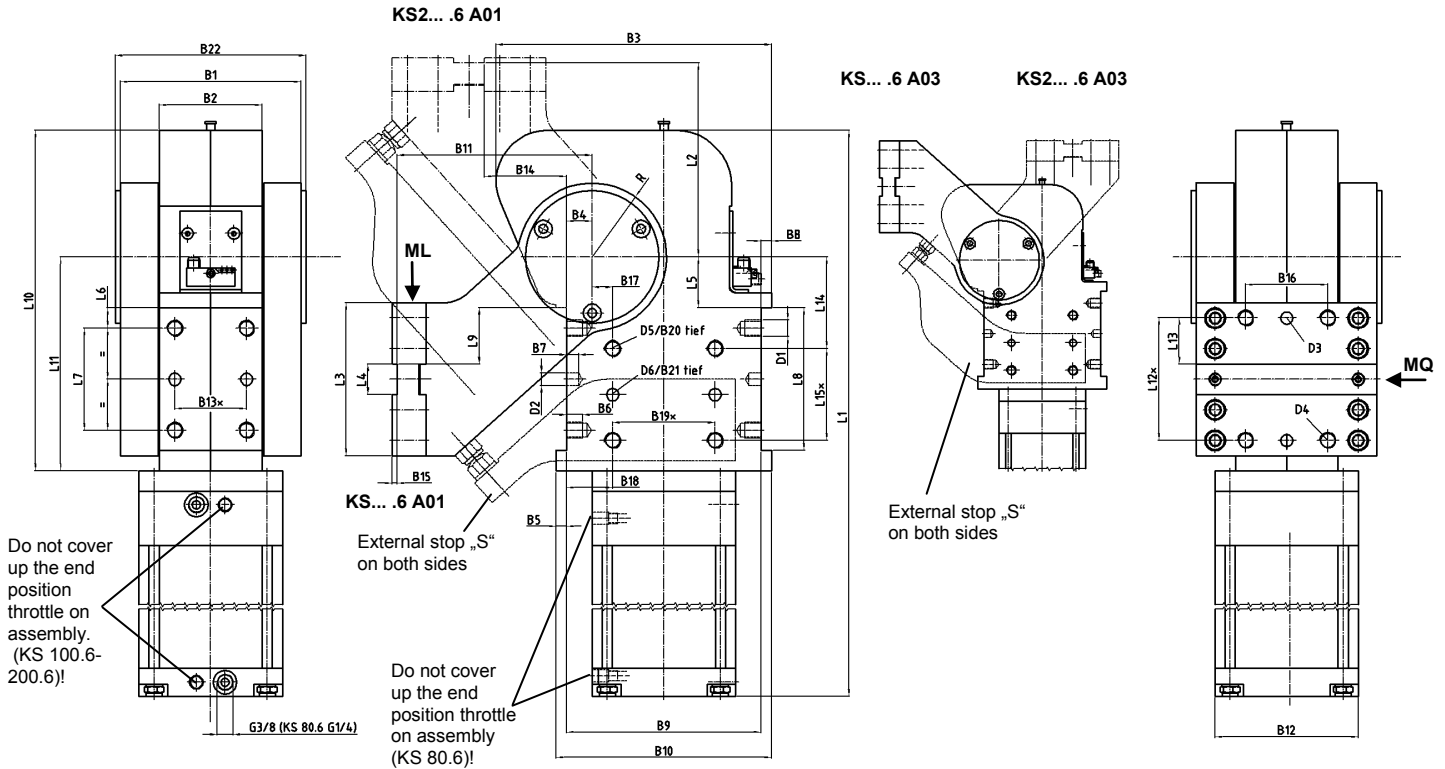


Swivel unit

Totally enclosed, self-locking type, with optimized torque

KS... .6



Ordering example:

KS 125.6 S A01 F LH T12 75°

KS: Type
 125.6: Piston Ø
 SG: Prepared for external stop
 S: External Stop (incl. SG)
 A01: Swivel arm version
 F: Locking plate with groove and key
 LH: Rear air connection (standard)
 T12: Abfragesystem
 75°: Öffnungswinkel

Ordering example Tünkers sensing systems:

...T00 Without sensing system
 ...T12 Inductive sensor 24 V, 1 output with integrated LED's

Ordering example swivel arms:

...A00 Without arm
 ...A01 Standard arm
 ...A03 Mirrored standard arm A01
 ...A10 Symmetrical swivel arm
 Version 2: Opening angle max.70° (see data sheet KSD...)

External stop „S“ not for arm version A10.

Standard opening angles:

Type KS... .6 A01/A03: max. 135°
 Type KS2... .6 A01: max. 105°
 Type KS2... .6 A03: max. 60°

Air connections:

LH Rear air connection
 LV Front air connection
 LR Right air connection
 LL Left air connection

Size KS 80 only LH + LV!

Attention:

Directional flow valves must be installed.

Please send the application for approval.

Cylinder cushioned on both sides

**For the torque curve for the angle of tilt see separate data sheet.

Torque caused by load = mass of swivel traverse complete x throat depth

*Tolerance for dowel holes ± 0,02, for threaded holes ± 0,1.

Medium: Air, max. 6 bar, operation permitted with oil-free air.

Type	**Torque caused by load ML max. 0°-120°	Torques by horizontal forces MQ max.	Rotating time at 135° opening angle	Piston Ø (mm)	Cylinder: R = round F = flat	Weight ~ (kg)	B1	B2 ±0,1	B3	B4	B5	B6	B7	B8	B9 ±0,1
KS 80.6	90 Nm	360 Nm	3,3 sec.	80	F	31	145	80	210	20	8	18	12	8	140
KS 100.6	140 Nm	380 Nm	3,3 sec.	100	R	36	176	100	269	25	10	16	12	10	190
KS 125.6	250 Nm	1000 Nm	3,3 sec.	125	R	67									
KS 160.6	410 Nm	1000 Nm	3,3 sec.	160	R	77									
KS 200.6	650 Nm	1000 Nm	4,3 sec.	200	R	87									

Type	B10	B11	B12	B13*	B14	B15	B16	B17 ±0,05	B18 ±0,1	B19*	B20	B21	B22	D1	D2 H7	D3 H7	D4
KS 80.6	156	155	140x62	50	55	5	60	10	30	85	18	10	155/175	M12	10	10	M12
KS 100.6			110														
KS 125.6	210	190	140	70	80	5	80	20	45	100	16	12	181/206	M16	12	12	M16
KS 160.6			180														
KS 200.6			220														

Type	D5	D6 H7	L1 (max. 135°)	L2	L3	L4 ±0,1	L5 ±0,1	L6 ±0,1	L7 ±0,1	L8 +0,1	L9	L10 ~	L11 ±0,02	L12*	L13 ±0,1	L14 ±0,05	L15*	R
KS 80.6	M16	12	605	155	110	30	50	15	50	80	25	284,5	182,5	90	30	85	60	52,5
KS 100.6			603															
KS 125.6			732															
KS 160.6	M16	12	748	190	150	30	50	20	100	140	55	334	210	120	45	90	90	72,5
KS 200.6			753															