

Swivel Unit

Spare Parts List (week 04/2017- 31/2018)

KS/KS2 100.6

Spare Parts

Pos.	Part no.	Quantity	Description	Type	Flag ¹
1_10	279820	1	housing complete	KS 80.6 - KS 100.6	
1_20	294955	1	cylinder head	KS 100.2 BR2	
1_30	1254732	1	cylinder bottom	KS 100 BR3	
1_40	274417	1	fork piece complete	KS 80.5 - KS 100.5	
1_50	226387	1	piston rod	KS 100.1	
1_60	461909	1	piston	KS 100 BR3	
1_70	226391	1	cylinder receiver	KS 100.1	
1_80	353829	1	strap complete	KS 100.6	R
1_90	209909	1	bolt	PFS 200	R
1_100	209910	1	bolt	PFS 200	R
1_110	226363	1	drive shaft	KS 80.2	R
1_120	223924	1	slide	KSD 63	
1_130	231981	2	supporting roller complete	KS 80 - KS 100	R
1_140	220184	2	needle bush complete	KS 80	R
1_150	211430	4	axial washer	Ø45xØ65x1	R
1_160	211429	2	axial needle ring	Ø45xØ65x3	R
1_170	237054	2	supporting plate	KS 80.2	R
1_180	226364	1	brake sleeve	KS 80.1 - KS 100.1	
1_190	234582	1	brake sleeve	KS 80.2	
1_200	295987	2	throttle screw	G1/4 - type B	
1_210	212563	1	scraper	Ø30xØ38x7x4	RD
1_220	212588	1	rod seal	Ø30xØ39x2.8	RD
1_230	230909	1	cushion ring	Ø30.6xØ40x6	RD
1_235	230910	1	cushion ring	Ø36.6xØ46x6	RD
1_240	463390	2	piston seal	88x99x8.5	RD
1_250	211460	4	expander sealing plug	MB 700-050	
1_260	201702	1	o-ring	Ø20x3	RD
1_270	201905	2	o-ring	Ø100x3	RD
1_280	220220	1	driving band	15 x 2.5 x 100 mm	RD
1_290	1189934	1	driving band	8 x 2.5 x 310 mm	RD
1_300	240351	1	shim ring	45x65x0.1 DIN 988	
1_310	253082	1	shim ring	45x65x0.05 DIN 988	
1_320	200618	2	set screw	M5 x 10 DIN 915	R
1_330	245673	2	cap screw	M6 x 12 DIN 6912	R
1_340	200221	4	cap screw	M8x25 DIN 912	
1_350	200976	2	lock washer	S 6.0	
1_360	200977	4	lock washer	S 8.0	
2_0	250730	1	swivel traverse complete	KS 80 - KS 100.3 A01-A03	
3_20	200487	2	countersink head screw	M6 x12 DIN 7991	
4_0		1	cylinder pipe, variable	depending on opening angle	
5_0		4	tension rod, variable	depending on opening angle	
6_0	200729	4	hexagon nut	M10 DIN 985	

spare parts sets / accessories

Pos.	Part no.	Quantity	Description	Type	
	1217695	1	repair kit	KS 100.6	
	1216500	1	seal kit	KS 100.2	
3_10	353406	1	limit switch set complete	KS 80.5 - KS 100.5 T12 P+F	

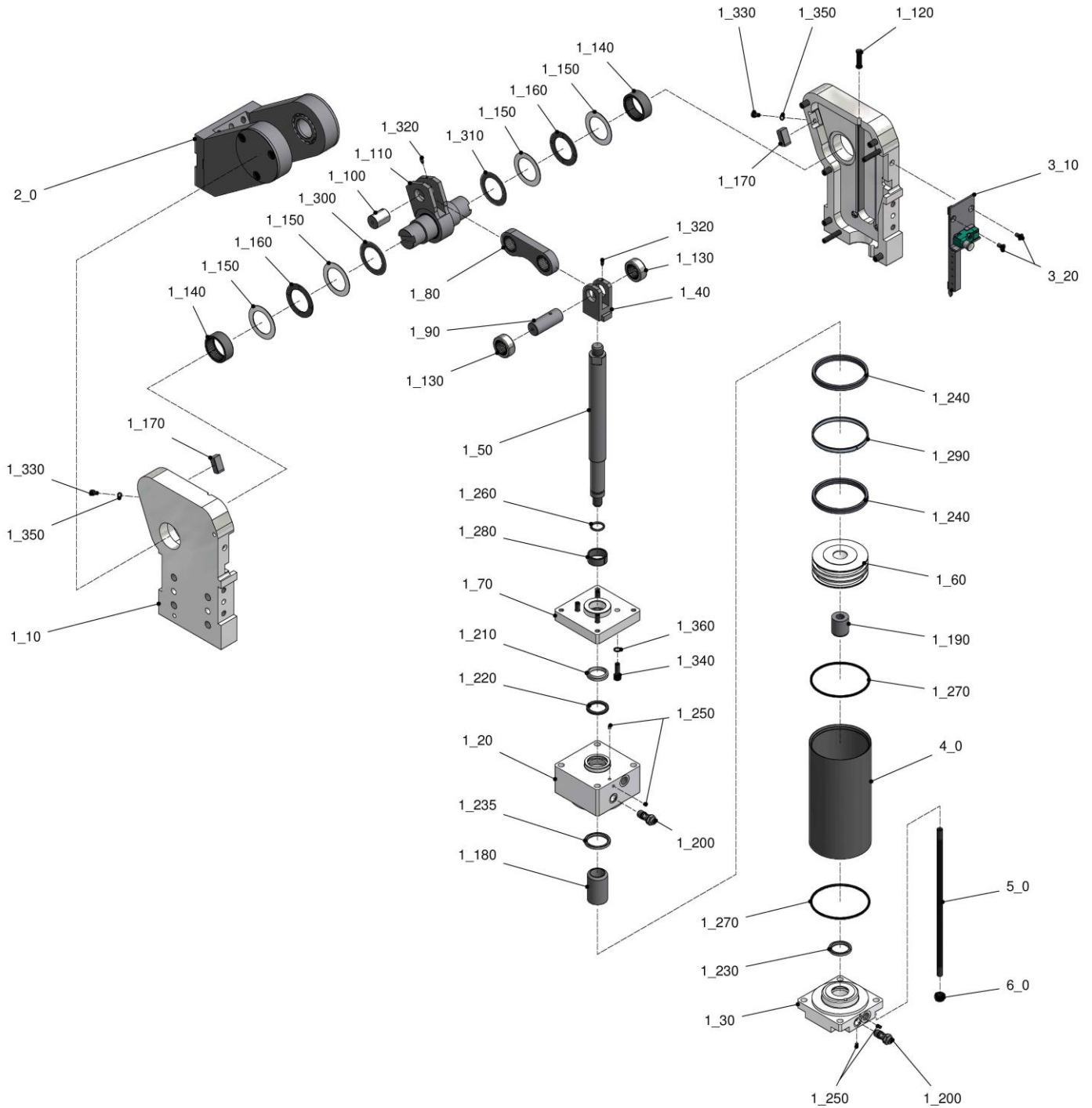
¹ R = included with repair kit, D = included with seal kit



Swivel Unit

Spare Parts Drawing (week 04/2017-31/2018)

KS/KS2 100.6



Subject to technical modifications.

16.10.2019