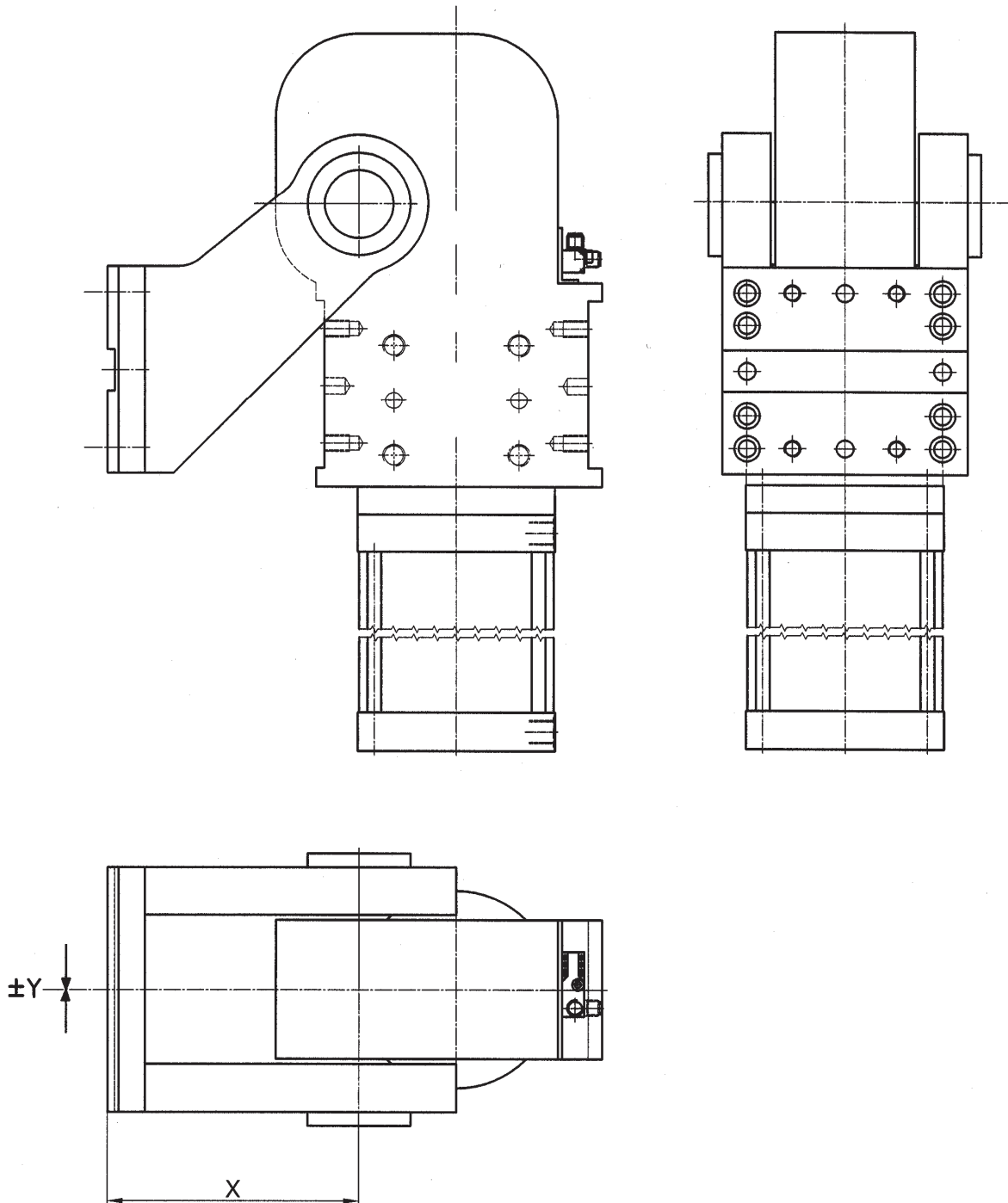


# Tolerance Ranges for Clamp Arms

“Repeatability“  
Swivel unit

KS...



Type	X	Y prior to locking	Y after locking
KS/KS2 80	500	±0.15	±0.05
KS/KS2 100	500	±0.15	±0.05
KS/KS2 125	500	±0.15	±0.05
KS/KS2 160	500	±0.15	±0.05
KS/KS2 200	500	±0.15	±0.05

25/09/2002

Subject to technical changes.

 **TÜNKERS**<sup>®</sup>  
Erfindergeist serienmäßig.

[www.tuenkers.de](http://www.tuenkers.de) ♦ Phone: +49 2102 4517-0