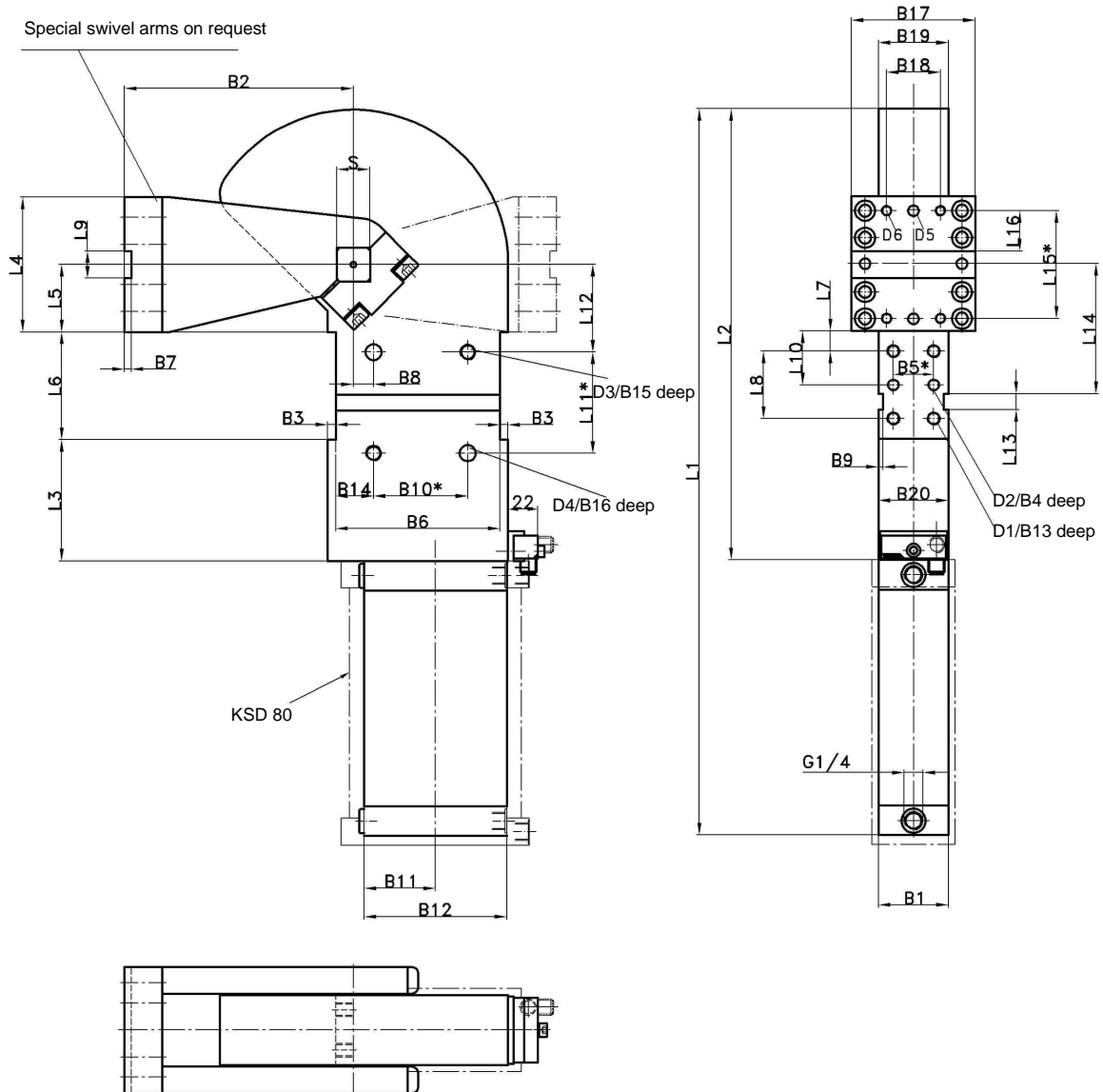


Swivel unit

Rotary drive, swivel range 180°,
flat design

KSD 63, 80



Ordering example:

KSD 63 A10 T12 180°

KSD: Type
63: Piston Ø
A10: Swivel arm version
T12: Sensing system
180°: Opening angle

Attention!

External throttle check valves must be provided on assembly.
They are not included in the scope of delivery.

Integrated end position cushioning.

*Tolerance for dowel holes ± 0.02 , for threaded holes ± 0.1 .

Medium: Air max. 8 bar, operation permitted with oil-free air.

Ordering example Tünkers sensing systems:

...T00 Without sensing
...T12 Inductive sensor 24 V, 1 output
with integrated LED's

Type	**Torque caused by load ML max. at 6 bar	Piston Ø (mm)	Weight ~ (kg)	B1	B2	B3	B4
KSD 63	50 Nm	63	20	52	170	7	12
KSD 80	90 Nm	80	22	62	170	7	12

Type	B5*	B6 $\pm 0,1$	B7	B8 $\pm 0,05$	B9	B10 *	B11	B12	B13	B14 $\pm 0,1$	B15	B16	B17 $\pm 0,1$	B18 $\pm 0,1$	B19	B20	D1	D2 H7	D3	D4 H7	D5 H7	D6
KSD 63	30	126	5	15	3,5	70	53	106	18	28	15	12	102	50	52	54	M8	8	M12	12	8	M8
KSD 80	30	126	5	15	3,5	70	70	140	18	28	15	12	102	50	52	54	M8	8	M12	12	8	M8

Type	L1	L2	L3	L4	L5 $\pm 0,05$	L6 $\pm 0,1$	L7 $\pm 0,1$	L8 $\pm 0,2$	L9 $\pm 0,1$	L10 $\pm 0,05$	L11*	L12 $\pm 0,05$	L13 N9	L14	L15*	L16 $\pm 0,1$	S h9
KSD 63	680	340	90	100	50	80	15	50	20	40	75	65	12	96,5	80	30	27
KSD 80	730	340	90	100	50	80	15	50	20	40	75	65	12	96,5	80	30	27

