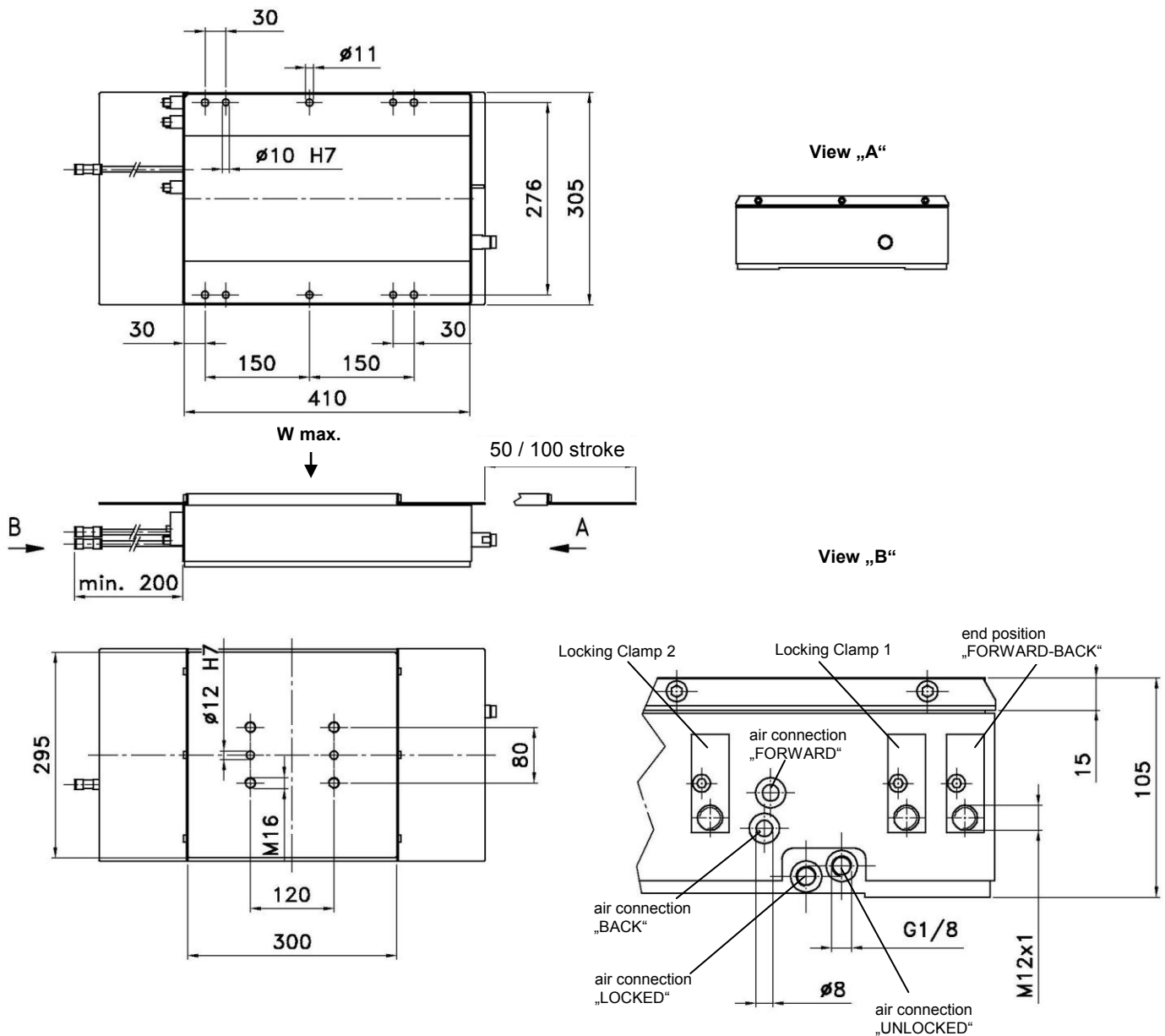


# Linear Unit

50 / 100 stroke, with double-sided end position lock,  
with shock absorbers, optionally with protective housing

## LE 100.1



### Ordering example:

LE 100.1-100 SB T02

LE 100.1: Type  
100: Stroke  
SB: Option: Protective housing  
T02: Sensing system

### Technical data shock absorber:

Impact velocity range 0.15-0.22 m/s  
Max. energy consumption per stroke: 73 Nm  
Max. energy consumption per hour: 45000 Nm

### W max.:

LE 100.1 = 100 kg

Special strokes on request only!

For load details see separate data sheet.

\*Tolerance for dowel holes  $\pm 0.02$   
for threaded holes  $\pm 0.1$ .

### Ordering example Tünkers sensing systems:

...T00 Without sensing  
...T02 Inductive sensor 24 V, 2 outputs  
without LED display

Type	Fast stroke force at 6 bar	Torque M max.	Standard strokes	Weight at 100 stroke ~ (kg)
LE 100.1	1.75 kN	Nm	50, 100	30