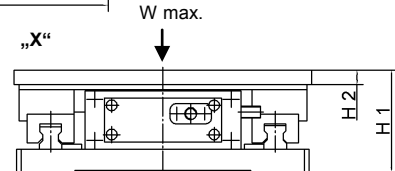
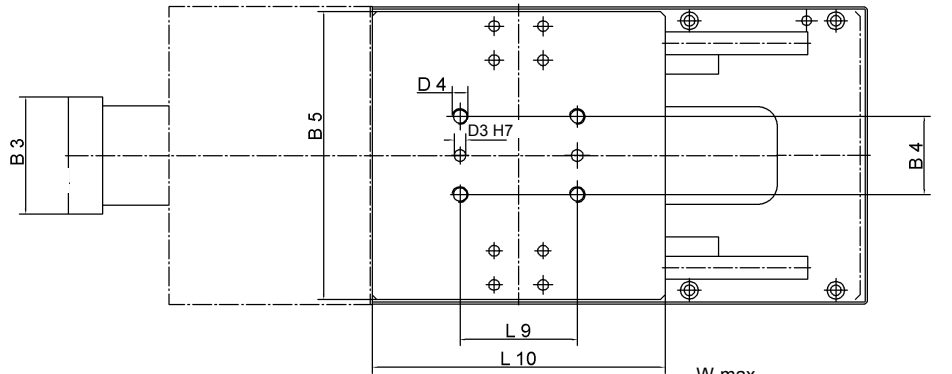
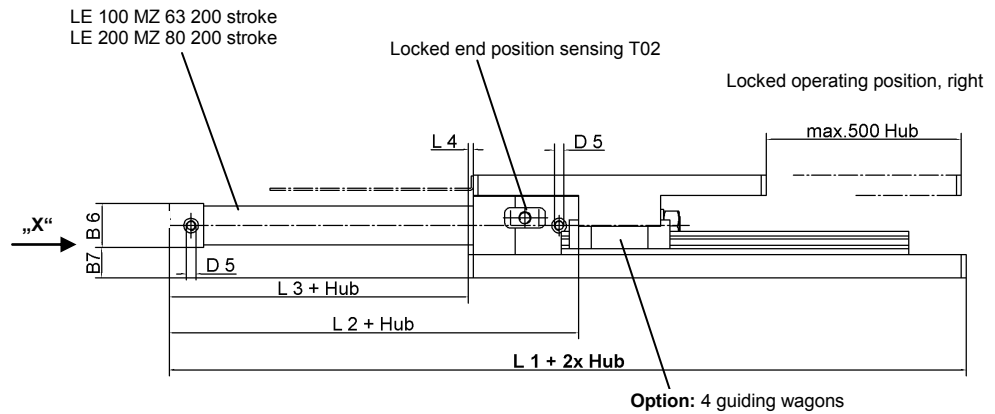
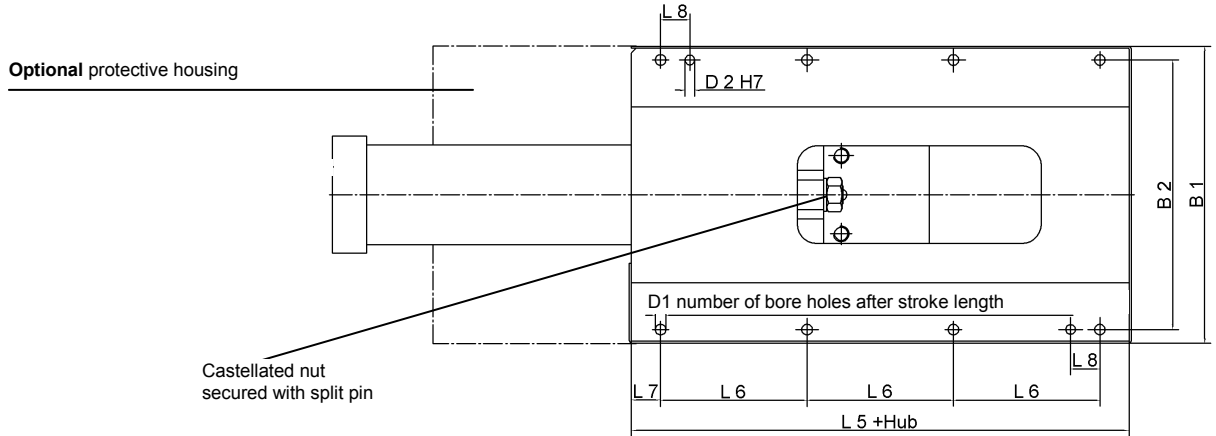


Linear Unit

max. 500 mm stroke, with end position lock on one side,
optionally with protective housing

LE 100/200



Ordering example:

LE 100 200 T02 4

LE 100: Type
200: Stroke
SB: **Option:** Protective housing
T02: Sensing system
4: **Option:** 4 guiding wagons

Repeatability: ± 0.1

Mounting position: horizontal
Special applications on request.

Ordering example Tünkers sensing systems:

...T00 Without sensing system
...T02 Inductive sensing 24 V, 2 outputs
without LED display

Customised strokes on request.

*Tolerance for dowel holes ± 0.02
for threaded holes ± 0.1 .

W max.:

LE 100 = 100 kg
LE 200 = 200 kg

Type	Fast stroke force at 6 bar	Torque M max.	Standard strokes	Weight at stroke 200 ~ (kg)	L1	L2	L3	L4	L5	L6	L7	L8	L9	L10
LE 100	1,75 kN	100 Nm	100, 200, 300,	30	416	219	106	5	310	150	30	30	120	300
LE 200	2,8 kN	300 Nm	400, 500	50	550	339	153	5	410	180	35	40	150	400

Type	B1	B2	B3	B4	B5	B6	B7	D1 Ø	D2 Ø	D3 Ø	D4	D5	H1	H2
LE 100	305	276	120	80	295	45	31	11	10	12	M16	1/8	105	20,5
LE 200	405	376	140	100	395	62	34	13	12	12	M20	1/4	130	22