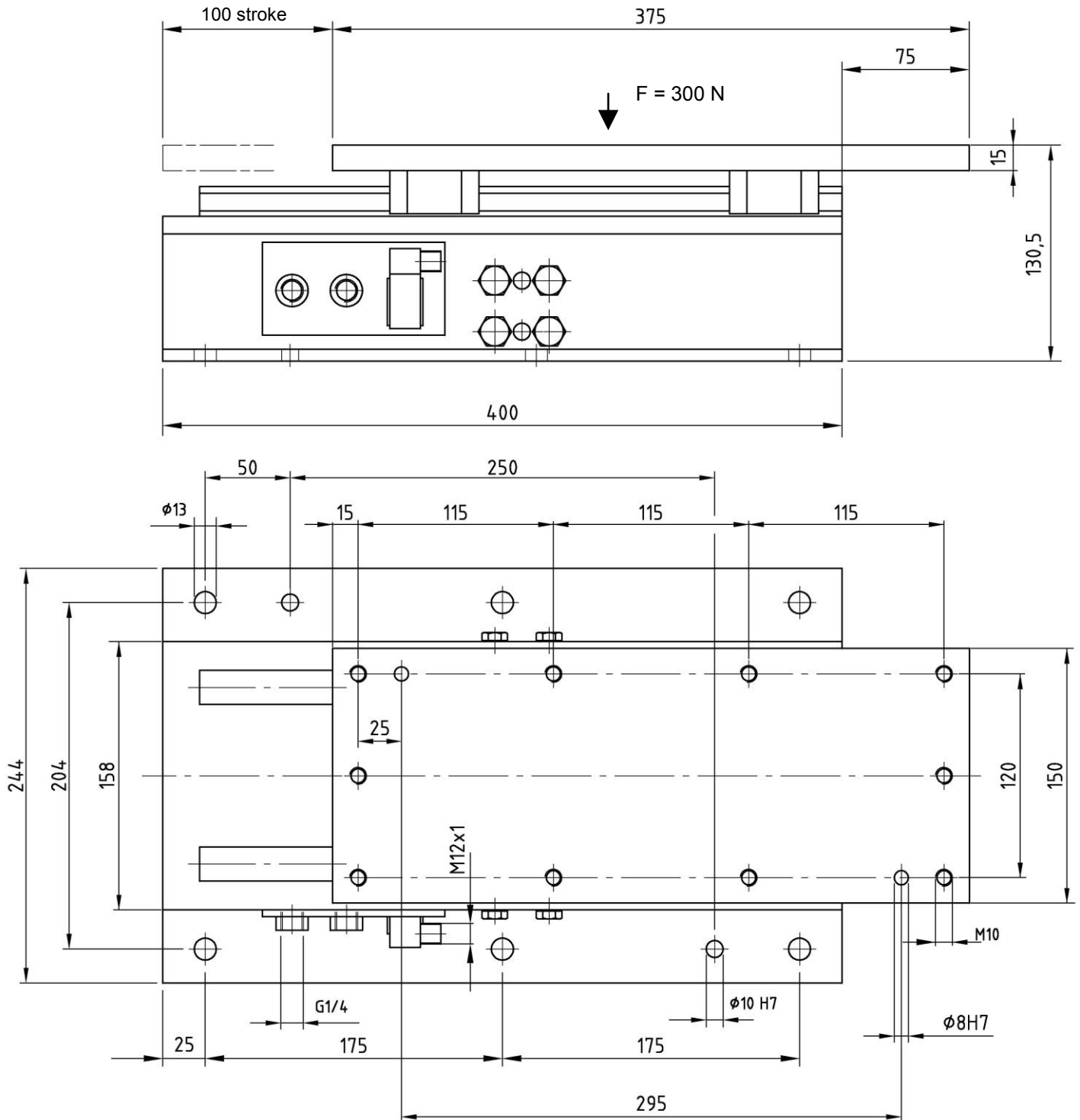


Slide unit

Variable adjustable stroke, max. 100 mm

LE 30-100



Ordering example:

LE 30-100 T12

LE 30: Type
100: Stroke
T12: Sensing system

Ordering example Tünkers sensing systems:

...T00 Without sensing
...T12 Inductive sensor 24 V, 1 output
with integrated LED's

Standard strokes:

Variably adjustable from 0 to 100 mm.

Weight

approx. 24 kg

Load $F_{max} = 300$ N

*Tolerance for dowel holes ± 0.02 for threaded holes ± 0.1 .

