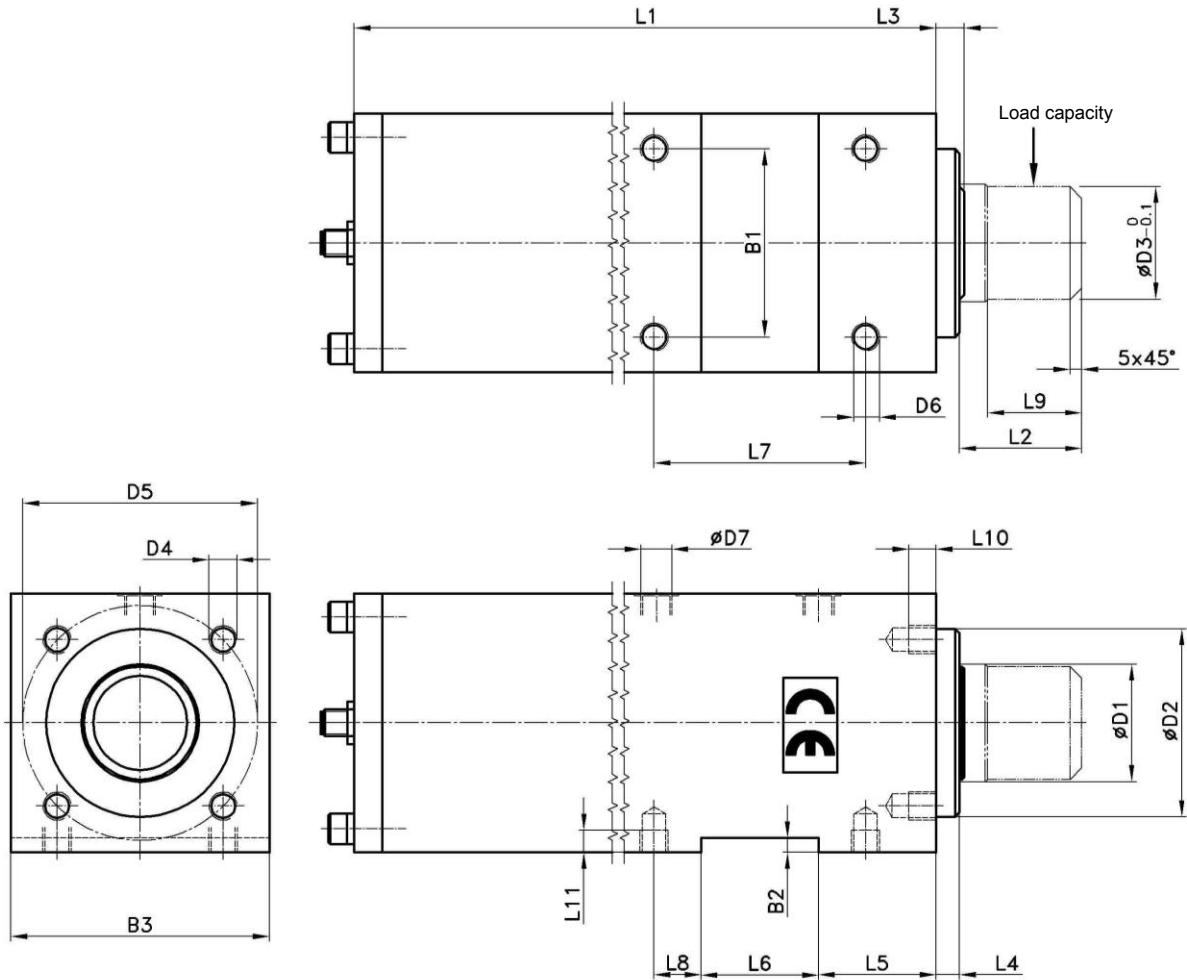


# Shot pin

Pin for lift or swivel operations

# SA 80



**Ordering example:**

SA 80-50 / 50 T01

SA 80-50: Type  
 50: Stroke  
 T01 Sensing system

**Ordering example Tünkers sensing systems:**

... T01 Sensing system with floating switch contacts according to general safety standards  
 ... T02 Sensing system according to VW guideline 39D 1673 with central power supply of both switches

**Attention:**

The shot pin should only be operated in unload position.  
 Option: Manual emergency override.

End position control occurs through mech. micro switch T01.

Colour: Red, RAL 3000

Medium: Air, max. 6 bar, operation permitted with oil-free air.

Type	Bolt Ø	Stroke	Weight ~ (kg)	Static load capacity (kg)
SA 80-50/50	50	50	12	2200

Type	B1	B2	B3 1	D1 f7	D2 f7	D3 -0,1	D4	D5 +0,1	D6	D7	L1	L2	L3	L4	L5	L6 +0,1	L7	L8	L9	L10	L11
SA 80-50/50	80	6	110	50	80	48	M12	105	M12	G1/4	328	52	12	10	50	50	90	20	40	16	17