

## Shot pins

# Shot pins SA 50-25/25, SA 80-100

- Safety shot pins for secure positioning of for example: roller conveyors, rotary loads and lifts
- Integrated pneumatic cylinder
- Integrated guide and position sensing
- Aluminum housing with robust guide for staking pins
- Safety switch for the Forward/Back end positions

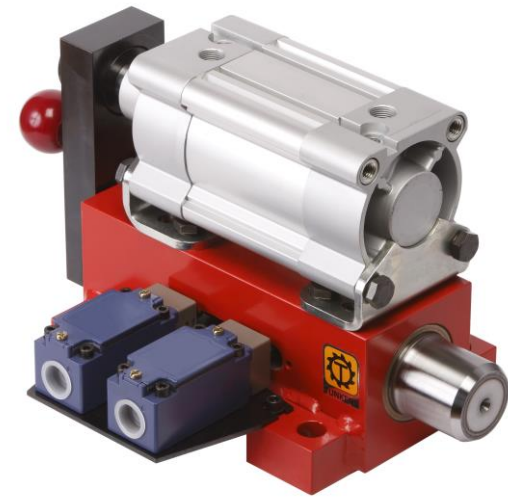


SA 50-25/25

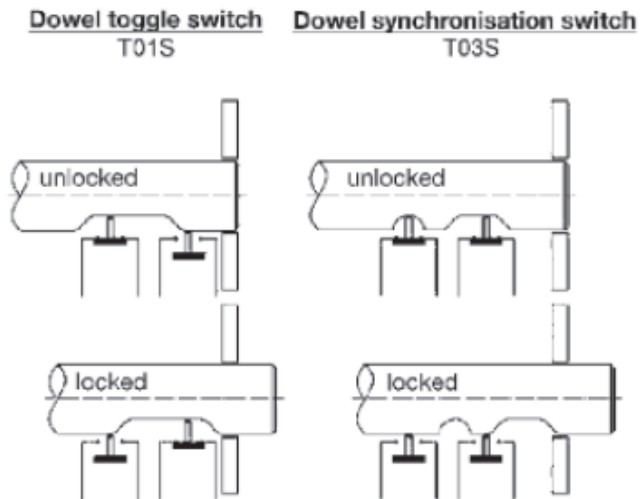
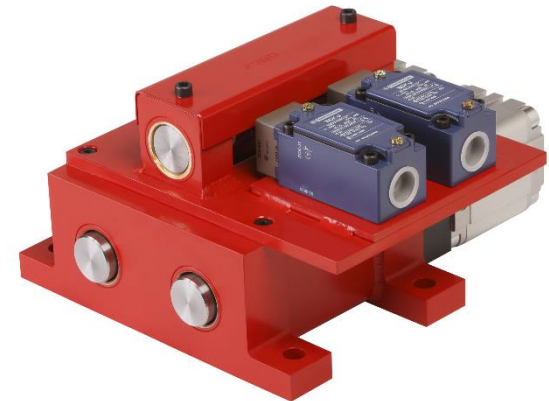


SA 80-100

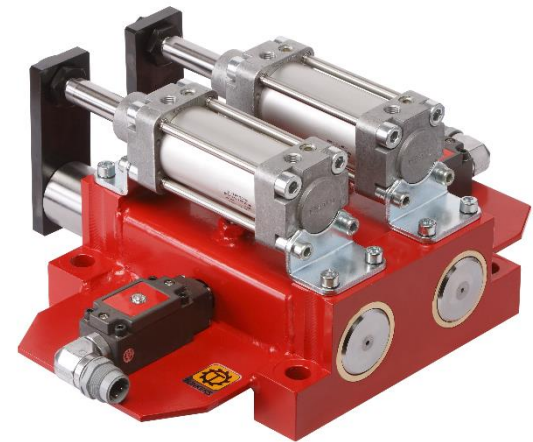
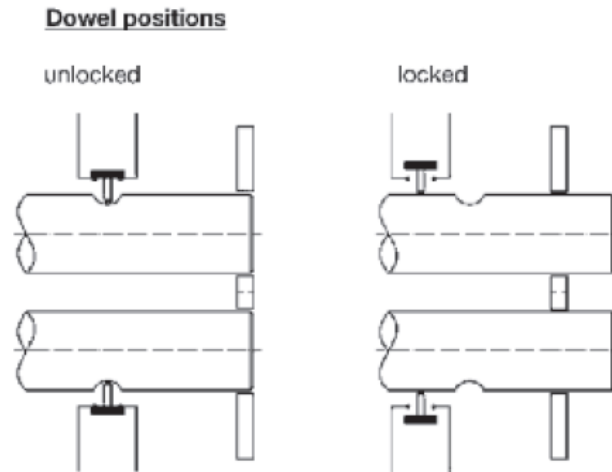
- Safety shot pin for secure positioning of for example: roller conveyors, rotary loads and lifts
- Modular construction with separate guide housing and external flange-mounted standard cylinder
- Single staking pin
- Optional switching mechanism with mechanical safety switches



- Safety shot pin for secure positioning of, for example, roller conveyors, rotary loads and lifts
- Modular construction with separate guide housing and external flange-mounted standard cylinder
- With pneumatic drive mechanism
- With dual staking pins
- Optional switching mechanism with mechanical safety switches



- Safety shot pin for secure positioning of, for example, roller conveyors, rotary loads and lifts
- Modular construction with separate guide housing and external flange-mounted standard cylinder
- With dual staking pins
- Optional switching mechanism with mechanical safety switches



## SA-series integrated form



SA 50



SA 80 (100, 125)



SA 50 T13

## SAN-series modular construction with single staking pins



SAN 50



SAN 80



SAN 80 T13

## SAND-series modular construction with double staking pins 50/80



SAND 50 M  
Manual



SAND 50  
Pneumatic



SAND 80 M  
Manual



SAND 80  
Pneumatic

## Characteristics:

Shot pin according to automotive safety standard for staking of linear and rotary movements such as rotary units and linear slides:

- **SA-Serie:** compact form with integrated pneumatic cylinder, integrated guide and position sensing
- **SAN-Serie:** modular construction with separate guide housing and external flange-mounted standard cylinder
- with pneumatic drive mechanism
- with single/dual staking pins

## Optional sensing systems:

- Safety switch with roller plunger (asynchronously)
- Safety switch with roller plunger (synchronously)
- Mechanical roller plunger switch
- Inductive sensor (T13)

- SA series, compact series with integrated cylinder, integrated guide and position sensing for secure positioning, e.g. the EXPERT-TÜNKERS roller conveyor

	SA 80-50/50	SA 100-70/80	SAN 40	SAN 50	SAN 80-50/25	SAN 80-50/50	SAND 50	SAND 80
∅ Pin (mm)	50	70	40	50	80	80	30	50
Stroke(mm)	50	80	50	25	25	50	40	50
Weight (kg)	6	12	9	9	24	24	12	27
Static load capacity (kg)	2200	6000	3000	8000	22000	22000	450	2200
Dimensions (l x w x d) (mm)	328 x 110 x 110	453 x 135 x 135	201 x 363 x 124	197 x 290 x 119	229,5 x 300 x 205	229,5 x 375 x 205	307 x 247,5 x 141,5	410 x 327 x 172,5

## Thank you for your attention

TÜNKERS Maschinenbau GmbH  
Pascal Stöters  
Am Rosenkothen 4-12  
40880 Ratingen

Telefon +49 (0) 2102-45 17-188  
Telefax +49 (0) 2102-45 17-9999

E-Mail [pascal.stoeters@tuenkers.de](mailto:pascal.stoeters@tuenkers.de)  
Internet [www.tuenkers.de](http://www.tuenkers.de)

