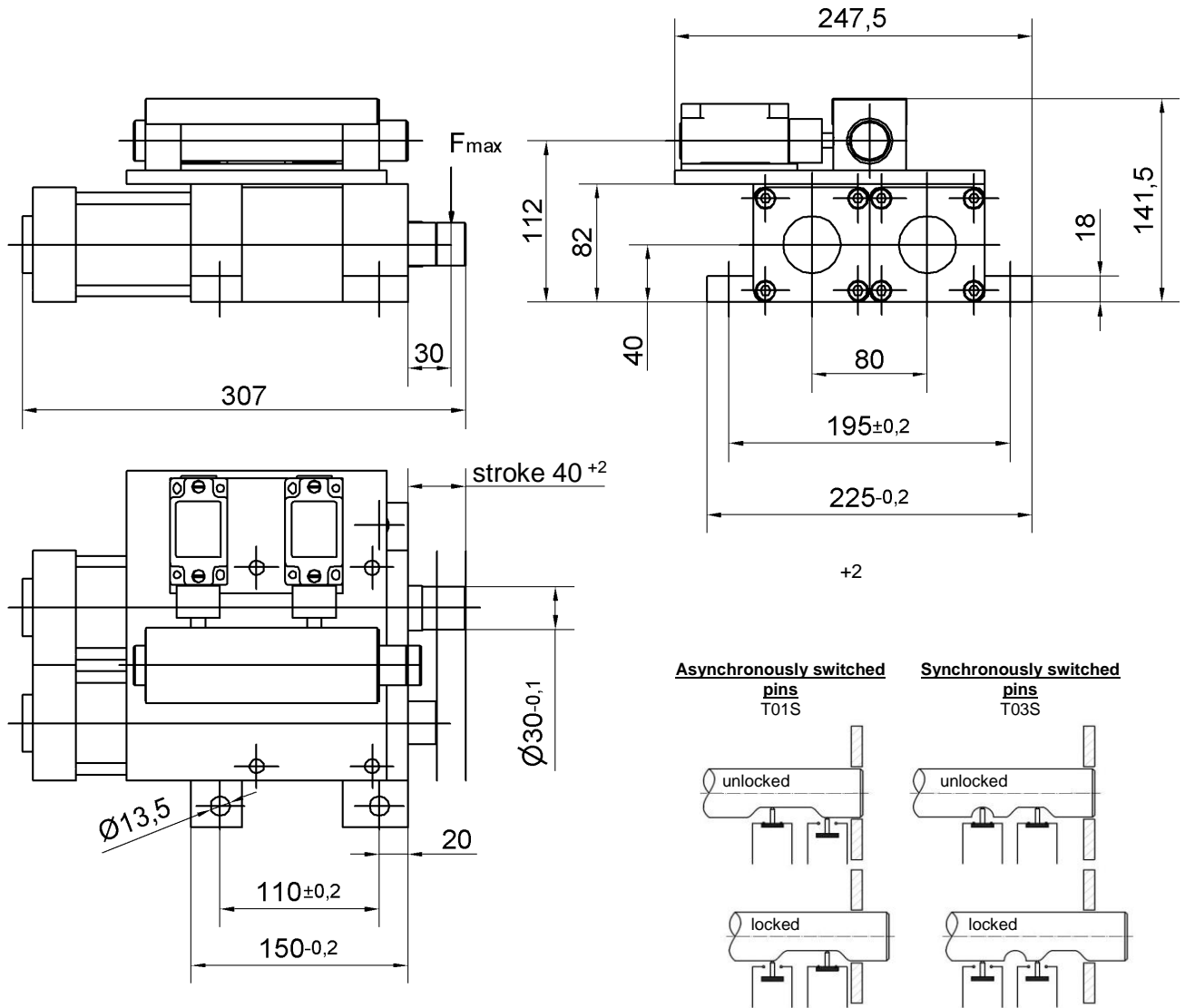


Shot pin

Tandem design, pneumatic operated

SAND 50



Ordering example:

SAND 50-30/40 T01S LH

SAND 50: Type
 30: Pin Ø
 40: Stroke
 T01S: Sensing system
 LH: Sensing as drawn
 (RH = sensing mirror-image)

Ordering example Tünkers sensing systems:

...T01S Safety switch with roller plunger (asynchronously switched)
 ...T03S Safety switch with roller plunger (synchronously switched)
 ...T13S Inductive sensor 24 V

Air connection of pneumatic cylinder = G 1/8

Attention:

- Do not operate under load!
- End position control via safety switch with roller plunger:
 - Euchner (Standard)
 - other types on request
- Stepless adjustable switch position.
- max. load capacity (static) per pin: $F_{max} = 4.5 \text{ kN}$

Medium: Air, max. 6 bar, operation permitted with oil-free air.