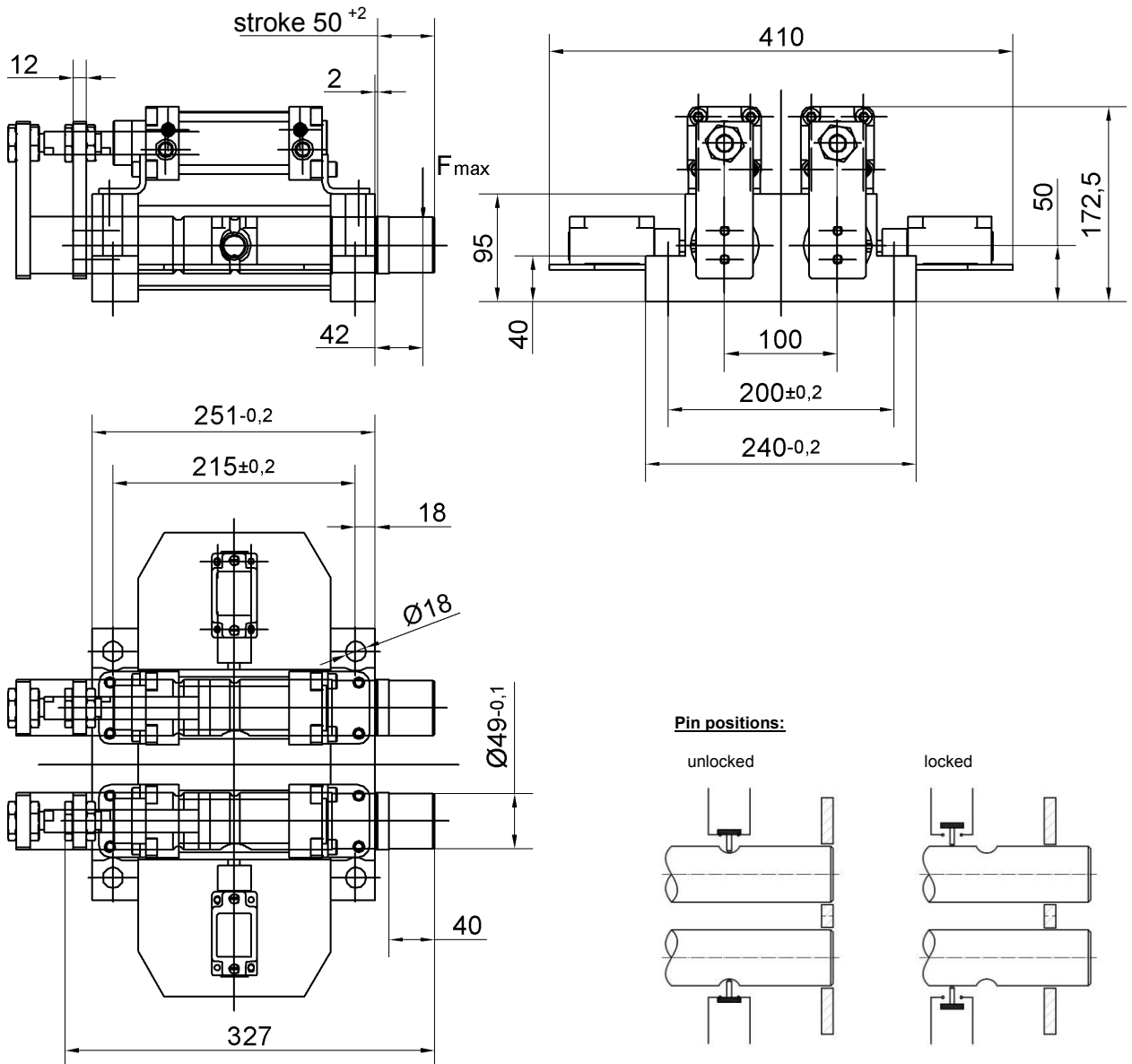


Shot pin

Tandem design, pneumatic operated

SAND 80



Ordering example:
SAND 80-50/50 T13S

SAND 80 : Type
50: Pin Ø
50: Stroke
T13S: Sensing system

Ordering example Tünkens sensing systems:

...T01S Safety switch with roller plunger
...T13S Inductive sensor 24 V

Air connection of pneumatic cylinder = G 1/4

Attention:

- Do not operate under load.
- End position control via safety switch with roller plunger
 - Euchner (Standard)
 - other types on request
- max. load capacity (static) per pin: F_{max} = 22 kN

Medium: Air, max. 6 bar. operation permitted with oil-free air.