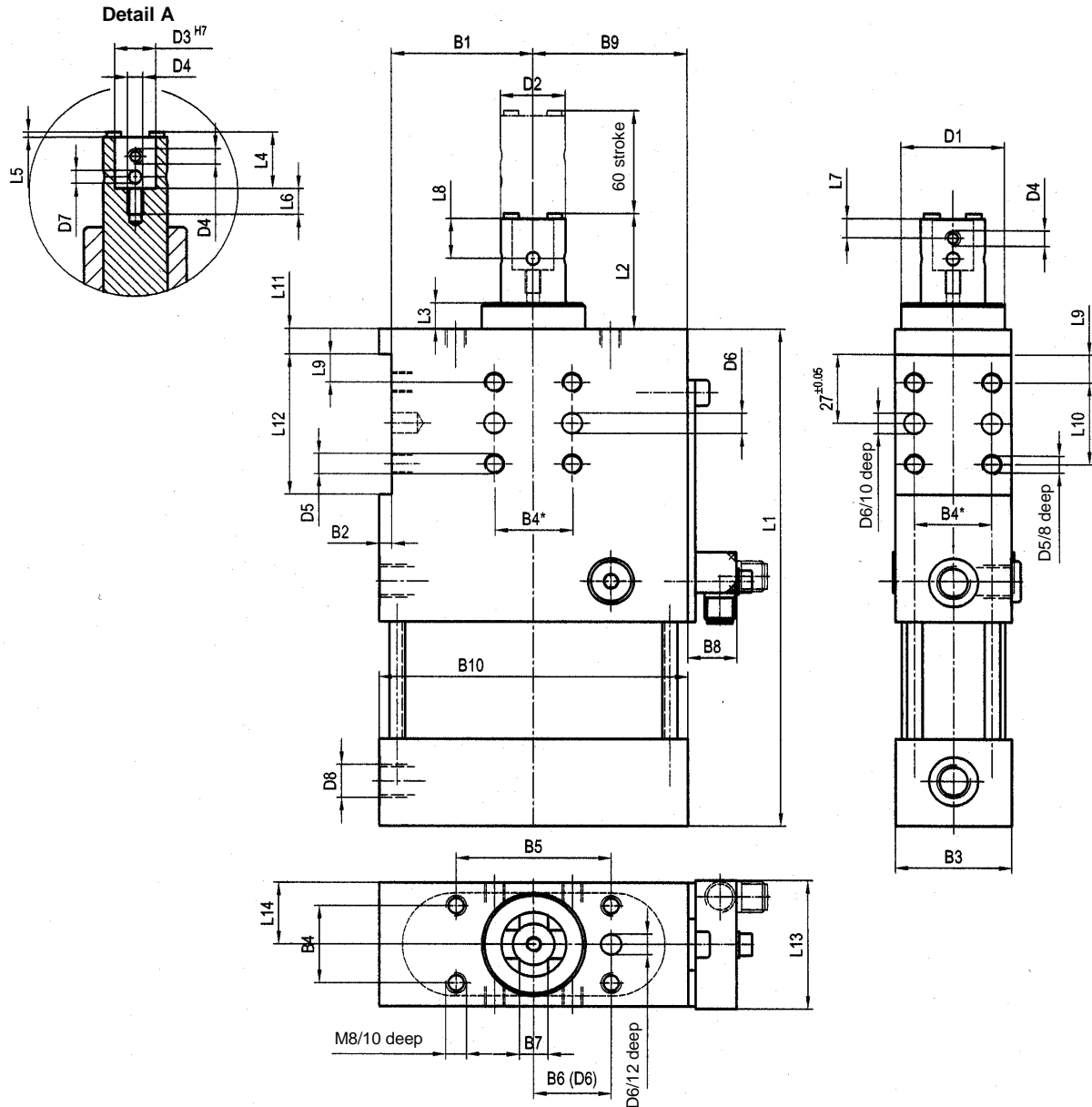


# Retractable Locating Pin

anti-rotating, 60 mm stroke

# SZK... .1 BR3



**Ordering example:**

SZK 40.1 BR3 x 60 T12

SZK 40.1 BR3:           Type  
60:                    Stroke (special stroke 40 < 60 mm)  
T12                    Sensing system

Further piston rod connections on request, see accessories data sheet "Piston rod versions".

\*Tolerance for dowel holes  $\pm 0.2$ , for threaded holes  $\pm 0.1$ .

Medium: Air, max. 6 bar, operation permitted with oil-free air.

**Attention!**

External throttle check valves must be provided on assembly. They are not included in the scope of delivery!

**Ordering example Tünkers sensing system:**

...T12                    Inductive sensor 24 V, 1 output with integrated LED's

Type	Stroke	Stat. side force max. (N)	Piston Ø (mm)	Weight ~ (kg)
SZK 40.1 BR3	60	150 N	40	2.1
SZK 63.1 BR3	60	200 N	63	3.4

Type	B1 $\pm 0.1$	B2	B3	B4*	B5 $\pm 0.2$	B6 $\pm 0.02$	B7 $+0.1$ $+0.05$	B8	B9	B10	D1 f7	D2 f7	D3 H7	D4	D5	D6 H7	D7	D8
SZK 40.1 BR3	32.5	5	45	30	60	30	11	21	37.5	75	40	25	16	M6	M8	8	5	G1/8
SZK 63.1 BR3	55	5	45	30	60	30	11	21	60	120	40	25	16	M6	M8	8	5	G1/4

Type	L1	L2	L3	L4	L5	L6	L7	L8	L9 $\pm 0.1$	L10 $\pm 0.1$	L11	L12 $+0.1$	L13	L14 $+0.1$
SZK 40.1 BR3	235	45	10	22	2	10	7.5	15.5	11	32	10	55	47	22.5
SZK 63.1 BR3	235	45	10	22	2	10	7.5	15.5	11	32	10	55	47	22.5