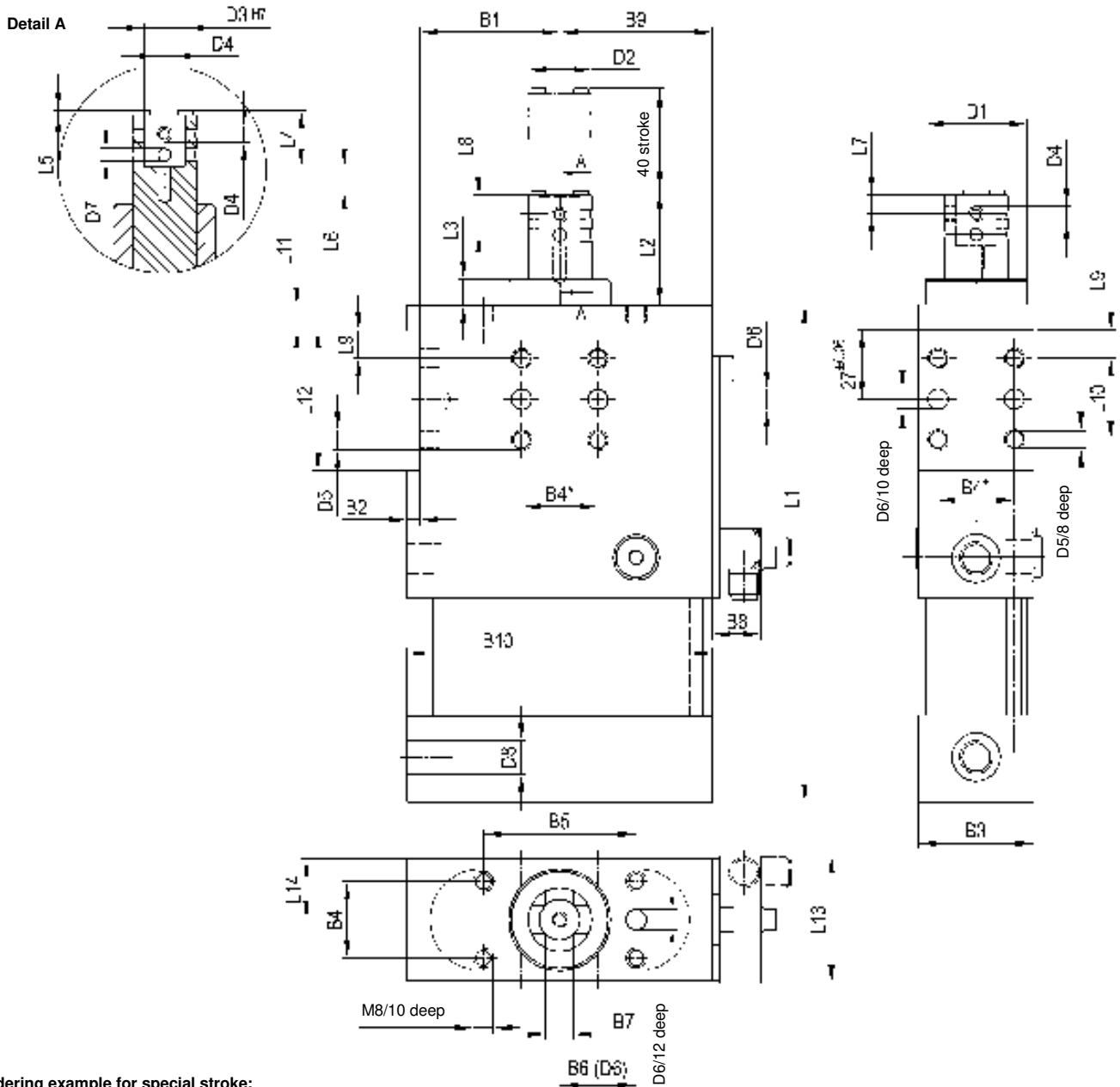


# Retractable Locating Pin

anti rotating function, 40 mm stroke

# SZK... BR3



**Ordering example for special stroke:**

SZK 40 BR3 x 25 T12

SZK 40 BR3: Type  
 25: Special stroke (15 < 40 mm)  
 T12: Sensing system

\*Tolerance for dowel holes ± 0.02, for threaded holes ± 0.1.  
 Medium: Air, max. 6 bar, operation permitted with oil free air.

**Attention!**

External throttle check valves must be provided on assembly.  
 They are not included in the scope of delivery!

**Ordering example Tünkers sensing system:**

...T12 Inductive sensor 24 V, 1 output with integrated LED's

Type	Stroke	Stat. side force max (N)	Piston Ø (mm)	Tensile force at 5 bar (N)	Pressing force at 5 bar (N)	Weight ~ (kg)
SZK 40 BR3	40	150 N	40	350	600	2.0
SZK 63 BR3	40	200 N	63	1400	1500	2.9

Type	B1 +0,1	B2	B3	B4*	B5 +0,2	B6 ±0,02	B7 +0,1 +0,05	B8	B9	D1 f7	D2 f7	D3 H7	D4	D5	D6 H7	D7	D8
SZK 40 BR3	32.5	5	45	30	60	30	11	21	37.5	40	25	16	M6	M8	8	5	G1/8
SZK 63 BR3	55	5	45	30	60	30	11	21	60	40	25	16	M6	M8	8	5	G1/4

Type	L1	L2	L3	L4	L5	L6	L7	L8	L9 ±0,1	L10 ±0,1	L11	L12 +0,1	L13	L14 +0,1
SZK 40 BR3	195	45	10	22	2	10	7.5	15.5	11	32	10	55	47	22.5
SZK 63 BR3	195	45	10	22	2	10	7.5	15.5	11	32	10	55	47	22.5