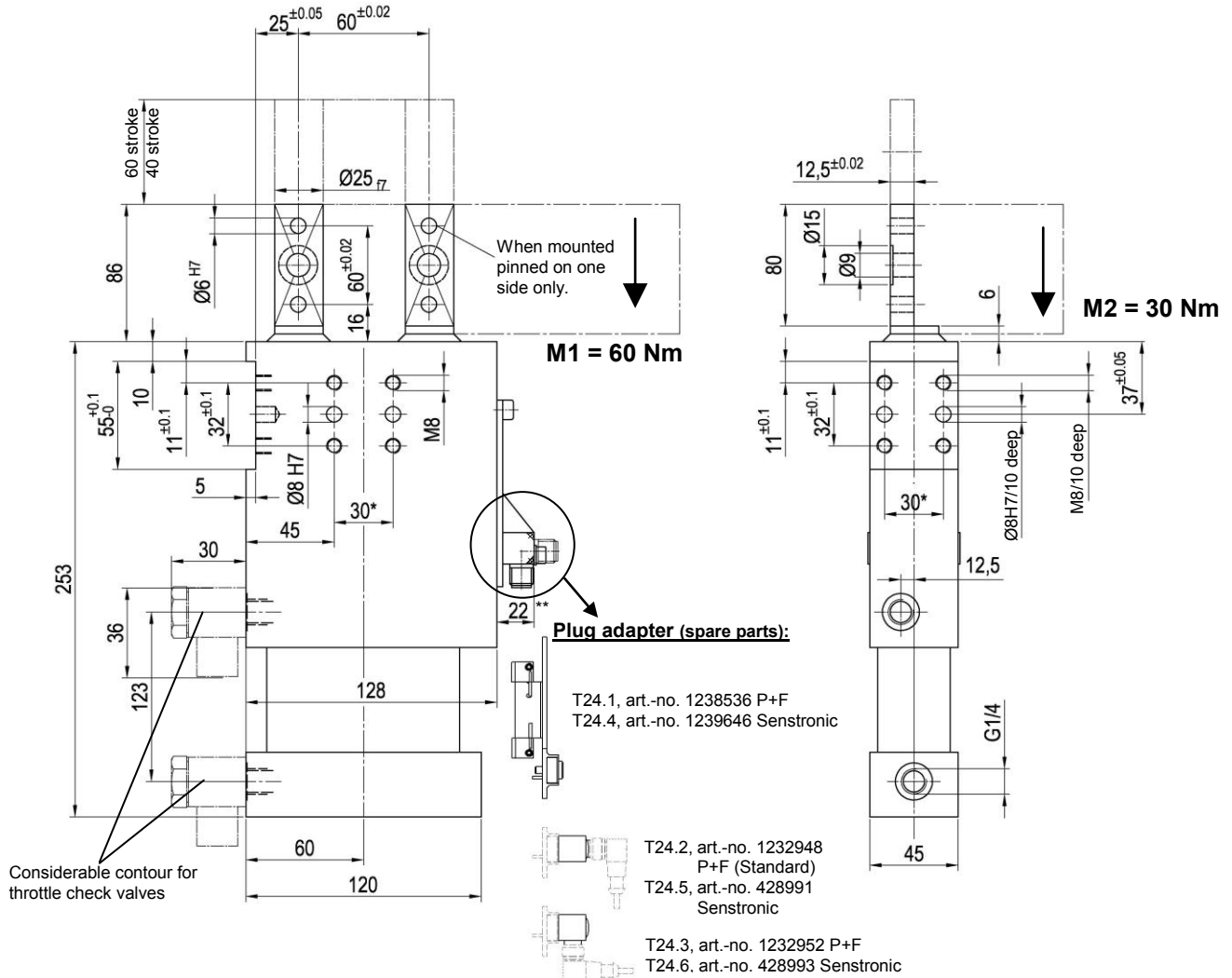


# Retractable Locating Pin / Linear Unit

with double guide for offset pins, rotatable piston rods

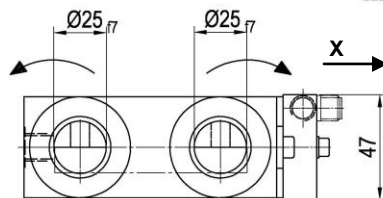
## SZKD 63.5 BR3



Considerable contour for throttle check valves

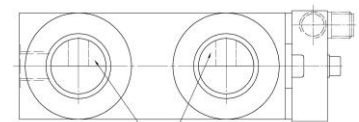
The piston rods are rotatable; the position must be set when mounted.

**Attention!** Turn the piston rods only in retracted end position!

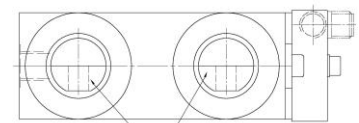


Tolerances at max. shear force:

| X | stroke 0  | ± 0.03 |
|---|-----------|--------|
|   | stroke 60 | ± 0.1  |
| Y | stroke 0  | ± 0.1  |
|   | stroke 60 | ± 0.2  |



Version A13



Version A23

### Ordering example:

SZKD 63.5 BR3 A13 x 60 T12

SZKD 63.5 BR3: Type  
A13: Version  
60: Stroke  
T12: Sensing system

### Ordering codes Tünkers sensing systems:

...T00 Without sensing  
...T12 Inductive sensor 24 V, 1 output with integrated LED's  
...T24.1/4 Without plug adapter  
...T24.2/5 With straight plug adapter (standard)  
...T24.3/6 With plug adapter 90° angle

### Standard stroke:

60, 40 mm  
further strokes on request

Compressive force: 1500 N at 5 bar  
Tensile force: 1400 N at 5 bar  
Shear force: max. 200 N per piston rod  
Weight: approx. 4.5 kg

### Optional:

With protection cover for piston rods.

The guiding elements may be used with connecting plates only.

\*Tolerance for dowel holes ± 0.02, for threaded holes ± 0.1.

\*\* with sensing system T24.. = + 8 mm

Medium: Air, max. 6 bar, operation permitted with oil-free air.

### Attention!

External throttle check valves must be provided on assembly. They are not included in the scope of delivery!