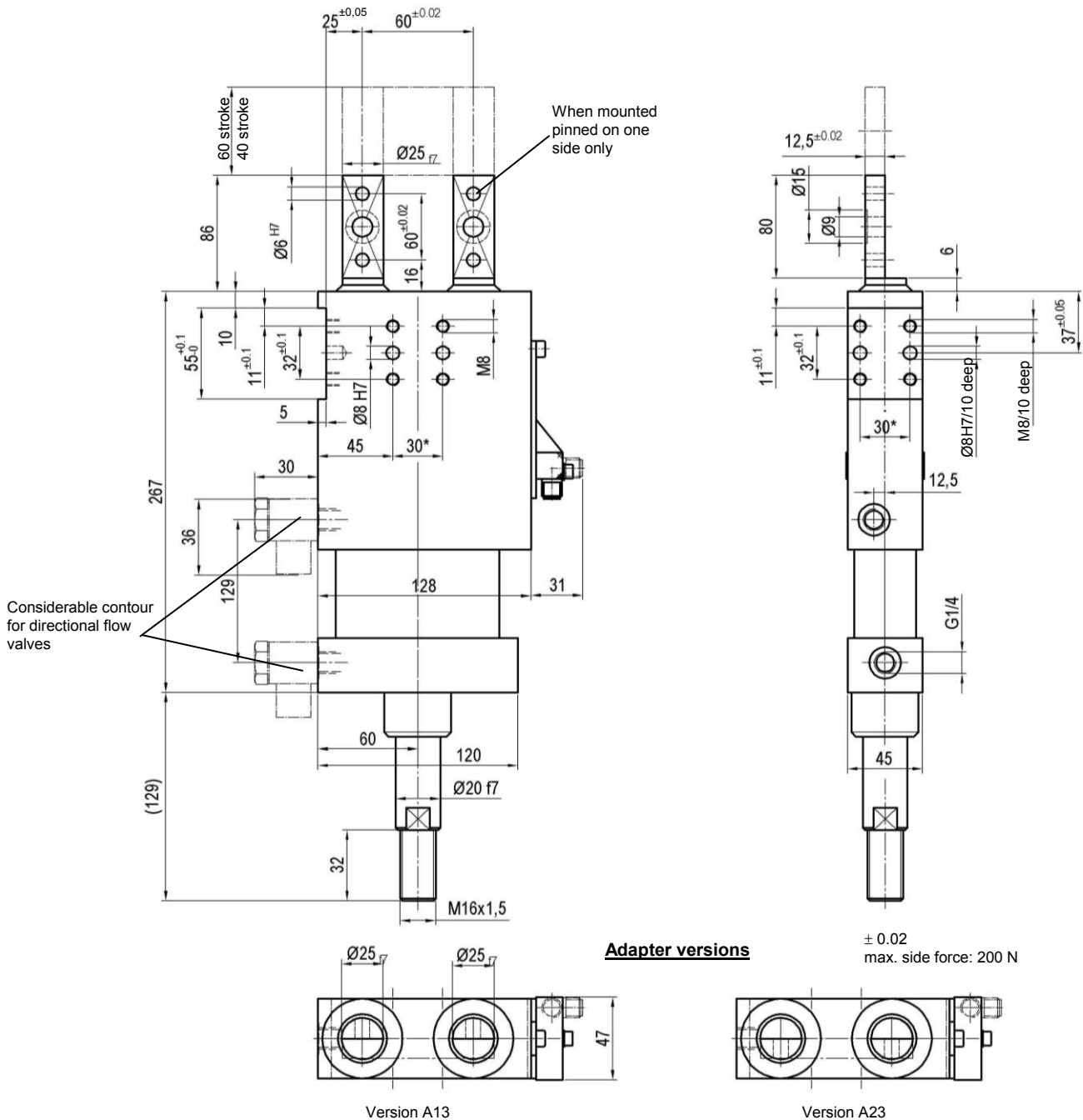


Retractable Locating Pin

with double guide rods for off-set pins,
manually operated

SZKD 63.5 BR3 Z



Ordering example:

SZKD 63.5 BR3 Z A13 T12 60 stroke

SZKD 63.5 BR3:	Type
Z:	Hand lever
A13:	Adapter version
T12:	Sensing system
60:	Stroke

Ordering example Tünkers sensing systems:

...T00	Without sensing
...T08	Pneumatic sensing system (see separate data sheet)
...T12	Inductive sensor 24 V, 1 output with integrated LED's

Standard stroke:

60, 40 mm
further strokes on request

Tensile force: 1400 N at 5 bar

Option:

Protection cover for guide rods.

The guide rods may only be used with connecting plate.

*Tolerance for dowel holes ± 0.02 , for threaded holes ± 0.1 .

Medium: Air, max. 6 bar, operation permitted with oil-free air.

Attention!

External throttle check valves must be provided on assembly.
They are not included in the scope of delivery!