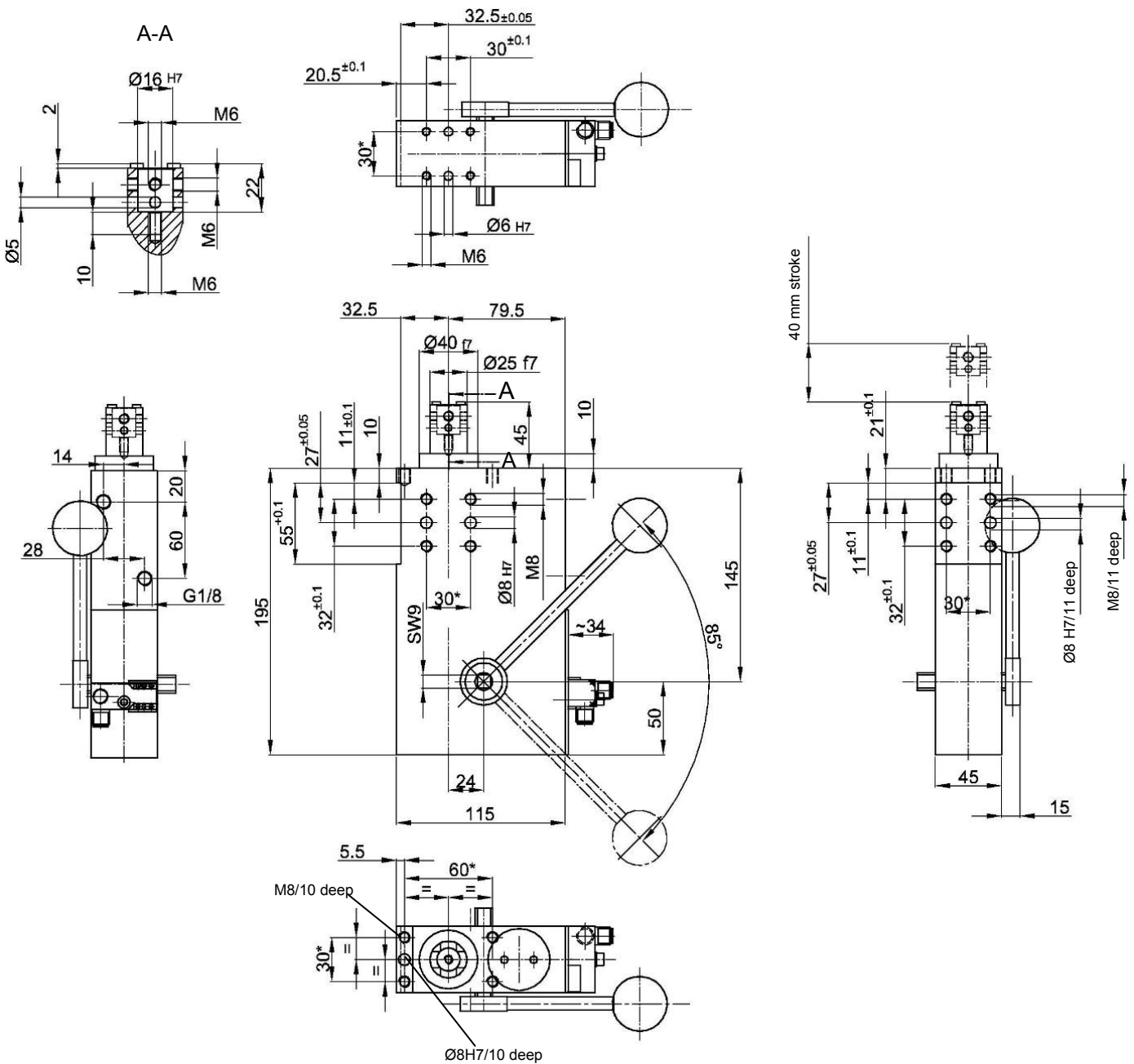


# Retractable Locating Pin

For central pin assembly, toggle locked end-position, with hand lever

## SZV.1 40 Z A01



### Ordering example:

SZV.1 40 Z A01 T12

SZV.1 40 Z A01: Type  
Z: Hand lever  
T12: Sensing system

### Ordering example Tünkers sensing system:

..T12 Inductive sensor 24 V, 1 output with integrated LED's

### Further retractable locating pins with hand lever (Z):

SZV.1 40 A02  
SZV.1 40 A10  
SZV.1 40 A..2  
SZV.1 40 B

A 5/3 way valve is required, central position de-aerated.

Shearing force: min. 500 N at 6 bar, max. in end position 3000 N  
Tensile force: min. 420 N at 6 bar, max. tear-off force 3000 N  
Holding force: 5 kN  
Shear load: 300 N  
Piston Ø: 40  
Weight: 3.6 kg

\*Tolerance for dowel holes  $\pm 0.02$ , for threaded holes  $\pm 0.1$ .  
Medium: Air, max. 6 bar, operation permitted with oil-free air.

### Attention!

External throttle check valves must be provided on assembly. They are not included in the scope of delivery!