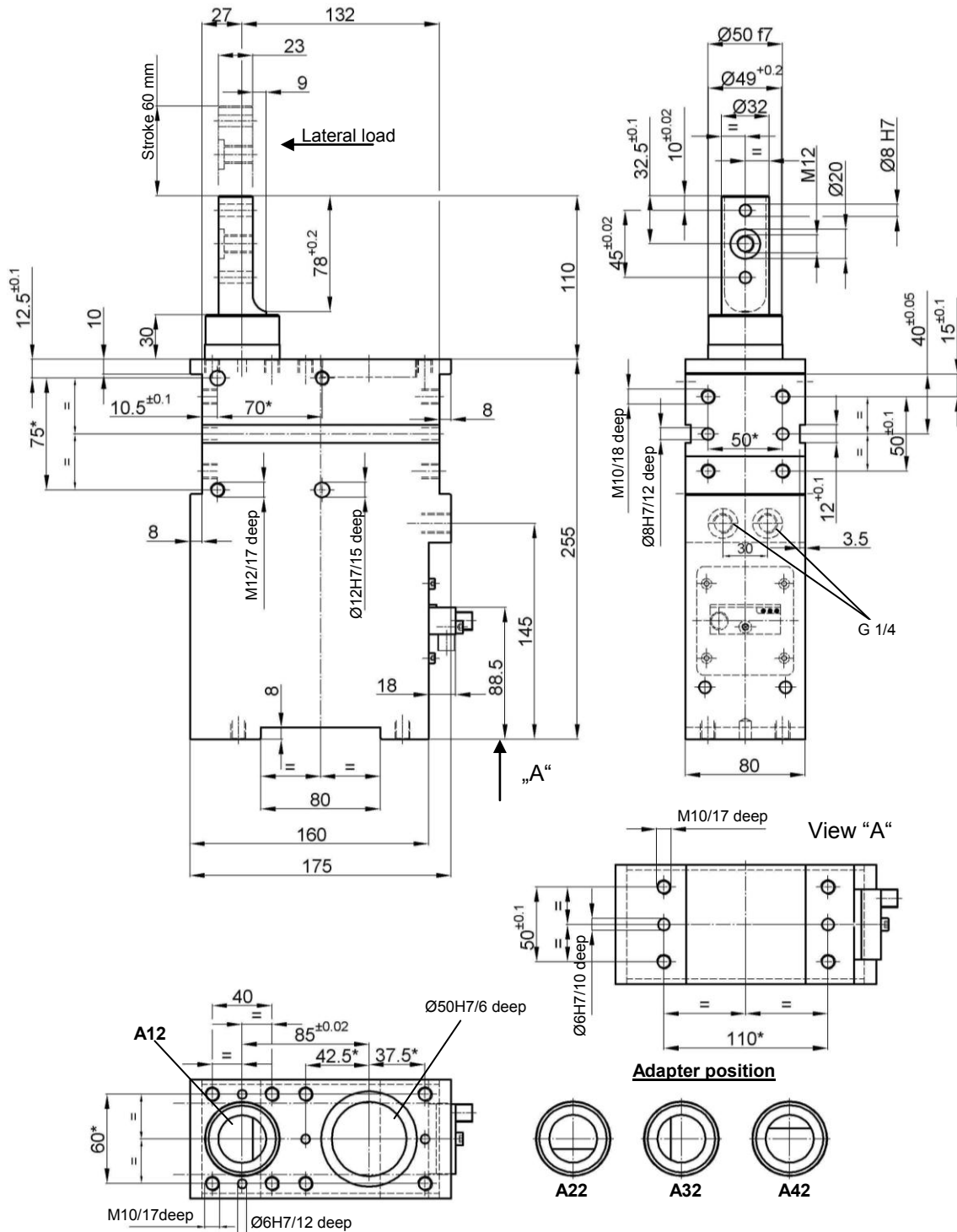


Linear Unit for Retractable Locating Pin

Function

SZV 60 A...2

Pushrod adapter for off-centre pins and contour blocks,
toggle-locked end position, anti-rotating



Ordering example:

SZV 60 A12 T12

SZV 60: Type
A12: Adapter position
T12: Sensing system

Shearing force: min. 880 N at 6 bar. max. in end position 7500 N
Tensile force: min. 800 N at 6 bar. max. tear-off force 7500 N
Max. admissible lateral load: approx. 500 N

Weight: approx. 9.2 kg

Ratio of pull force to push force see diagram.

Ordering example Tünkers sensing systems:

...T00 Without sensing
...T12 Inductive sensor 24 V, 1 output with integrated LEDs

*Tolerance for bore holes ± 0.02 for threaded holes ± 0.1 .
Medium: Air. max. 6 bar. operation permitted with oil-free air.

Attention!

External throttle check valves must be provided on assembly.
They are not included in the scope of delivery!