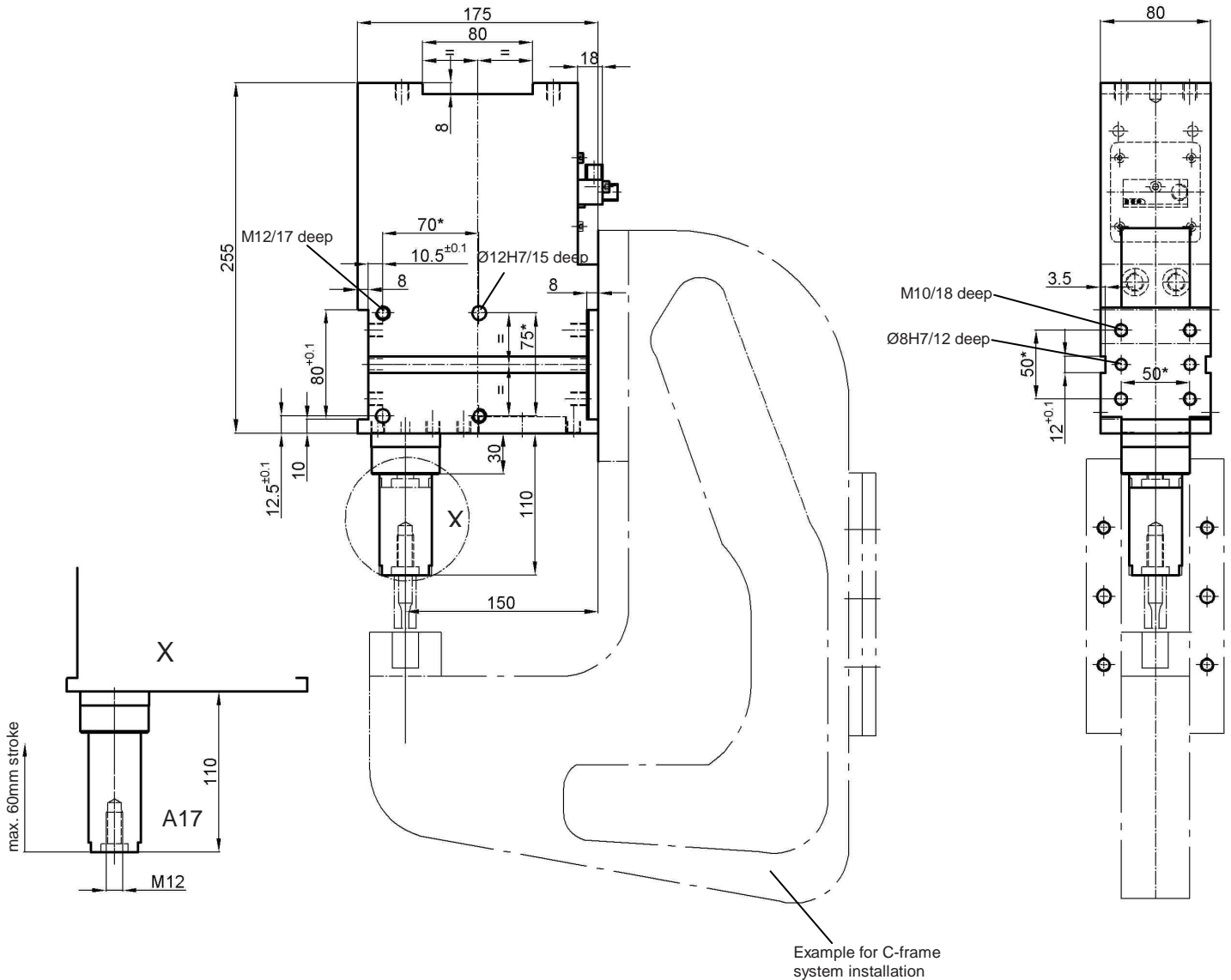


# Linear Unit as Force Cylinder

## SZV 60 A17

for piercing, stamping and joining operations



### Order example:

SZV 60 A17 40 T12

SZV 60 Type  
 A17: Piston rod type  
 40: Stroke  
 T12: Sensing system

### Order key for Tünkers sensing systems:

...T00 without sensing system  
 ...T12 Inductive sensing 24V, 1 output with integrated LEDs

Shearing force: min. 880 N at 6 bar, max. in end position 7500 N

Tensile force: min. 800 N at 6 bar, max. tear-off force 7500 N

Max. admissible lateral load: approx. 500 N

Stroke: 10 - 60 mm, available in 10 mm intervals.

Weight: approx. 9,2 kg

For more technical information on the retractable locating pin cylinder see data sheet SZV 60 A01.

\*Tolerance for bore holes  $\pm 0,02$  for threaded holes  $\pm 0,1$ .