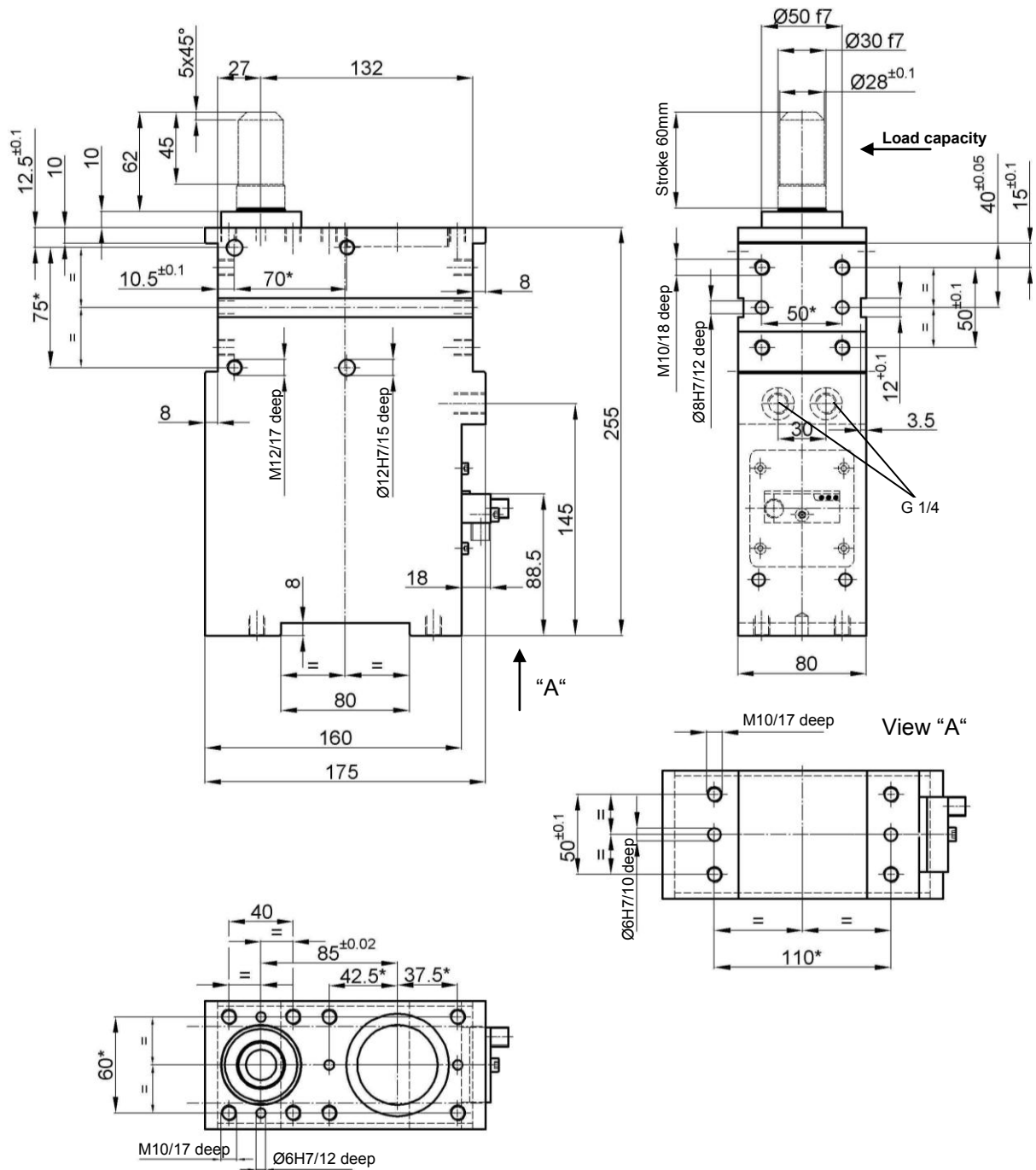


Linear Unit for Shot Pin function

Pins for lifting or swivelling operations
Toggle-locked end position

SZV 60 SA



Ordering example:

SZV 60 SA T12

SZV 60 SA: Type
T12: Sensing system

Static load capacity: approx. 700 N at 6 bar

Weight: approx. 8.8 kg

*Tolerance for stud boreholes: ± 0.02, for threaded holes: ± 0.1.

Order key for Tünkers sensing systems:

...T00 without sensing system
 ...T01 Microswitch
 ...T12 Inductive sensor 24 V, 1 output with integrated LEDs