

EFG Belt conveyor

System EXPERT-TÜNKERS



Belt Conveyor

Technical characteristics



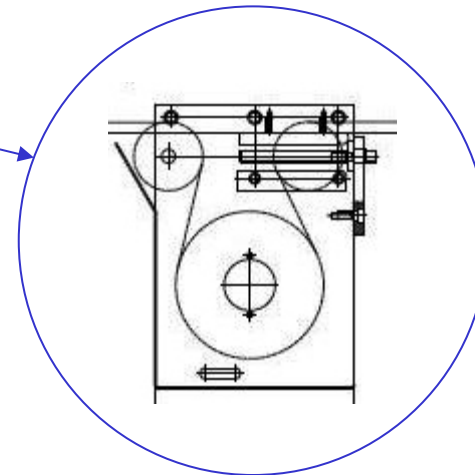
Characteristics:

- Robust base frame in steel construction
- Drive motor arranged at the base and additional deflection roller for pretensioning and length adjustment
- Loading and depositing area free from interfering edges, as the motor is located below the conveyor belt
- Constant belt length, also after renewed tensioning
- Individual lengths and widths available



Motor, reduction gear unit and belt tensioner are space-savingly accommodated as one mechanical module in the frame work of the belt conveyor.

- Optimal accessibility for maintenance and repair
- Entry and exit can be designed free from interfering edges



Design:

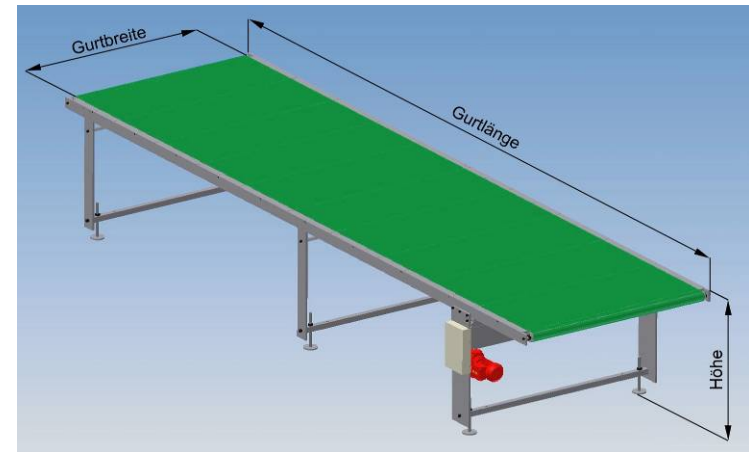
- Base frame: Screw-fitted steel construction
- Belt: Robust and wear-resistant textile construction urethane impregnated
- Drive: SEW geared motor
- Conveying speed: 1.5 – 10 m / min
- Customer load: ~ 100 kg
(higher loads upon request)

Order example:

EBF 500-100-100

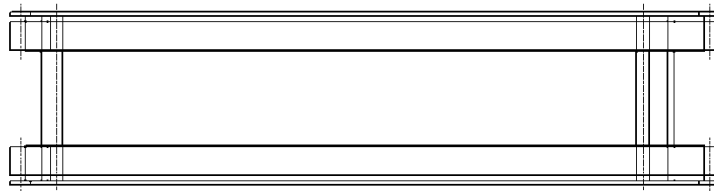
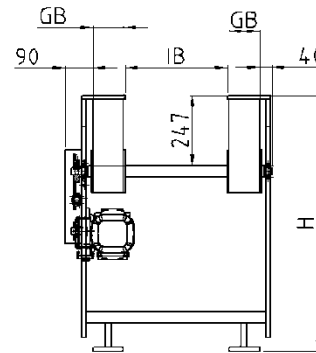
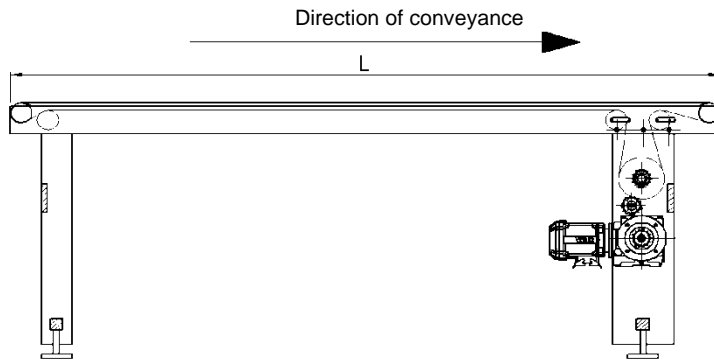
EBF	Type
500	Length
100	Width
100	Height

**Lengths and widths of belts can be freely combined.
Special sizes upon request!**



Belt lengths (cm)	Belt widths (cm)	Height (cm)
300	50	60 - 100
400	80	
500	100	
600	120	
	140	

Special design dual belt with central opening



Order example:

EBF 500-100-100

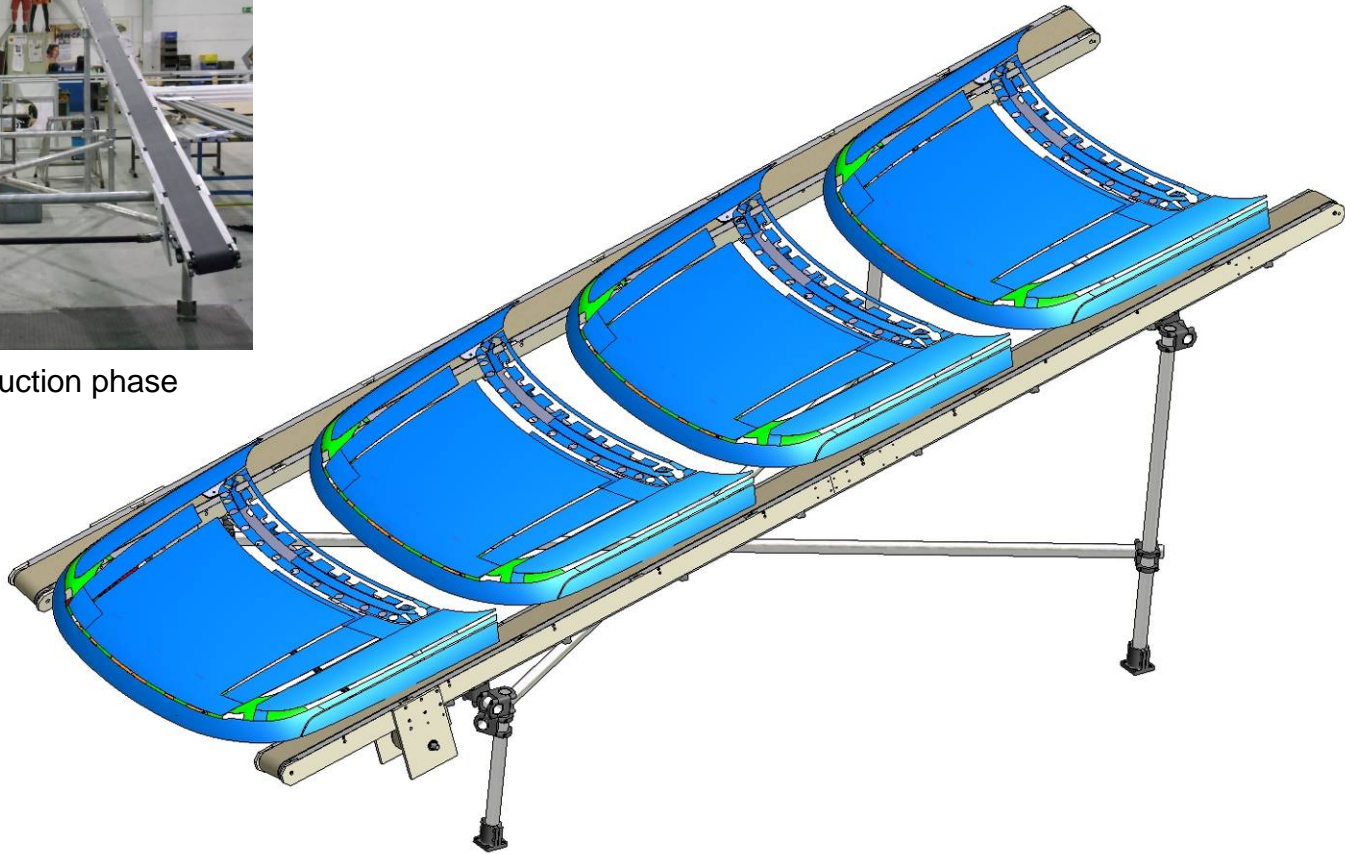
EBF	Type
500	Length
100	Width
100	Height

Height (H) [mm]		Length (L) [mm]		Belt width (GB) [mm]		Interior width (IB) [mm]	
min.	max.	min.	max.	min.	max.	min.	max.
700	1,200	1,000	3,000	100	150	200	1,200

Example: Dual belt for bonnet conveying



Construction phase



Special design Split belt for upright door conveying

