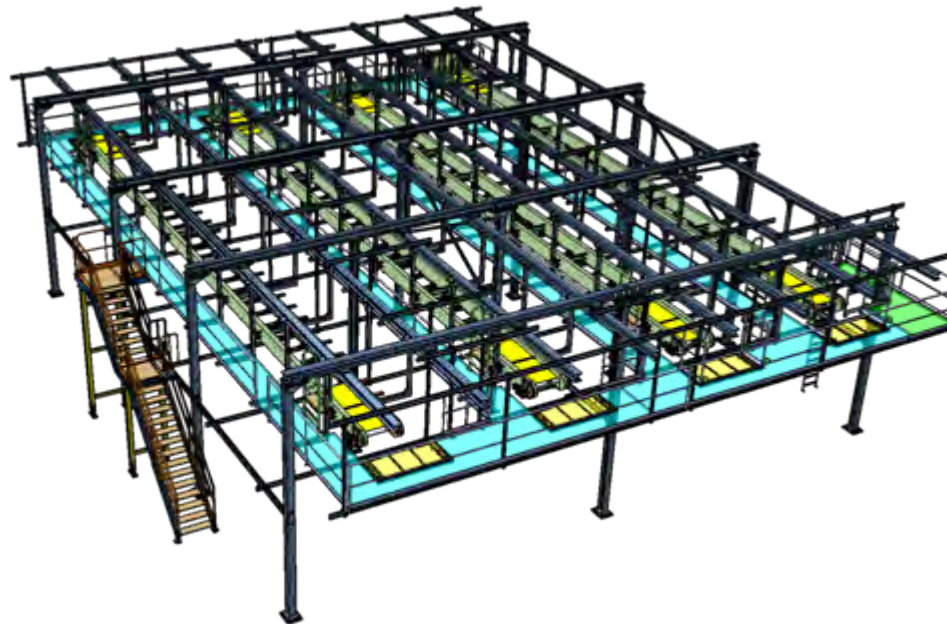
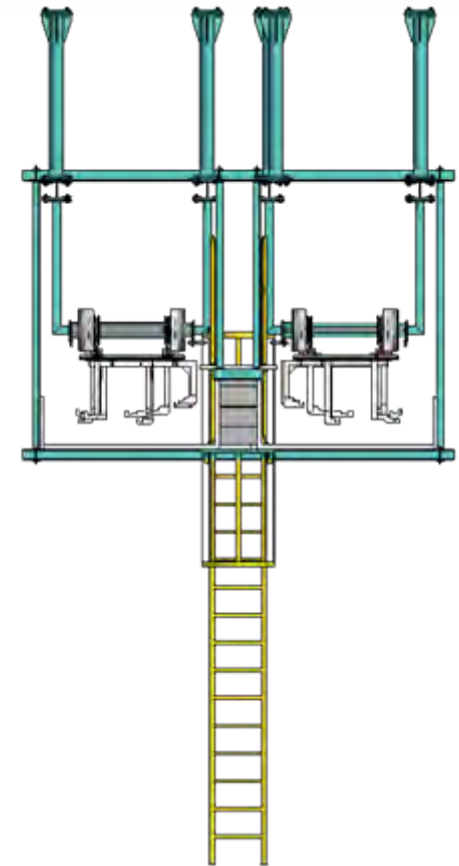
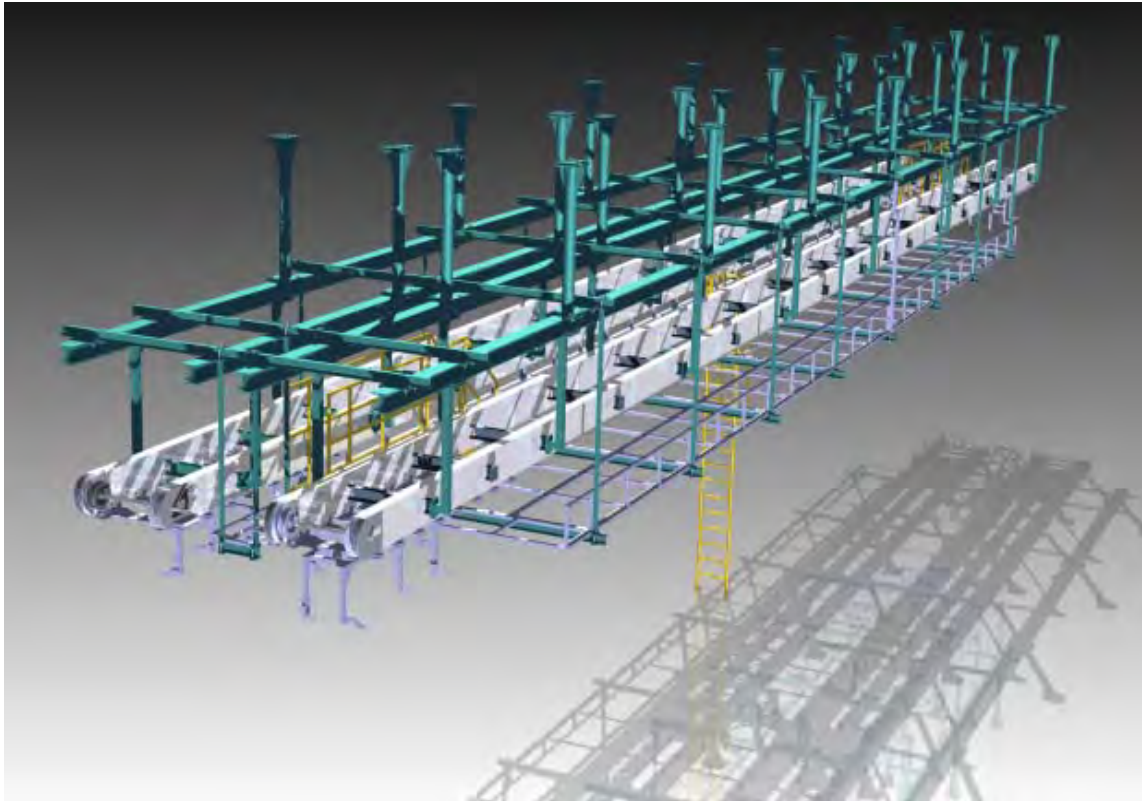


Steel Construction



Steel construction with suspended ceiling for overhead operation



Steel construction mounted on pillars



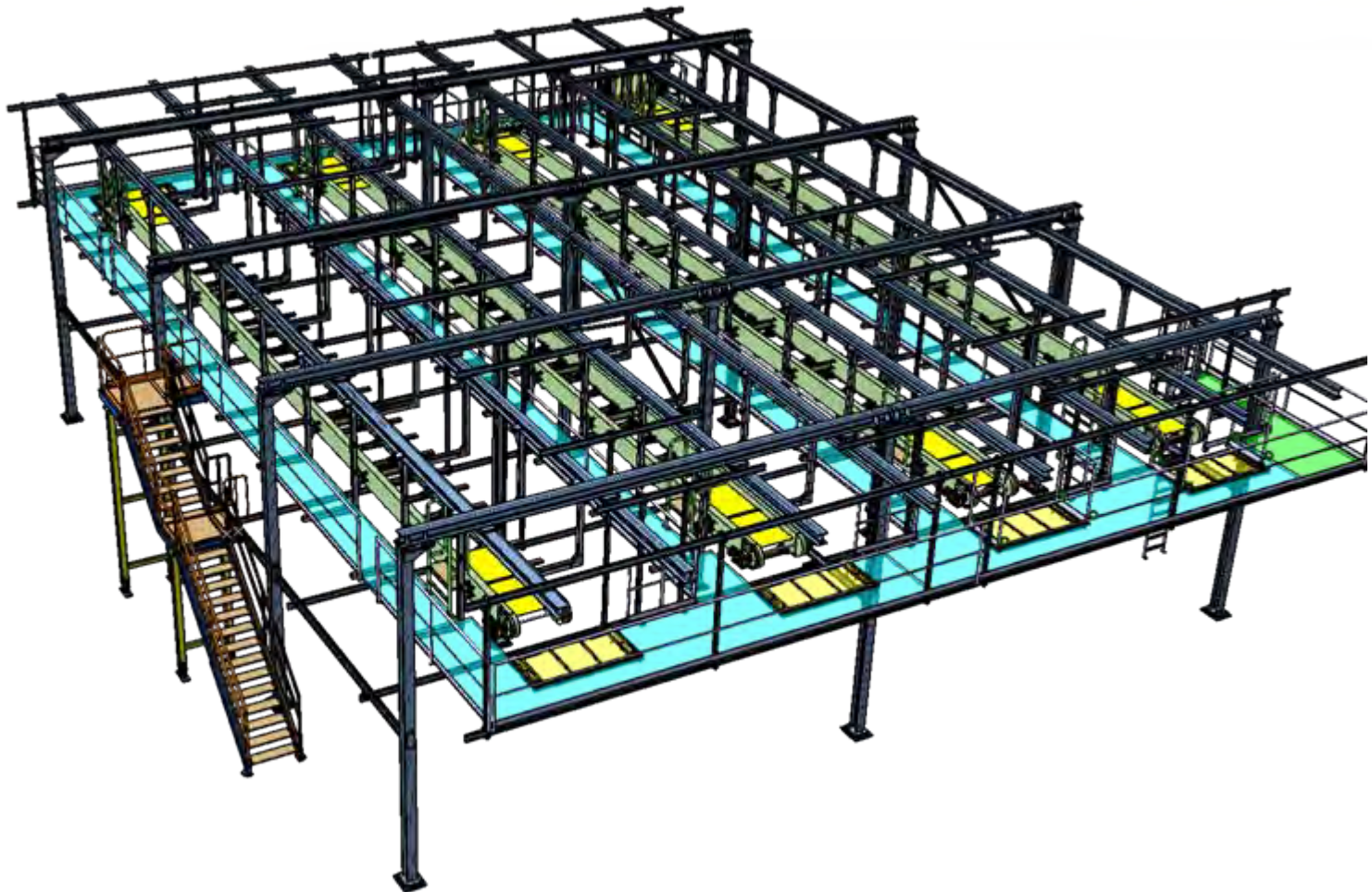
Application example 1

Steel construction mounted on pillars



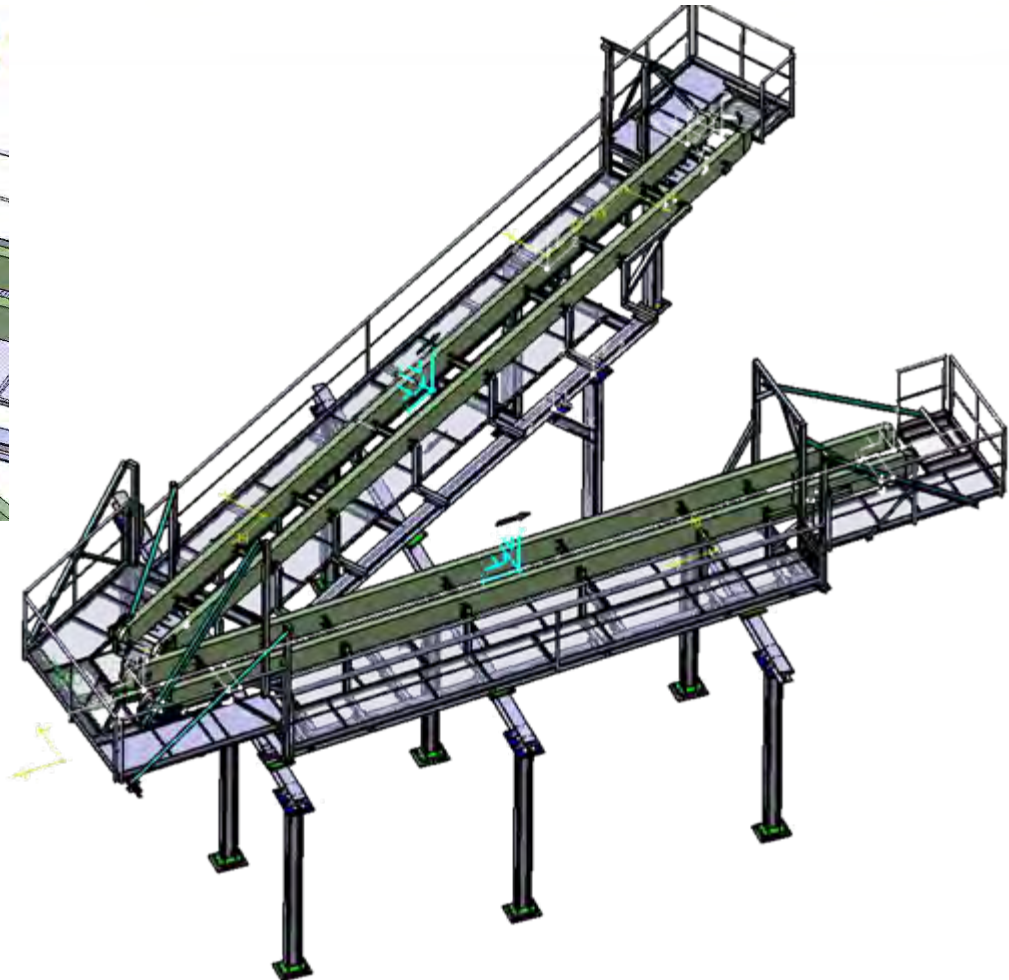
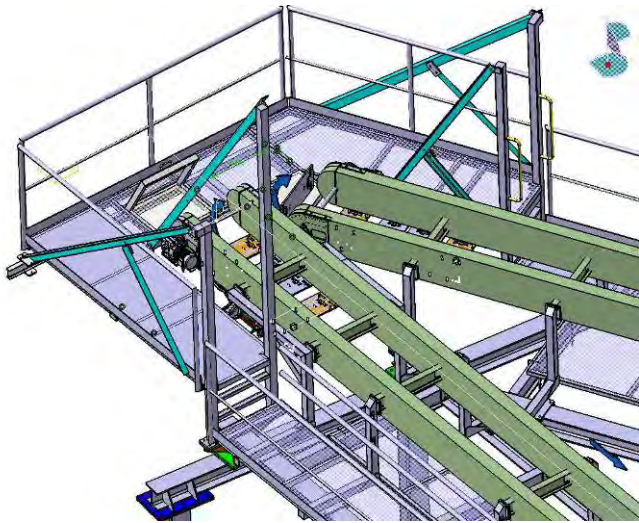
Application example 2

Complete system with steel construction



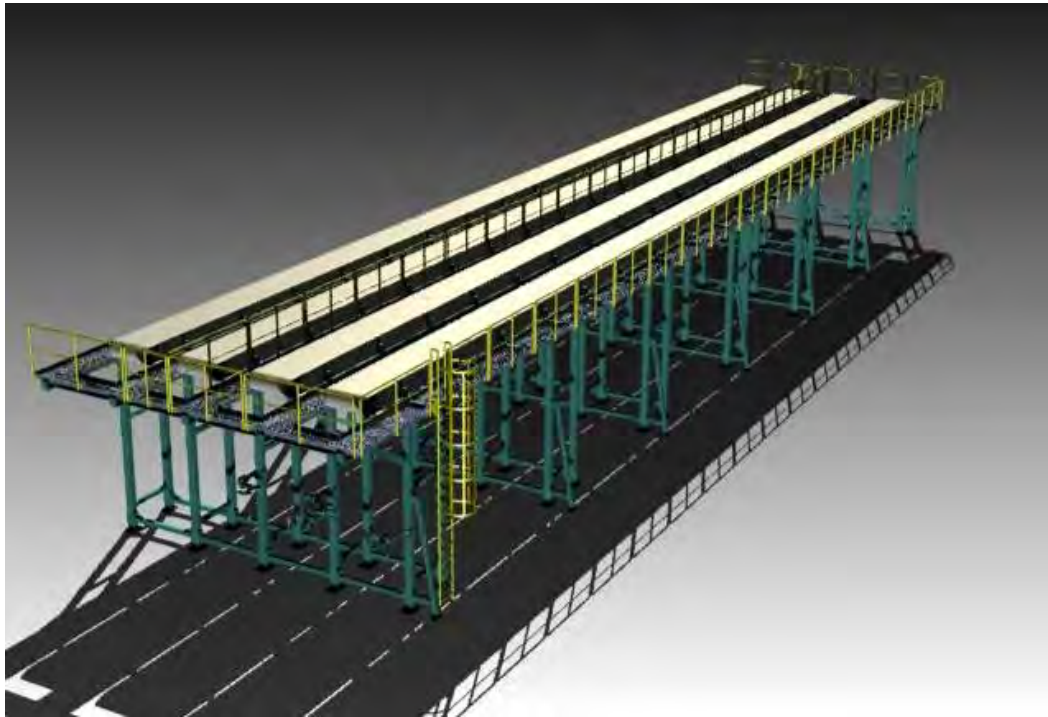
Application example 3

Belt in angular arrangement



Application example 4

Accumulating conveyor of 40 m in length



Development

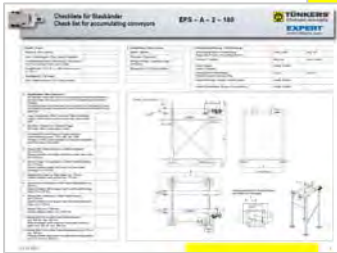
Customer

Offer

Development /
Check lists

Simulation

Approval



Construction
3D

Details
Construction

Assembly

Procurement
Order-related
components

Development

Check list example



Checkliste für Staubänder Check list for accumulating conveyors

EFS – A – 2 – 180

All relevant project details are defined on the basis of the check list

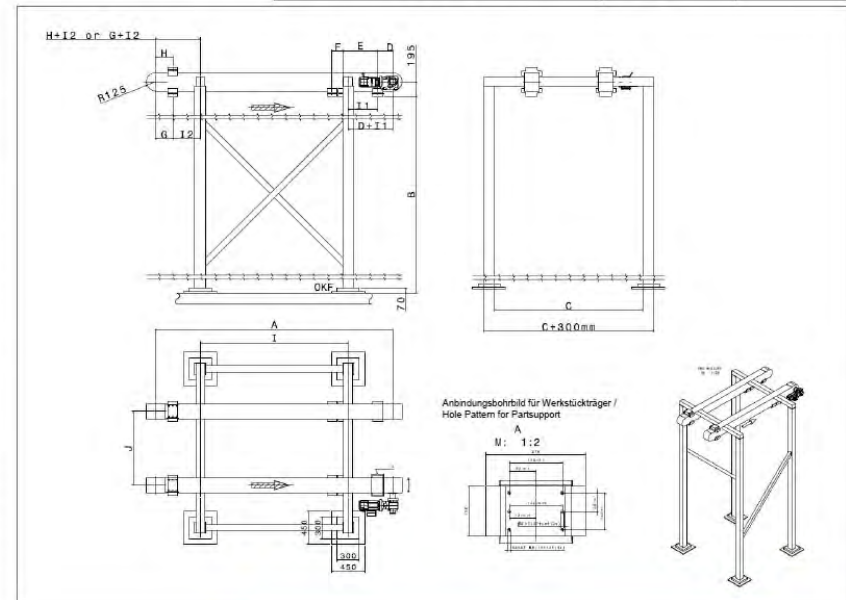
- ⇒ Construction specifications
- ⇒ Specifications for procurement of project-specific components

1. Projekt / Project	
• Endkunde / End customer	
• Werk / Aufstellungsort / Plant / place of installation	
• zu beförderndes Bauteil: Bezeichnung / Teilenummer / Part to be conveyed: Name / part number	
• Hauptabmaße Teil (H / B / L) / Main dimensions part (H / W / L)	
• Bauteilgewicht / Part weight	
• AVO / Stationsnummer / AVO / station number	

2. Lieferumfang / Delivery scope	
• Elektrik / Electrics	
• Pneumatik / Pneumatics	
• Montage Stahlbau / Assembly of steel construction	
• Montage vor Ort / On-site installation	


3. Technische Ausführung / Technical design			
• Anflansseite Motor in Förderichtung / Flange side of motor in transporting direction	rechts / right		links / left
• Transport / Transport	oben / top		unten / bottom
• Anzahl Stopper / Number of stoppers	Anzahl / Number		
• Schutzhaube mit Pendelklappe / Protective hood with pendulum-flap	ja / yes		nein / no
• Anzahl Pufferplätze / Number of buffer stations	Anzahl / Number		
• Anzahl Rücklaufplätze / Number of return stations	Anzahl / Number		

4. Hauptabmaße / Main dimensions	
Die folgenden Grundmaße sind bei der Auslegung der Expert-Stauförderer zu berücksichtigen, bitte nennen Sie uns die für Ihre Anwendung erforderlichen Sollmaße. The following basic dimensions are to be considered as to the design of Expert accumulating conveyors, please state the nominal dimensions required for your application.	
A. Länge / Achsabstand, Mitte Umlenkopf, Mitte Antriebskopf Length / centre distance, centre angular head, centre power head	
B. Bandhöhe, Fußboden bis Oberkante Wagen Belt height, floor to upper edge of carrier	
C. Durchlaufbreite (Empfehlung im Projektumfang auf Vereinfachung achten) 400 / 600 / 800 / 1000 Through-put width (recommendation to ensure standardisation within the scope of the project)	
D. Abstand Mitte Palette Entnahme zu Mitte Antriebskopf (min. 200 mm) Distance between centre pallet unloading to power head centre (min. 200 mm)	
E. Abstand Stopper Vorverzeiler und Mitte Palette Entnahme (min. 470 mm) Distance between stopper pre-isolator and centre pallet unloading (min. 470 mm)	
F. Abstand Mitte Wagen zu Mitte Wagen (min. 150 mm) Distance between carrier centres (min. 150 mm)	
G. Abstand Mitte Umlenkopf zu Mitte Palette Beladestation (min. 230 mm) Distance between centre angular head to centre pallet loading station (min. 230 mm)	
H. Abstand Mitte Umlenkopf zu Mitte Palette Rücklauf (min. 230 mm) Distance between centre angular head and centre pallet return motion (min. 230 mm)	
I. Abstand Füße (min. 2.000 mm) Distance between stands (min. 2.000 mm)	
I.1. Abstand Mitte Fuß zu Mitte Palette Entnahmestation (min. 400 mm, max. 600 mm) Distance between centre stand and centre pallet unloading station (min. 400 mm, max. 600 mm)	
I.2. Abstand Mitte Fuß zur Mitte Palette Beladestation (min. 370 mm, max. 600 mm) Distance between stand centre and pallet centre loading station (min. 370 mm, max. 600 mm)	



31.10.2011

1



TÜNKERS Conveying Technology

The complete programme
for body-in-white automation



- The current programme offers you tailor-made solutions for almost any application in the field of body-in-white conveying technology
- Our teams at TÜNKERS, EXPERT-TÜNKERS, TÜNKERS-Ibericá APM and our international sales teams would be happy to assist you, with regard to design and conception

TÜNKERS Conveying Technology

The complete programme for body-in-white automation



Your contact for TÜNKERS in Europe

TÜNKERS Maschinenbau GmbH

Am Rosenkothen 4-12
DE-40880 Ratingen
Telephone +49 (0) 2102-45 17-0
E-mail info@tuenkers.de

TÜNKERS Ibericá S.L.

Team APM
c/Conflent, Nave 24
Poligono Ind. pomar de dalt
08916 Badalona (Barcelona)
Spain
Telephone +34 (93) 3 95 28 27
E-mail tunkers@tunkersiberica.com

Internet

www.tuenkers.de
www.tuenkers-foerdertechnik.de
www.tuenkers-conveying.com

