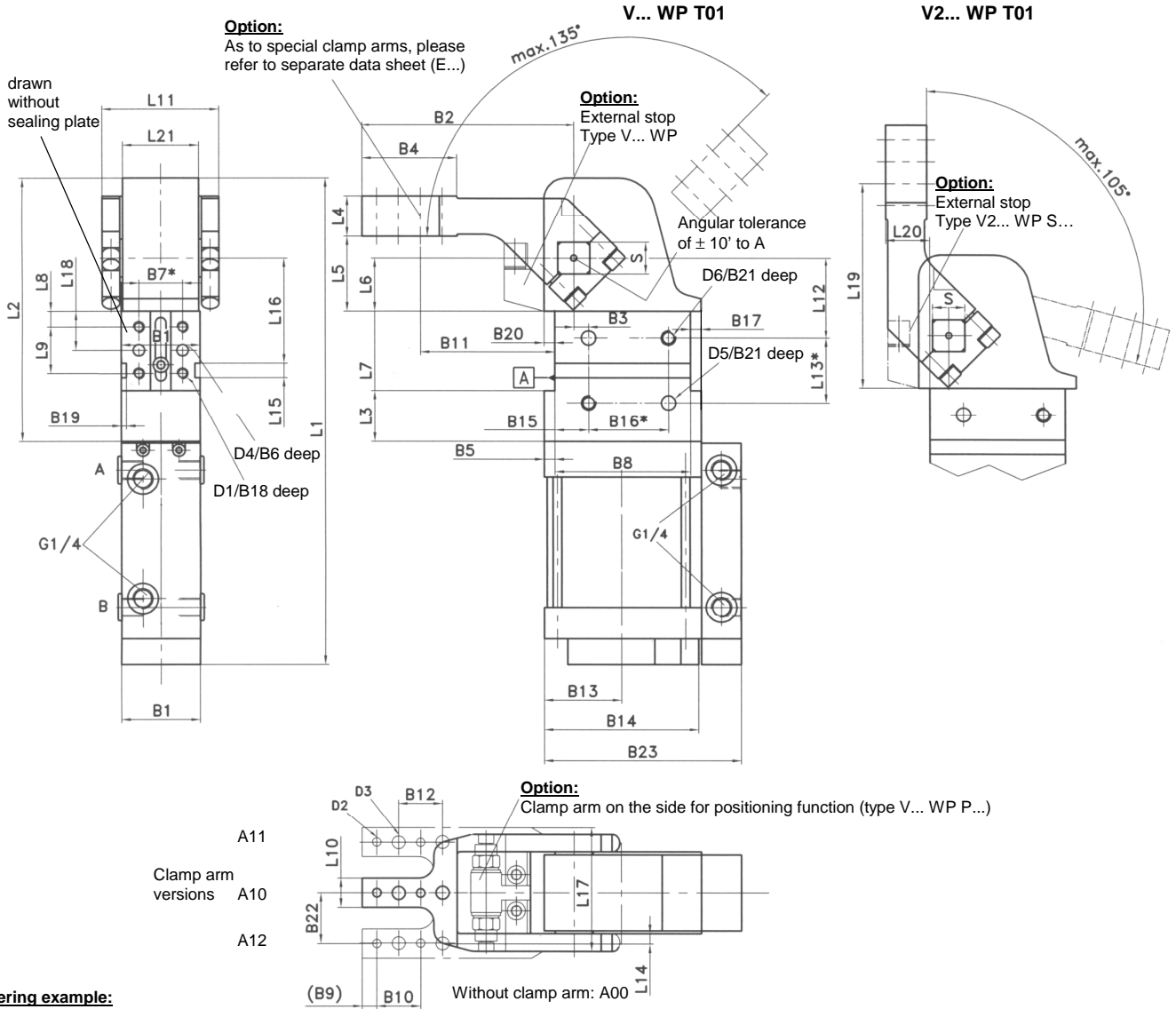


# Vario Clamp - Waterproof

Protection class IP 65, stepless adjustable opening angle

# V... WP T01



**Ordering example:**  
V 50 WP S P A10 T01

V: Type  
50: Corresponds to piston Ø  
WP: Waterproof  
S: **Option:** External stop  
P: **Option:** Positioning function  
A10: Clamp arm version  
T01: Control module

**Opening angles:**  
Continuously adjustable in the range from  
45°-135° (type V...)  
45°-105° (type V2...).

Medium: Air, max. 6 bar, operation permitted with oil-free air.  
\*Tolerance for dowel holes ± 0.02, for threaded holes ± 0.1.

**Ordering example Tünkerscontrol module:**

...T01 24 V inductive sensing, 1 output with integrated LEDs

**Attention!**

External throttle check valves must be provided on assembly. They are not included in the scope of delivery!

Type	Holding moment max.	Clamping moment at 5 bar	Corresponds to piston Ø (mm)	Weight ~ (kg)	B1	B2	B3 ±0.05	B4	B5	B6	B7*	B8 ±0.1	B9	B11 ±0.1
V/V2 50 WP	800 Nm	160 Nm	50	4.3	48	144	10	65	4.5	10	30	93	9	92
V/V2 63 WP	1500 Nm	380 Nm	63	5.7	54	144	10	65	7.5	10	30	93	9	92
V/V2 80 WP	2500 Nm	800 Nm	80	17	76	179	15	64	8	12	50	134	9	119

Type	B12 ±0.2	B13	B14	B15 ±0.1	B16*	B17	B18	B19	B20	B21	B22 ±0.1	B23	D1	D2 H7	D3	D4 H7	D5 H7	D6	L1	L2
V/V2 50 WP	30	47	92	23	50	4.5	11	3.5	9.5	12	34	114	M8	6	9	8	10	M10	345	161.5
V/V2 63 WP	30	54	107	23	50	7.5	11	3.5	12.5	12	37	129	M8	6	9	8	10	M10	367	171.5
V/V2 80 WP	30	70	140	36	70	8	15	3.5	20	13	50.5	162	M10	6	9	8	12	M12	554	270

Type	L3	L4 ±0.1	L5 ±0.2	L6 ±0.05	L7 ±0.1	L8 ±0.1	L9 ±0.1	L10	L11	L12 ±0.05	L13*	L14 ±0.1	L15 N9	L16 ±0.05	L17	L18 ±0.05	L19 ±0.1	L20 ±0.2	L21	S h9
V/V2 50 WP	18.5	28	51.5	36.5	55	11	32	20	68	55	45	10	12	71.5	78	27	141.5	30	45	19
V/V2 63 WP	23.5	28	51.5	36.5	55	11	32	20	78	55	45	10	12	71.5	78	27	141.5	30	52	22
V/V2 80 WP	55	35	70	50	80	15	50	25	108	65	75	12.5	12	96.5	117	40	190	34	74	30