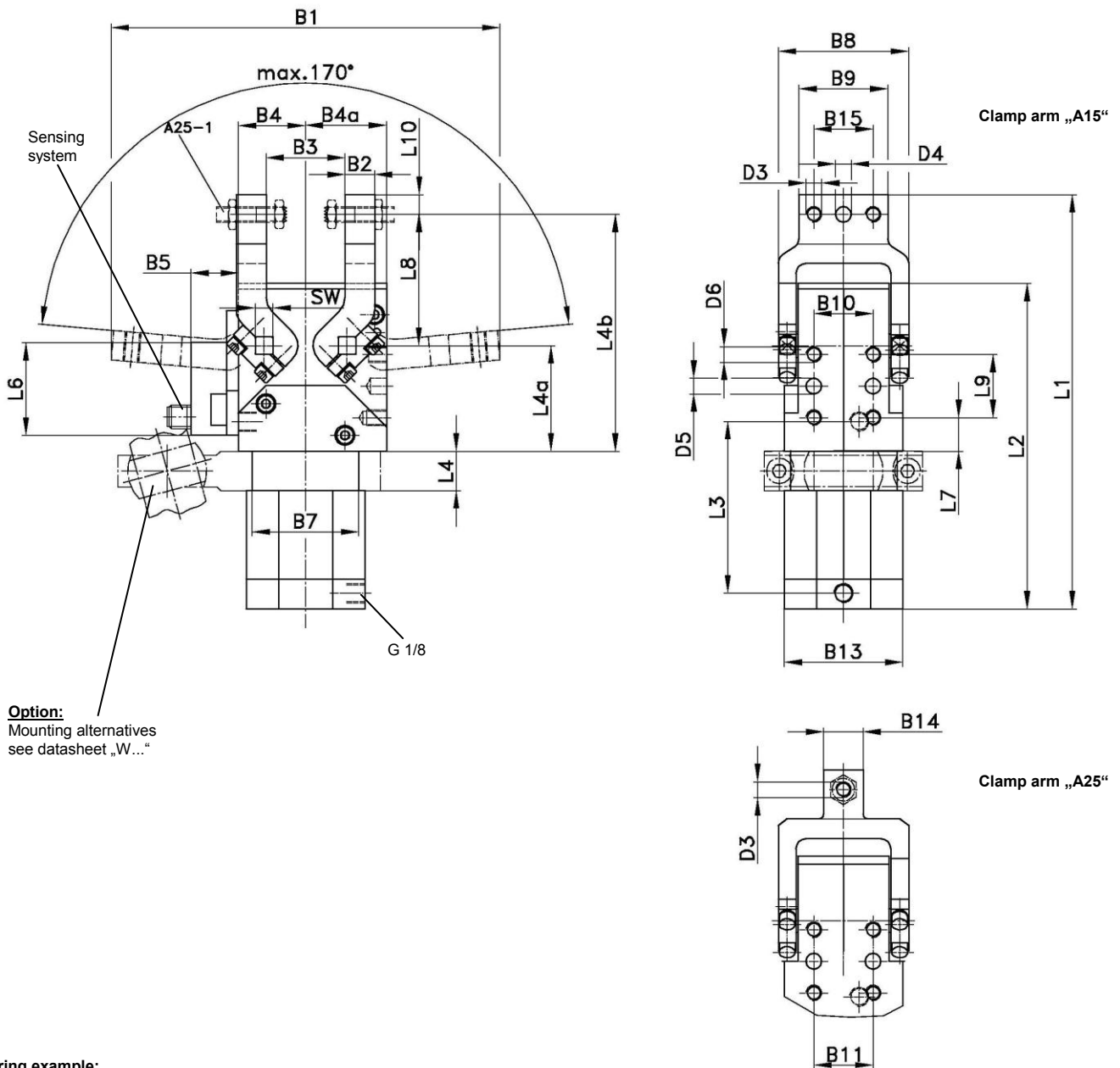


Pneumatikgreifer

double arm version, totally enclosed,
knee lever locked end position

APG 40.1 BR2 AS A.5



Option:
Mounting alternatives
see datasheet „W...“

Ordering example:

APG 40.1 BR2 AS A15 W 25 T12 45°

APG ... BR2: Type
40.1: Piston Ø
AS: Double arm
A15: Clamp arm version
W 25: **Optional:** draw spindle
(see separate data sheet „W...“)
T12: Sensing system
45°: Opening angle (2 x 45°)

Bestellschlüssel Tünkers Abfragesysteme:

...T00 Without sensing
... T12 Inductive sensor 24 V, 1 output
with integrated LED's

Clamp arm versions:

A15: Clamp arm with 3 bore holes
A25-0: Clamp arm with 1 bore hole, without clamping screws
A25-1: Clamp arm with 1 bore hole, with clamping screw

Opening angles (2 x):

45°, 60°, 75°, 85°, other versions on request!

Accessories:

Latch-tightening screw, article number 446244

* Tolerance for dowel holes ± 0.02, for threaded holes ± 0.1.

Attention!

External throttle check valves must be provided on assembly.
They are not included in the scope of delivery.

Type	Clamping force (N) at 5 bar	Working pressure (bar) in oil-free air	Maximum pressure (bar) in oil-free air	Connection (G)	Opening and Closing time (s)	Weight (kg)	L1	L2	L3	L4	L4a	L4b	L6
APG 40.1 BR2 AS	600	5	6	1/8	1	2,0	210	166.5	87	20	53,5	120	40.5

Type	L7 ±0,1	L8	L9 ±0,1	L10 -0,05	B1	B2	B3	B4	B4a	B5	B7	B8	B9	B10 ±0,1	B11 -0,02	B13	B14	B15	D3	D4 H7	D5 H7/8 tief	D6 10 tief	SW
APG 40.1 BR2 AS	17	66,5	32	10	195	15	40	34	41	24	54	66	45	30	30	60	20	30	M8	8	8	M8	9