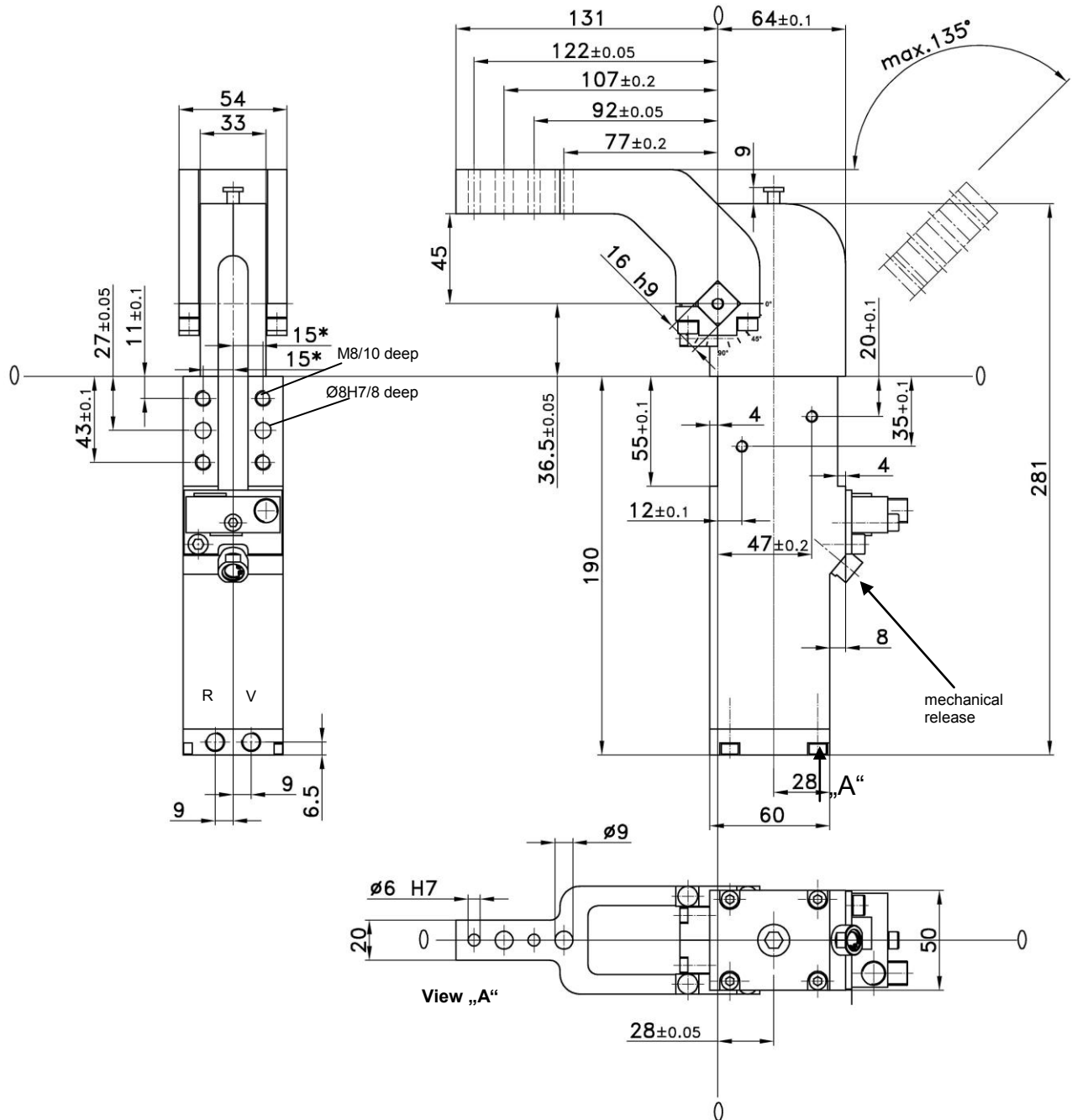


ALPHA Clamp

With power curve, adjusting function and mechanical safety brake, connection compatible to size 50/63, stepless adjustable opening angle

APH 40.5 B A60 10° - 135°



Ordering example:

APH 40.5 B A60 T12

APH: Type
40.5: Piston Ø
B: Mechanical safety brake
A60: Clamp arm version
T12: Sensing system

Ordering example Tünkens sensing systems:

... T00 Without sensing
... T12 Inductive sensor 24 V ,1 output with integrated LED's

Attention:

External throttle check valves must be provided on assembly. They are not included in the scope of delivery!

Constant clamping moment in the angle range of ± 1.2°.

*Tolerance for dowel holes ± 0.02, for threaded holes ± 0.1.

**when the brake is activated

Medium: Air, max. 6 bar, operation permitted with oil-free air.

Type	Holding torque max.**	Clamping moment at 5 bar **	According to piston Ø (mm)	Weight ~ (kg)
APH 40.5 B	190 Nm	120 Nm	40	2.8