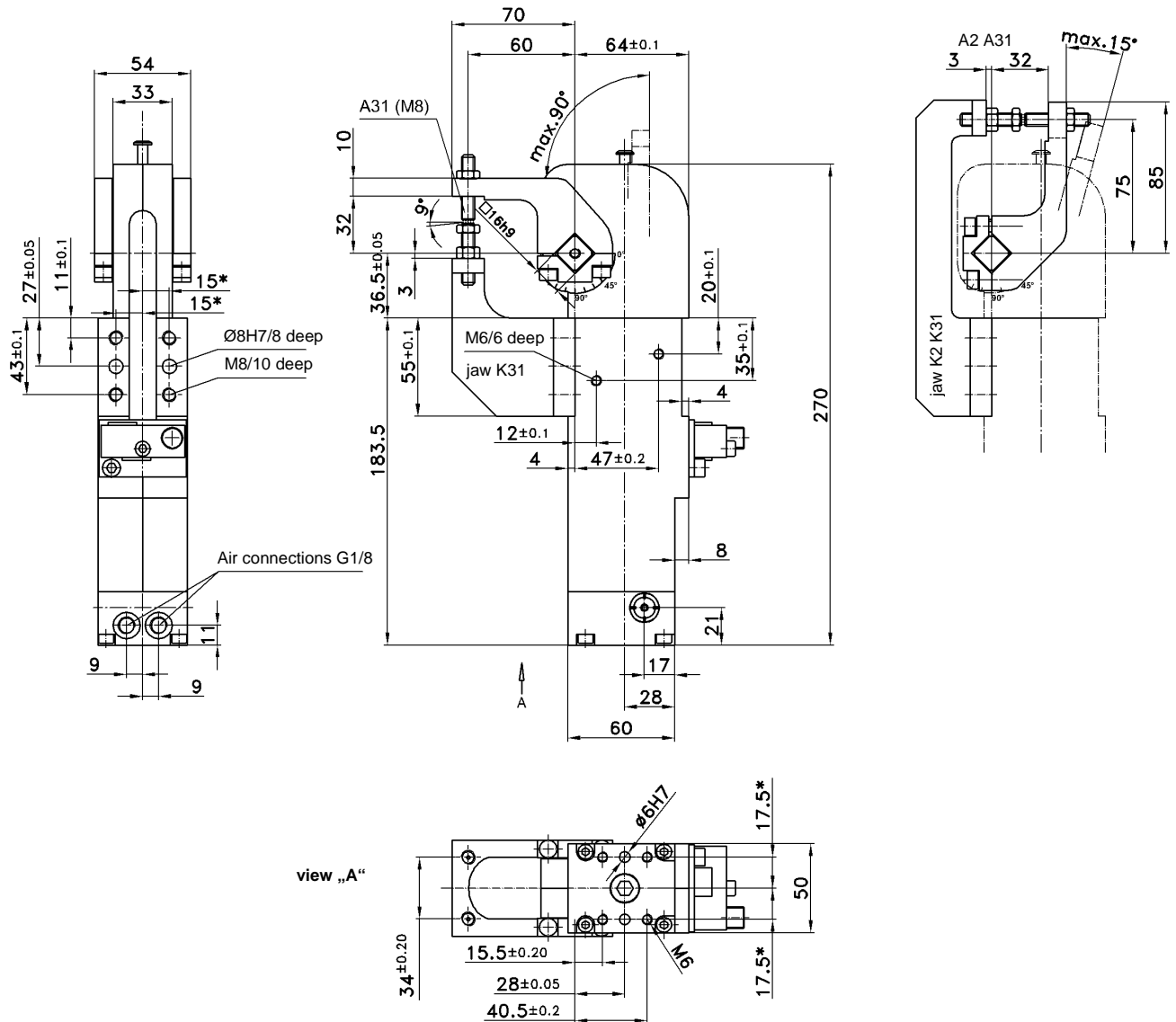


ALPHA-Clamp

With power curve and adjusting function, pneumatic self-locking type, connection compatible to size 50/63, stepless adjustable opening angle

APH 40.5 H BR2 A3..

10° - 90°



Ordering example:

APH 40.5 H BR2 A31 T12

APH... BR2: Type
 40.5: Piston Ø 40
 H: Pneumatic self-locking type
 A31: Clamp arm version
 T12: Sensing system

Ordering example Tünkers sensing systems:

... T00 Without sensing
 ... T12 Inductive sensor 24 V,
 1 output with integrated LED's

Ordering codes for clamp arms:

A30: Arm and jaw without clamping screws
 A31: Arm and jaw with clamping screws
 A32: Arm and jaw with plastic contour plates
 A30.0: Clamp arm without clamping screws / without jaw
 A31.0: Clamp arm with clamping screws / without jaw
 A32.0: Clamp arm with plastic contour piece / without jaw

Attention:

External throttle check valves must be provided on assembly. They are not included in the scope of delivery!

* Tolerance for dowel holes ± 0,02, for threaded holes ± 0.1.

Medium: Air, max. 6 bar, operation permitted with oil-free air.

Type	Holding torque max.	Clamping moment at 5 bar	corresp Piston Ø (mm)	Weight ~ (kg)
APH 40.5	120 Nm	120 Nm	40	2,40