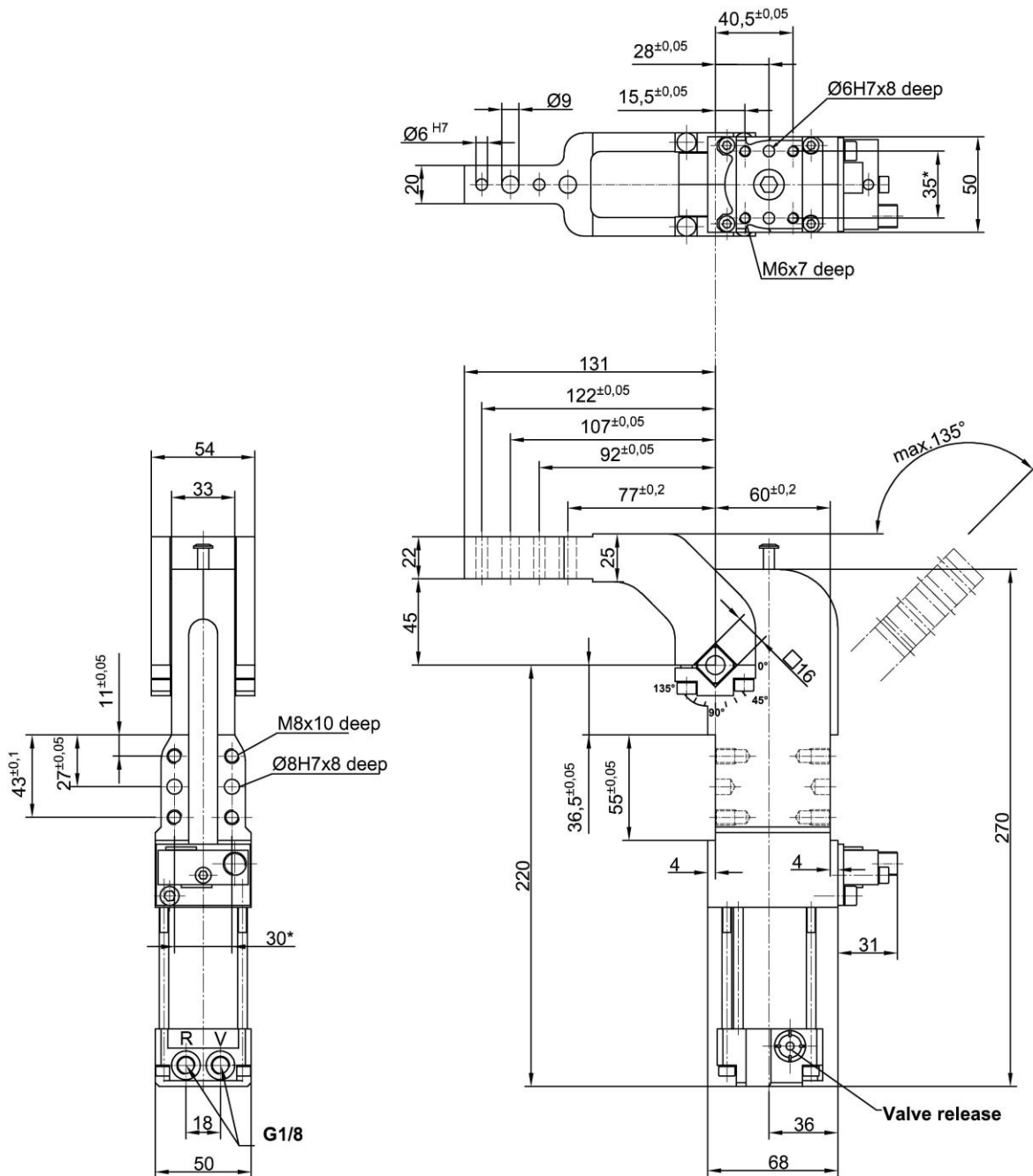


ALPHA-Clamp

Lightweight design, with power curve and adjusting function, pneumatic self-locking type, connection compatible to size 50/63, stepless adjustable opening angle

APH 40.5 H BR2 LW A60

10° - 135°



Ordering example:

APH 40.5 H BR2 LW A60 T12

APH 40.5.....BR2: Type
 H: Pneumatic self-locking type
 LW: Lightweight design
 A60: Clamp arm version
 T12: Sensing system

Ordering example Tünkers sensing systems:

... T00 Without sensing
 ... T12 Inductive sensor 24 V, 1 output with integrated LED's

Attention:

External throttle check valves must be provided on assembly. They are not included in the scope of delivery!

Constant clamping moment in the angle range of $\pm 1.2^\circ$.

*Tolerance for dowel holes ± 0.02 , for threaded holes ± 0.1 .

Medium: Air, max. 6 bar, operation permitted with oil-free air.

Type	Holding torque max.	Clamping moment at 5 bar	Corresp. piston Ø (mm)	Weight ~ (kg)
APH 40.5 H BR2 LW	120 Nm	120 Nm	40	1.8