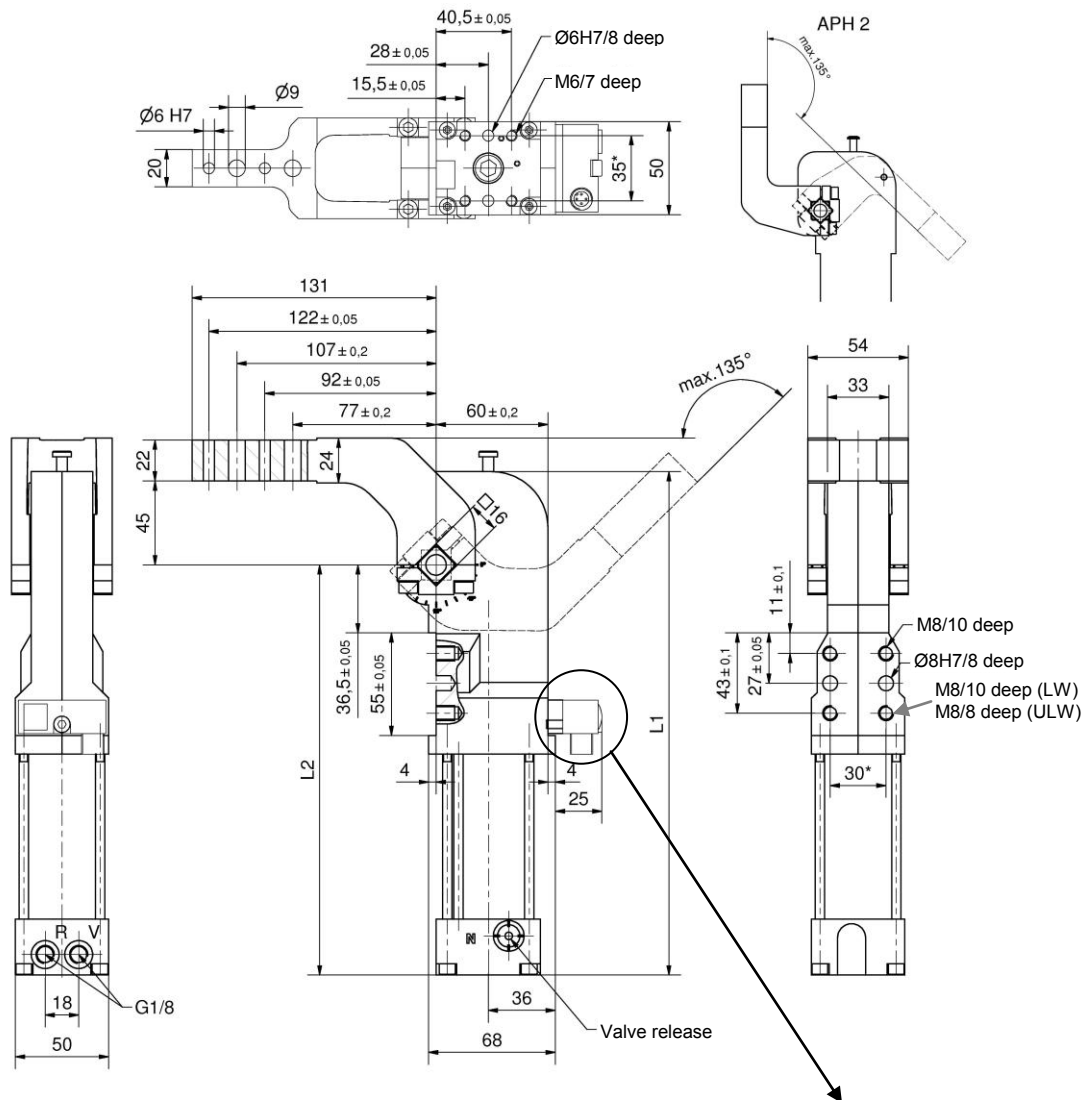


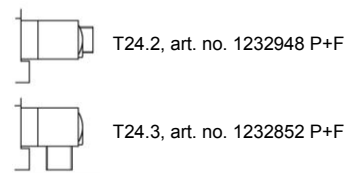
ALPHA-Clamp

Lightweight design, with power curve and adjusting function, pneumatic self-locking type, connection compatible to size 50/63, stepless adjustable opening angle

APH 40.5 H BR5 LW / ULW A60



Plug adapter (spare parts):



Ordering example:

APH 40.5 H BR5 LW A60 T24.2

APH...	BR5:	Type
40.5:	H:	Corresp. piston Ø
LW:	A60:	Pneumatic self-locking type
T24.2:		Lightweight design
		Clamp arm version
		Sensing system

Attention:

External throttle check valves must be provided on assembly. They are not included in the scope of delivery!

Constant clamping moment in the angle range of $\pm 1.2^\circ$.

*Tolerance for dowel holes ± 0.02 , for threaded holes ± 0.1 .

**as shown

Medium: Air, max. 6 bar, operation permitted with oil-free air.

Ordering example Tünkens sensing systems, two-piece:

...T24.1	Without plug adapter
...T24.2	With straight plug adapter (standard)
...T24.3	With plug adapter 90° angle

Type	Holding torque max.	Clamping moment at 5 bar	Corresp. piston Ø (mm)	Weight** ~ (kg)	L1	L2
APH 40.5 H BR5 LW	380 Nm	120 Nm	40	1.8	270	220
APH 40.5 H BR5 ULW	380 Nm	120 Nm	40	1.75	249.5	199.5