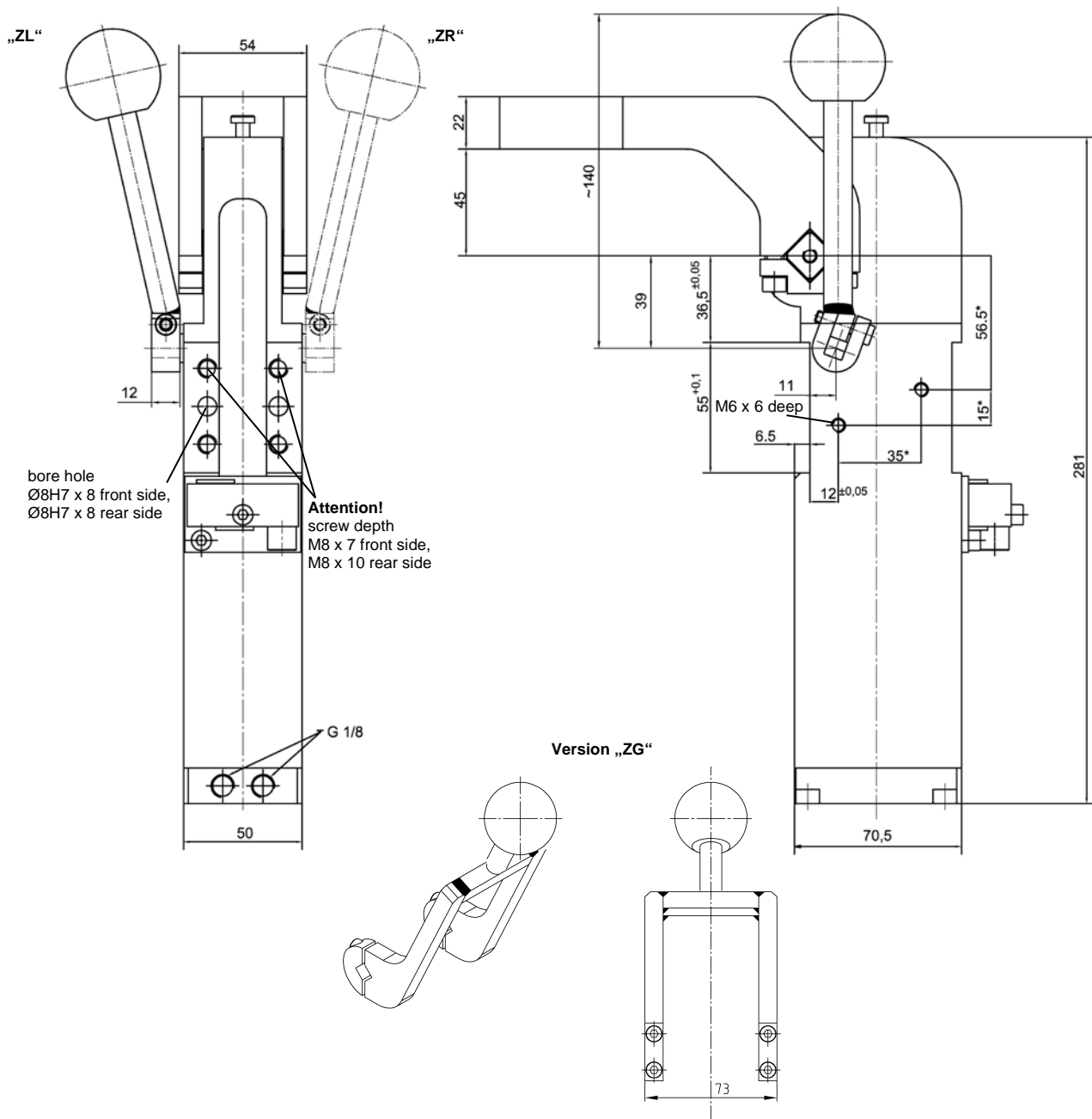


ALPHA Clamp with hand lever

Knee lever mechanics toggle locked,
connection compatible with size 50/63

APH 40.5 V Z./ZG A60

15° - 110°



Ordering example:

APH 40.5 V ZL A60 T12

APH: Type
40.5: Piston Ø
V: Knee lever locked
ZL: With hand lever left
("ZR" = right)
A60: Clamp arm version
T12: Sensing system

Ordering example hand lever complete:

Hand lever complete left = 350426
Hand lever complete right = 350405

Attention!

External throttle check valves must be provided on assembly.
They are not included in the scope of delivery.

Ordering example Tünkens sensing systems:

...T00 Without sensing
...T12 Inductive sensor 24 V, 1 output
with integrated LED's

Please refer to the relevant data sheet for more technical information:
„APH 40.5 H BR2 A60“.

*Tolerance for dowel holes ± 0.02, for threaded holes ± 0.1.

Type	Holding torque max.	Clamping moment at 5 bar	Operation pressure (bar) with oil-free air	Maximum pressure (bar) with oil-free air	Piston Ø (mm)	Weight ~ (kg)
APH 40.5..	380 Nm	120 Nm	5	6	40	3.5