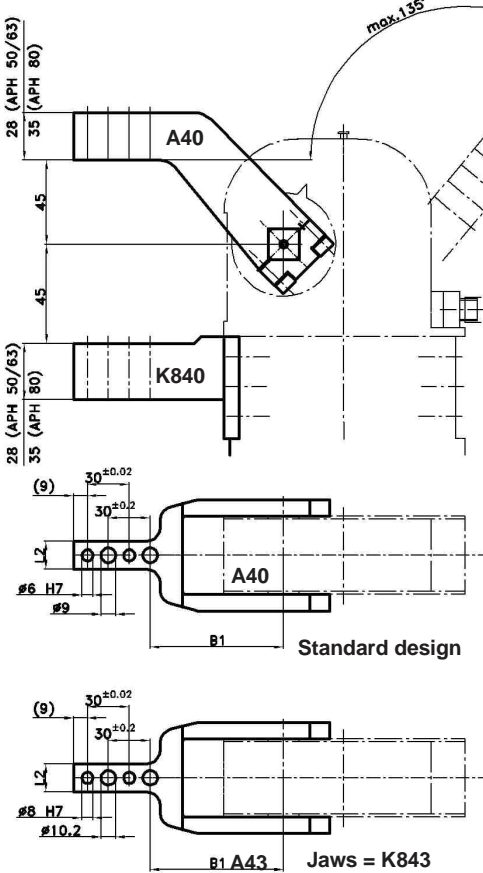


Clamp Arms and Jaws for Alpha Clamps

Status: 15/09/2003

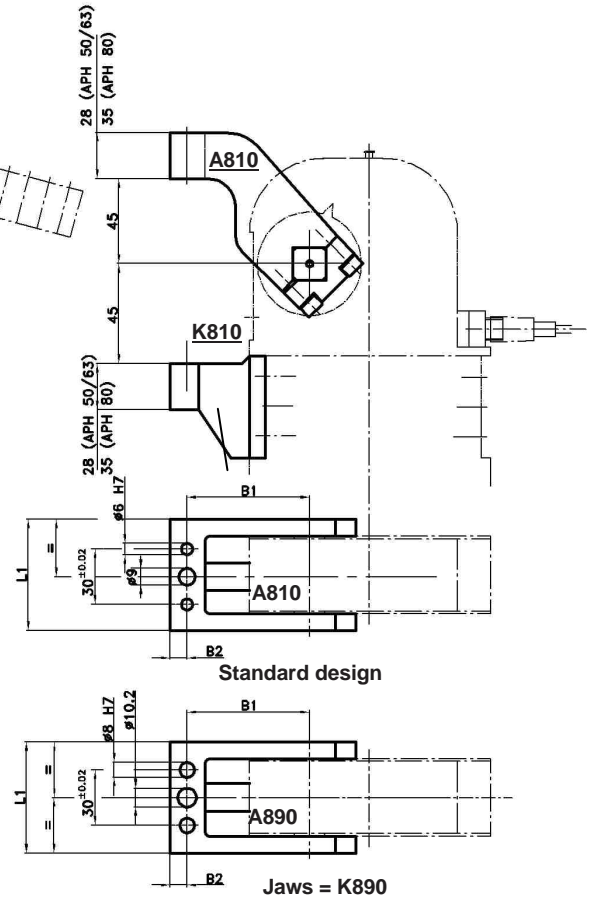
APH2...

Clamp arm (A..) jaw (K..) for standard arms



Version for contour wheel isolation

Clamp arm (A..) jaw (K..) for cross contours



Version for contour wheel isolation

Further technical information on ALPHA clamps

see separate data sheets APH... ; APH 40

Order example clamp arm:

A40/50

A40: Clamp arm type
50: Clamp type

Order example jaw:

K840/50

K840: Jaw type
50: Clamp type

Order example for complete clamp:

APH 50 A40/K840

APH 50: Clamp type
A40: Clamp arm type
K840: Jaw type

Type	B1 ±0.1	B2	L1	L2
APH 50...	90	10	68	20
APH 63...	90	10	78	20
APH 80...	125	15	108	25

Index	Modification	Name	Date
a	Clamp variant type APH2	Sr.	22/04/04

*Tolerance for stud boreholes: ± 0.02, for threaded holes: ± 0.1

Medium: Air, max. 8 bar, operation with oil-free air admissible.

Engineering drawings 1:1 and CAD data available.
Subject to technical changes.



TUNKERS®

www.tuenkers.de ♦ info@tuenkers.de

Phone: +49 2102 4517-0 ♦ Fax: +49 2102 4517-9999