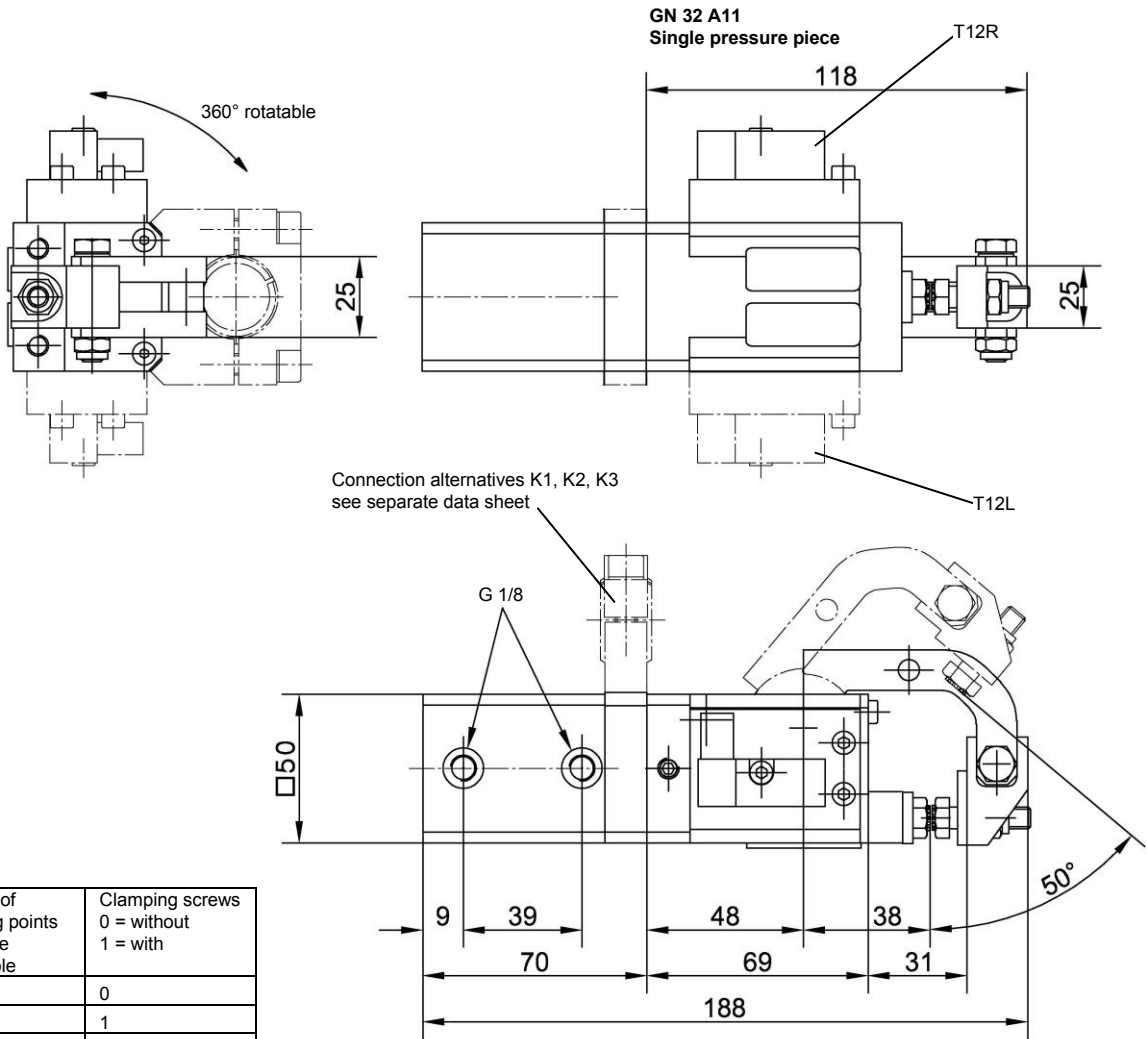


Pneumatic Gripper

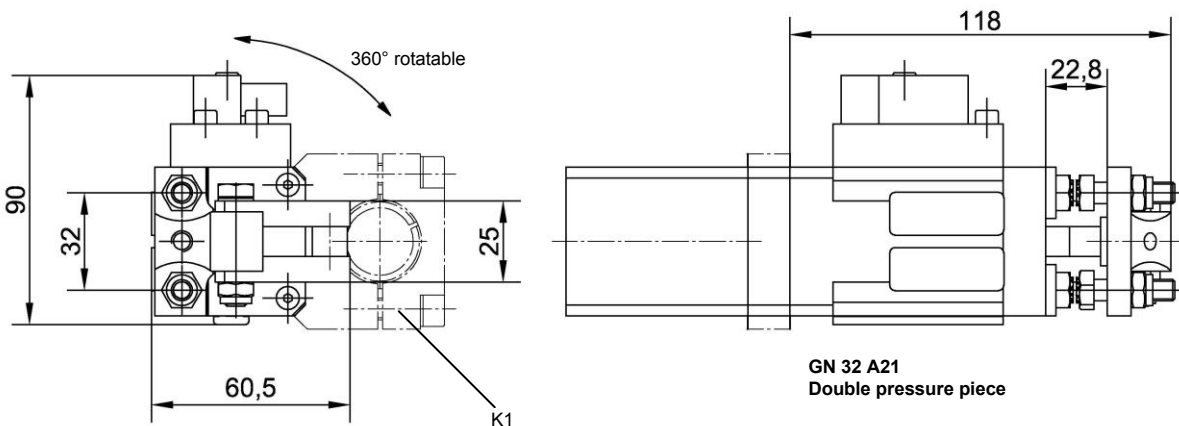
with mechanical end position lock

GN 32



Pressure pieces:

	Number of clamping points 1 = single 2 = double	Clamping screws 0 = without 1 = with
A10	1	0
A11	1	1
A20	2	0
A21	2	1



Ordering example:

GN 32 A21 K1 T12R 50°

GN 32: Type
 A21: Double pressure piece
 incl. clamping screws
 Connection
 K1: Sensing right (Optional: left)
 with LED's
 T12R: Sensing right (Optional: left)
 with LED's
 50°: Opening angle (standard)

Standard opening angle:

50°

Optional opening angles:

15°, 30°, 45°

Attention: The actual opening angle can be larger by up to 4° depending on arm load and operating pressure.

Clamping force at 5 bar: 800 N
 Gripping force: 150 N
 Holding force: 800 N

Attention:

When used on robot gripper systems, a minimum of 2 pneumatic grippers must be used regardless of the load case.

Weights in kg:

	GN 32	A11	A21	K1	K2	K3
Pneumatic Gripper	1.3					
Pressure piece		0.12	0.19			
Connection				0.18	0.28	0.22

e.g. GN 32 A11 K1 = 1.6 kg