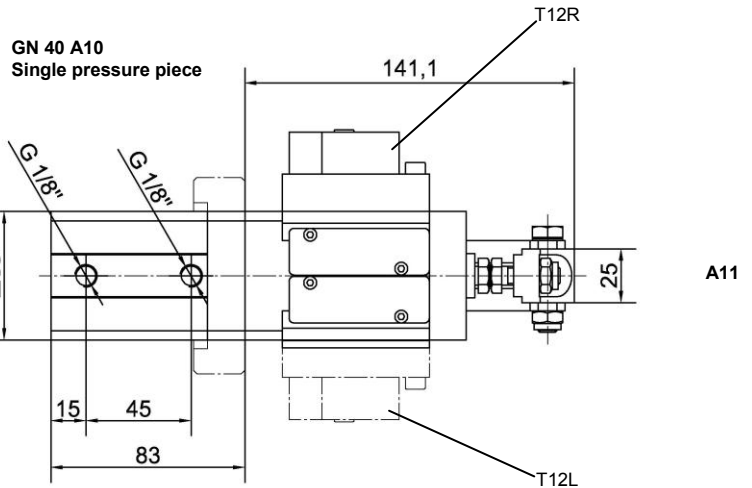
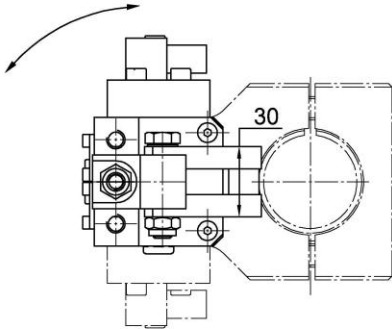


Pneumatic Gripper

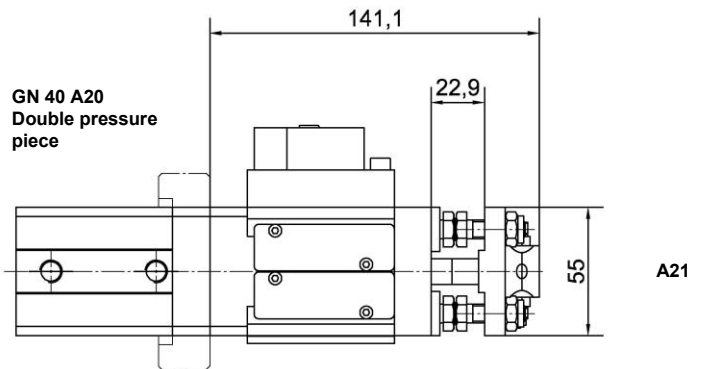
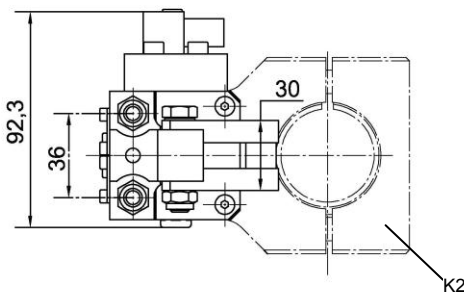
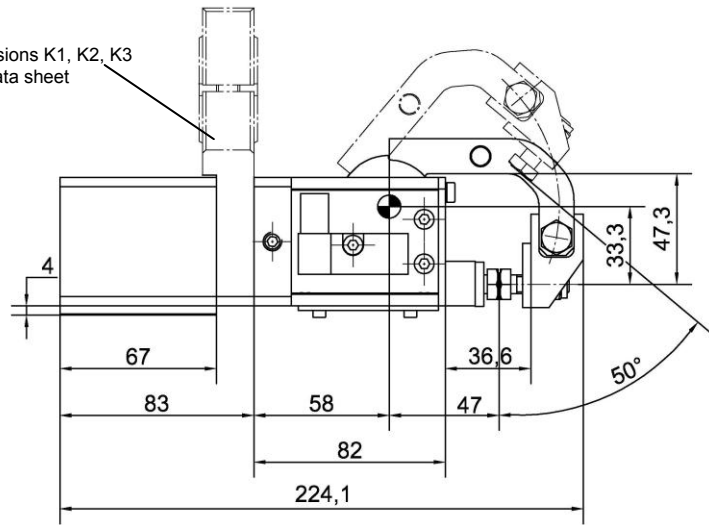
with mechanical end position lock

GN 40

head 360° rotatable



Connection versions K1, K2, K3
see separate data sheet



Ordering example:

GN 40 A21 K1 T12R 50°

GN 40: Type
A21: Double pressure piece including clamping screws
K1: Connection version
T12R: Sensing right with LED's (Optional: left)
50°: Opening angle (standard)

Standard opening angle:

50°

Optional opening angles:

15°, 30°, 45°

Attention: The actual opening angle can be larger by up to 4° depending on arm load and operating pressure.

Clamping force at 5 bar: 1200 N
Gripping force: 450 N
Holding force: 1000 N

Attention:

When used on robot gripper systems, a minimum of 2 pneumatic grippers must be used regardless of the load case.

Weights in kg:

	GN 40	A11	A21	K1	K2	K3
Pneumatic Gripper	2.0					
Pressure piece		0.15	0.24			
Connection				0.23	0.35	0.27

e.g. GN 40 A11 K1 = 2.38 kg