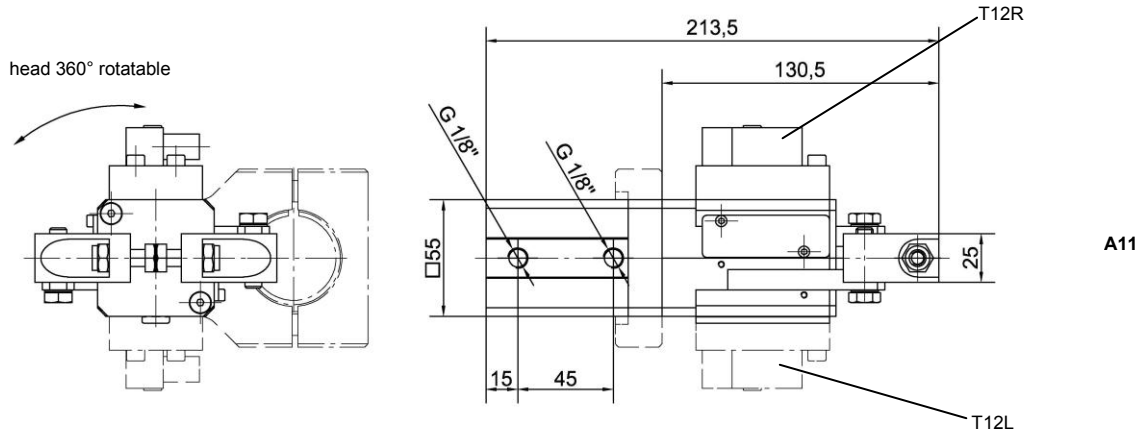
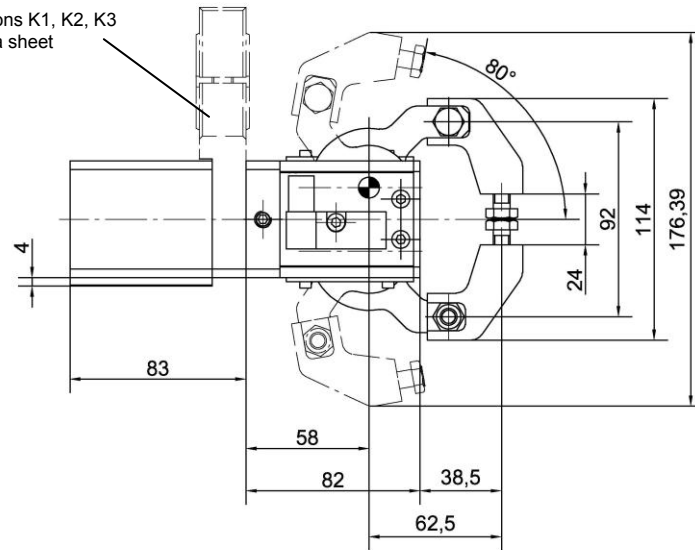


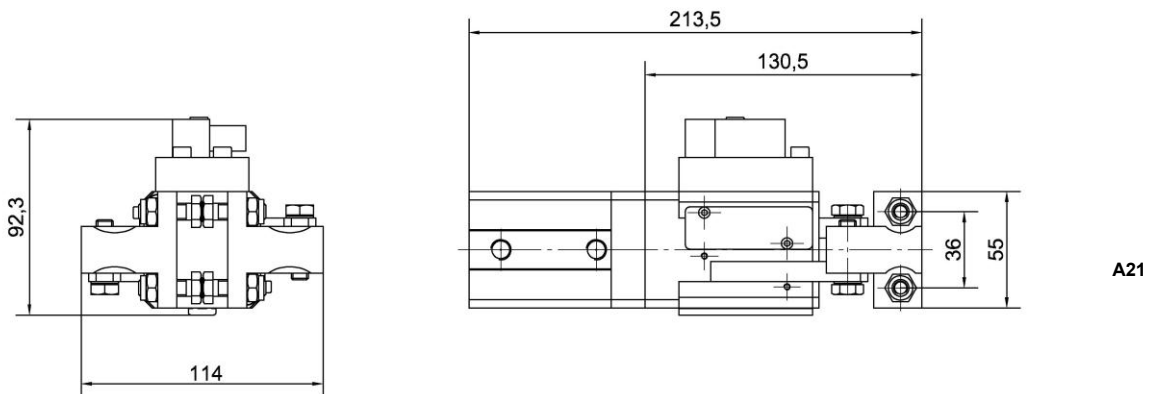
GN 40 AS A10 Single pressure piece



Connection versions K1, K2, K3
see separate data sheet



GN 40 AS A20 Double pressure piece



Ordering example:

GN 40 AS A21 K1 T12R 2x80°

GN 40 AS: Type
A21: Double pressure piece including clamping screws
K1 Connection
T12R Sensing right with LED's (Optional: left)
2x80°: Opening angle (standard)

Standard opening angle:

2x80°

Optional opening angles:

2x15°, 2x30°, 2x45°, 2x60°

Attention: The actual opening angle can be larger by up to 4° depending on arm load and operating pressure.

Clamping force at 5 bar:
approx. 600 N
Holding force: approx. 600 N

Weights in kg:

	GN 40 AS	A11	A21	K1	K2	K3
Pneumatic Gripper	1.8					
Pressure piece		0.33	0.51			
Connection				0.23	0.35	0.27

e.g. GN 40 AS A11 K1 = 2.36 kg