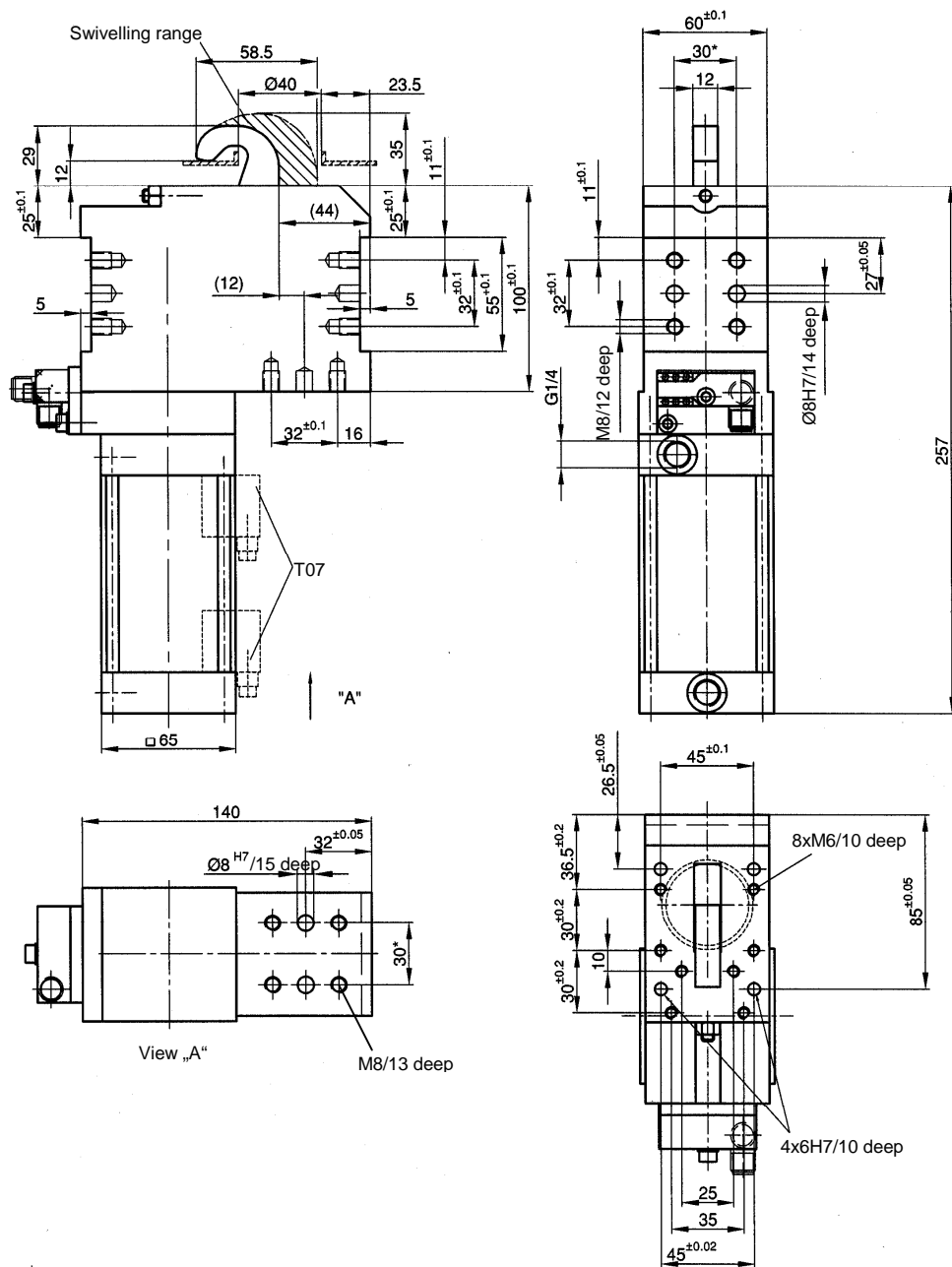


Underbody Clamp

Self-locking type, with swivelling and vanishing hook

K 60 U



Ordering example:

K 60 U T12

K 60 U: Type
T12: Sensing system

**Clamping force at 6 bar: 330 daN
**Holding force: 330 daN
Working pressure: max. 8 bar
Piston Ø: 60 mm
Weight: 3,5 kg

Ordering example Tünkers sensing systems:

...T07 Magnetic piston (for magnetic switches)
...T12 Inductive switch 24 V, 1 output
with integrated LED's

*Tolerance for dowel holes $\pm 0,02$, for threaded holes $\pm 0,1$.

Medium: Air, max. 8 bar, operation permitted with oil-free air.

Maximum load (***) depends on diameter of dowel pin and geometry of the hook.

Attention!

External throttle check valves must be provided on assembly.
They are not included in the scope of delivery!