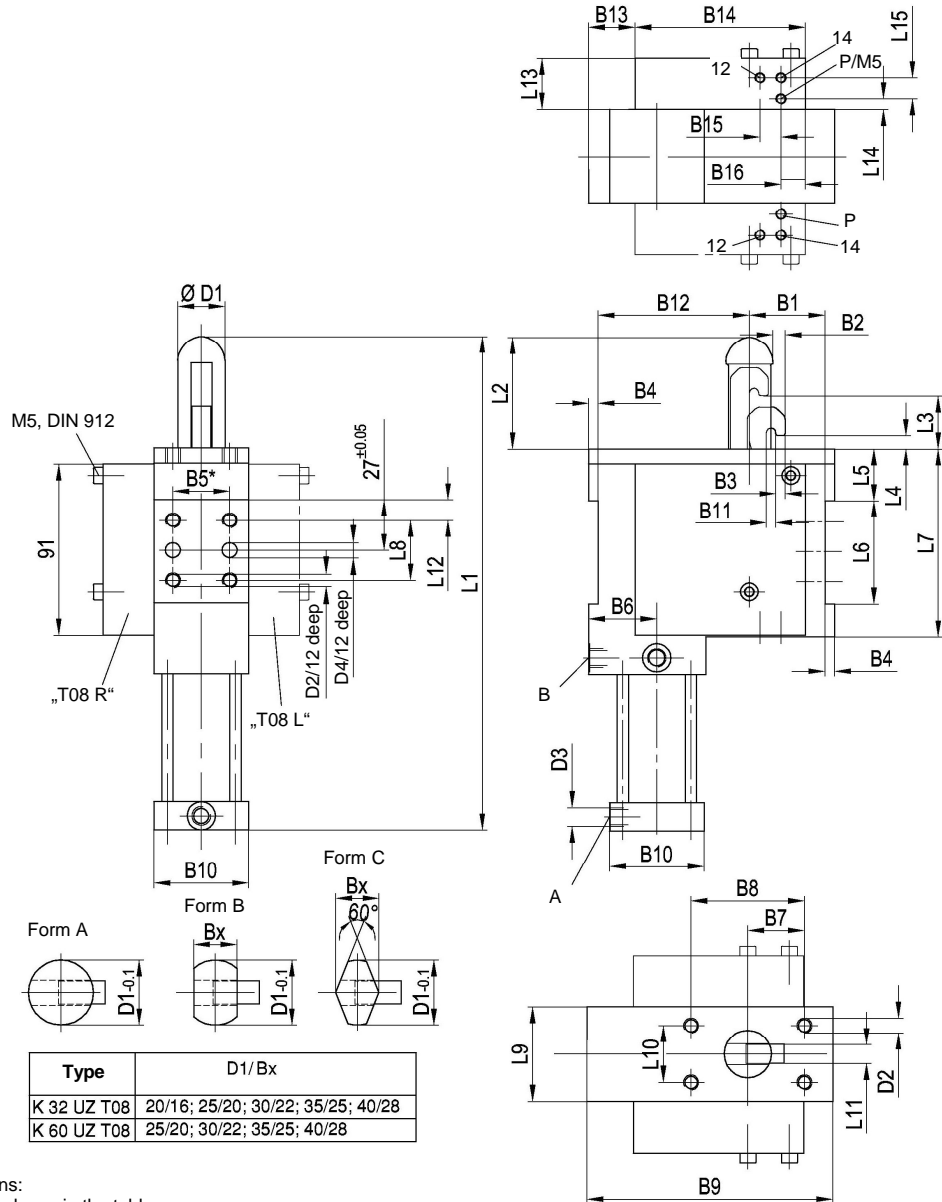


Underbody Clamp

with centering pin, self-locking type, for seat $\text{Ø}20 - 40 \text{ mm}$

K...UZ T08



Pin forms:

Type	D1/Bx
K 32 UZ T08	20/16; 25/20; 30/22; 35/25; 40/28
K 60 UZ T08	25/20; 30/22; 35/25; 40/28

** Ordering dimensions for special designs:
Please specify B3, B11, L4. Standard as shown in the table.

Ordering example:

K 32 UZ A30 T08 R B3 B11 L4
K 32 UZ B30/22 T08 R B3 B11 L4

K 32 UZ: Type
B: Pin form
30/22: Pin dimension
T08: Sensing system
R: Mounting right/left

Connections pneumatic sensing T08:

A: clamping
B: release clamping
P: pressure connection for sensing M5
14: control system A M5
12: control system B M5

* Tolerance for dowel holes ± 0.02 , for threaded holes ± 0.1 .
Medium: Air, max. 6 bar, operation permitted with oil-free air.
Maximum load (**) depends on diameter of dowel pin and geometry of the hook.

Ordering example Tünkers sensing system:

...T08 Pneumatic sensing

Attention!
External throttle check valves must be provided on assembly. They are not included in the scope of delivery!

Type	** Holding force max.	** Clamping force bei 6 bar	Piston Ø (mm)	Weight ~ (kg)
K 32 UZ T08	250 daN	180 daN	32	2,4
K 60 UZ T08	380 daN	330 daN	60	5,2

Type	B1 ± 0.1	B2	B3**	B4	B5*	B6	B7 ± 0.1	B8 ± 0.2	B9	B10	B11**	B12	B13	B14	B15	B16
K 32 UZ T08	45	6,5	5	5	30	41	30	60	140	50	5	85	26	90	10	11,5
K 60 UZ T08	45	7	6	5	30	40	30	60	145	65	8	90	31	90	10	11,5

Type	L1	L2	L3	L4**	L5 ± 0.1	L6 ± 0.1	L7 ± 0.1	L8 ± 0.1	L9	L10 ± 0.1	L11	L12 ± 0.1	L13	L14	L15	D1	D2	D3	D4 H7
K 32 UZ T08	262	59	28	7	25	55	100	32	50	30	10	11	27	12	10	20-40	M8	G1/8	8
K 60 UZ T08	308	68	31,5	7	25	55	100	32	50	30	12	11	27	12	10	25-40	M8	G1/4	8