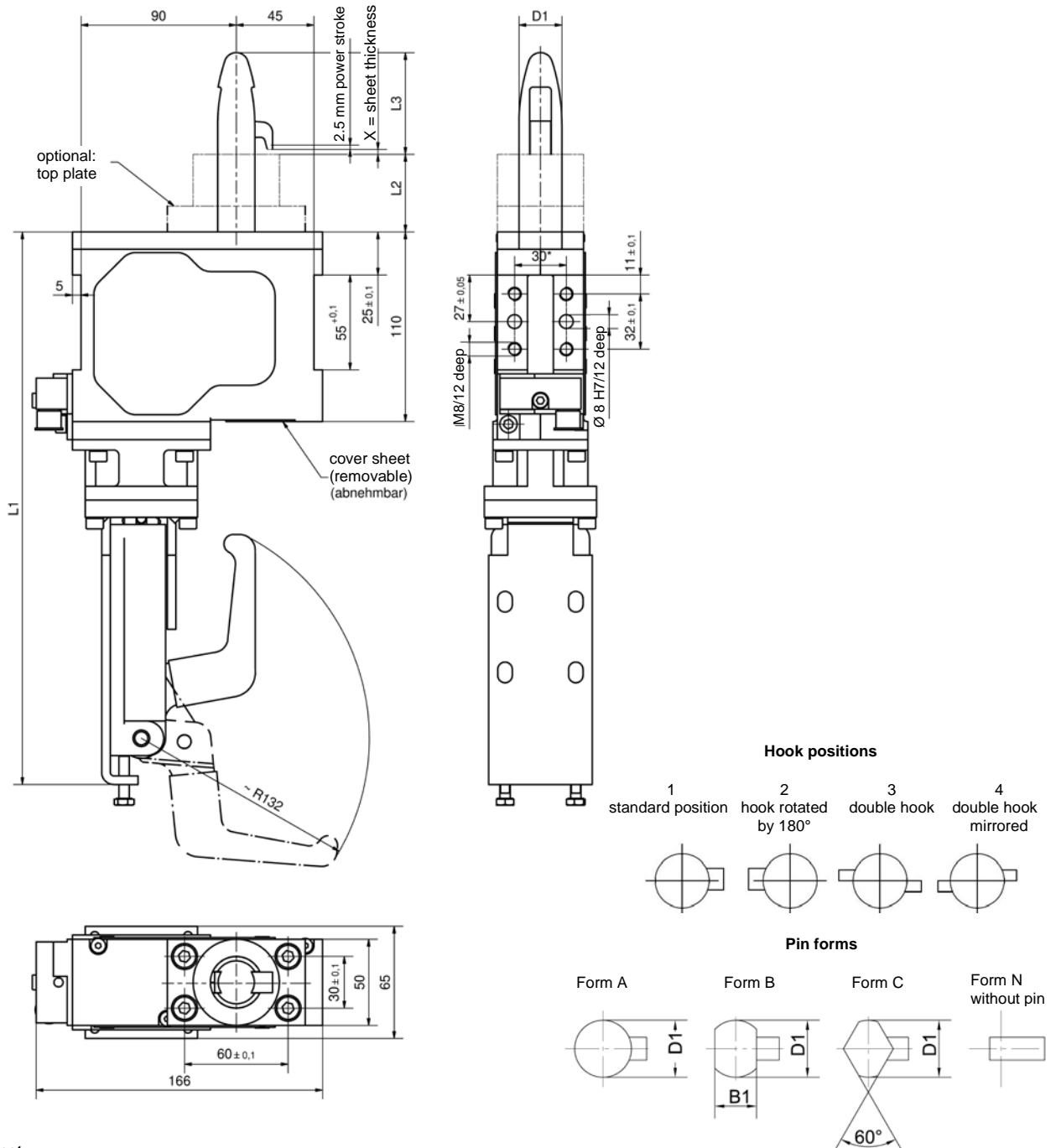


Underbody Clamp

manually operated, for positioning and clamping,
for locating pin Ø20-40 mm

MAPH 60 FUZ



Example for request:

MAPH 60 FUZ 1A30_45 T12 X=4.2
MAPH 60 FUZ 1A30_45 T12 X=2-4.5

MAPH 60 FUZ: Type
1: Hook position
A: Pin form
30: Pin diameter D1
45: Height L2
T12: Sensing system
X=4,2: Sheet thickness X

Attention:

External throttle check valves must be provided on assembly.
They are not included in the scope of delivery!

Please send your request example to our design office.

After checking your request you will receive an individual article number for the requested Underbody Clamp.

* Tolerance for dowel holes ± 0.02, for threaded holes ± 0.1.

Ordering code Tünkers sensing:

...T00 Without sensing system
... T12 Inductive sensor 24 V, 1 output with integrated LEDs

Description	Type	Holding force max.	Clamping force approx.	Weight ~ (kg)	L1	B1
Standard version	MAPH 60 FUZ	2800 N	2800 N	5,0	321	