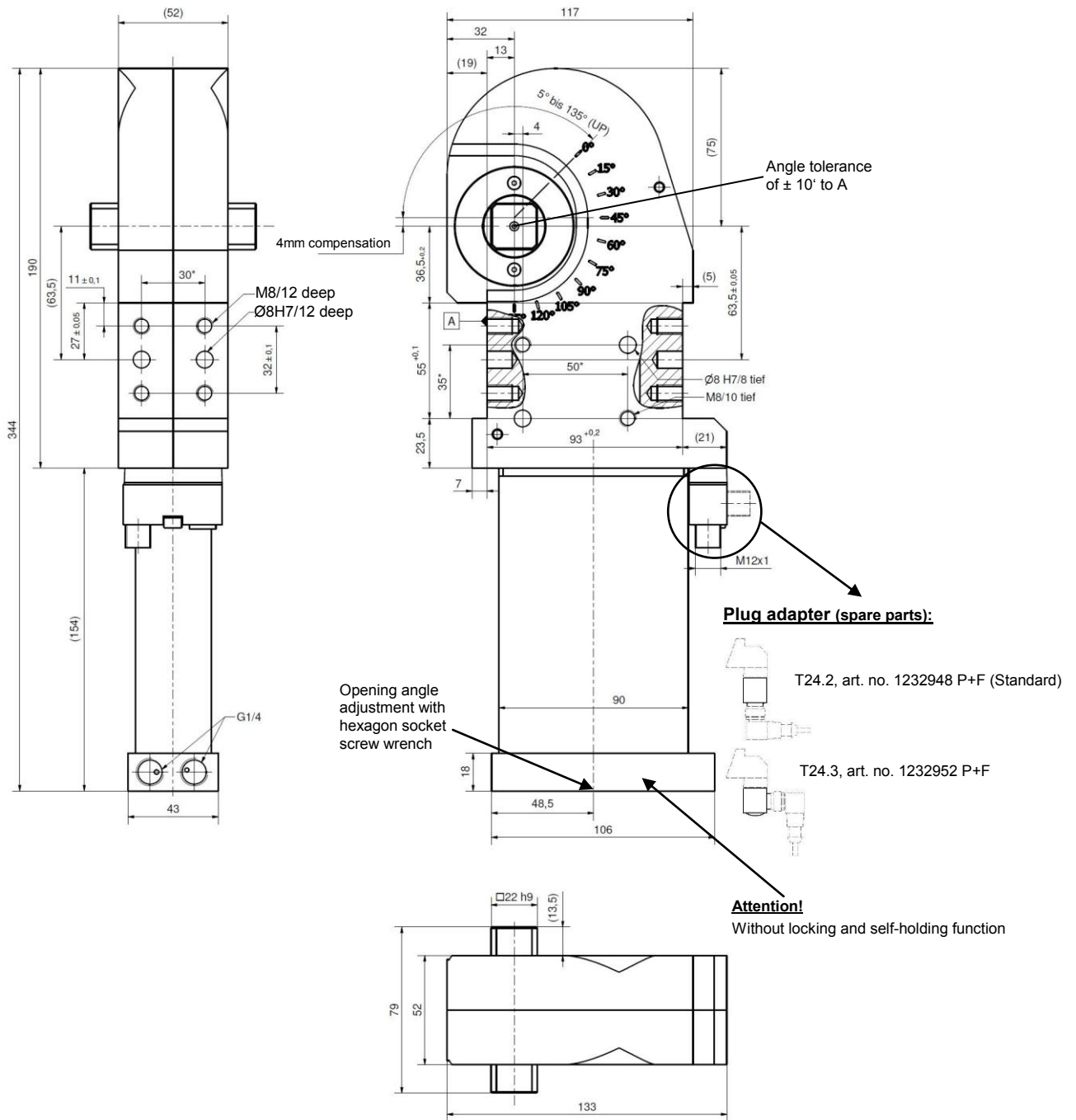


# Plane-parallel Clamp

with 4 mm power stroke, without locking and self-holding function,  
approx. 30% reduced air consumption

# UP 63



### Ordering example:

UP 63 A00 T24.2  
UP 63: Type  
A00: Without clamp arm  
T24.2: Sensing system (standard)

### Ordering example Tünkers sensing systems, two-piece:

...T24.1 Without plug adapter  
...T24.2 With straight plug adapter (standard)  
...T24.3 With plug adapter 90° angle

Plug adapter for inductive sensor 24 V,  
with integrated LED's, sensor plug M12x1

### Opening angles:

Stepless adjustable in the range of 5° to 135° (type UP 63)  
UP 63 A10/A40: max. 135°  
UP2 63 A10: max. 90°  
UP2 63 A40: max. 105°

### Options:

Version "H" – Pneumatic locking with stop valve in position "closed" (see separate data sheet)  
Version "HD" – Pneumatic locking with stop valve in position "closed" and "open" (see separate data sheet)  
Version "RB" Detent in the cylinder bottom

### Attention:

External throttle check valves must be provided on assembly. They are not included in the scope of delivery!

\* Tolerance for dowel holes  $\pm 0.02$ , for threaded holes  $\pm 0.1$ .

Medium: Air, max.6 bar, operation permitted with oil-free air.

| Type      | Holding force at 6 bar | Clamping force at 6 bar | Weight ~ (kg) |
|-----------|------------------------|-------------------------|---------------|
| UP/UP2 63 | 3000 N                 | 3000 N                  | 5.0           |