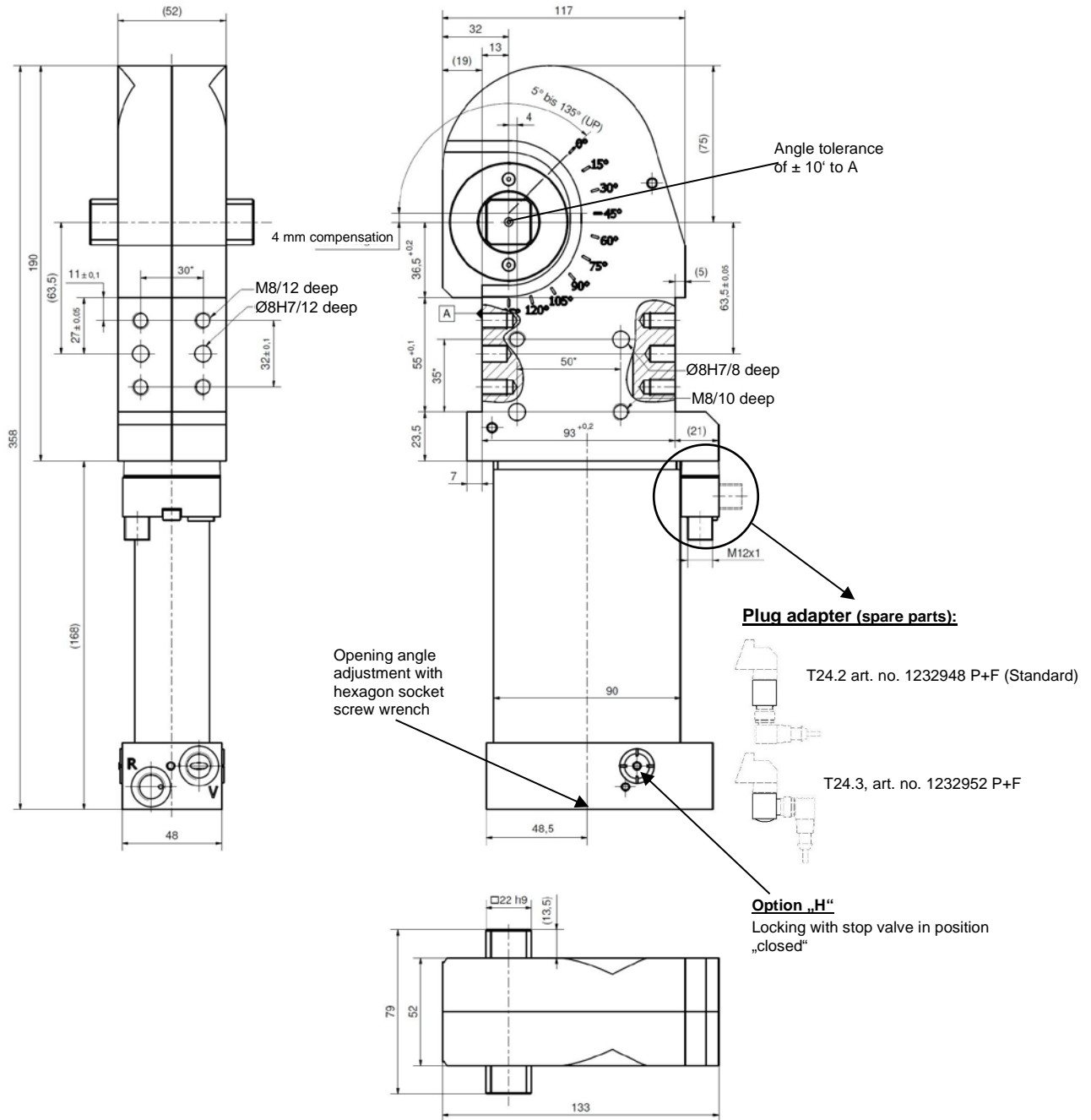


Plane-parallel Clamp

with 4 mm power stroke, with pneumatic locking and self-holding function, approx. 30% reduced air consumption

UP 63 H



Ordering example:

UP 63 H A00 T24.2

UP 63: Type
 H: Option: locking
 A00: Without clamp arm
 T24.2: Sensing system (standard)

Ordering example Tünkers sensing systems, two-piece:

...T24.1 Without plug adapter
 ...T24.2 With straight plug adapter (standard)
 ...T24.3 With plug adapter 90° angle

Plug adapter for inductive sensor 24 V, with integrated LED's, sensor plug M12x1

Opening angles:

Stepless adjustable in the range of 5° to 135° (type UP 63)
 UP 63 A10/A40: max. 135°
 UP2 63 A10: max. 90°
 UP2 63 A40: max. 105°

Options:

Version „“: without locking and self-holding function (see separate data sheet)
 Version „HD“: Pneumatic locking with stop valve in position "closed" and "open" (see separate data sheet)
 Version "RB" Detent in the cylinder bottom

Attention:

External throttle check valves must be provided on assembly. They are not included in the scope of delivery!

* Tolerance for dowel holes ± 0.02 , for threaded holes ± 0.1 .

Medium: Air, max.6 bar, operation permitted with oil-free air.

Type	Holding force at 6 bar	Clamping force at 6 bar	Weight ~ (kg)
UP/UP2 63 H	3000 N	3000 N	5.0