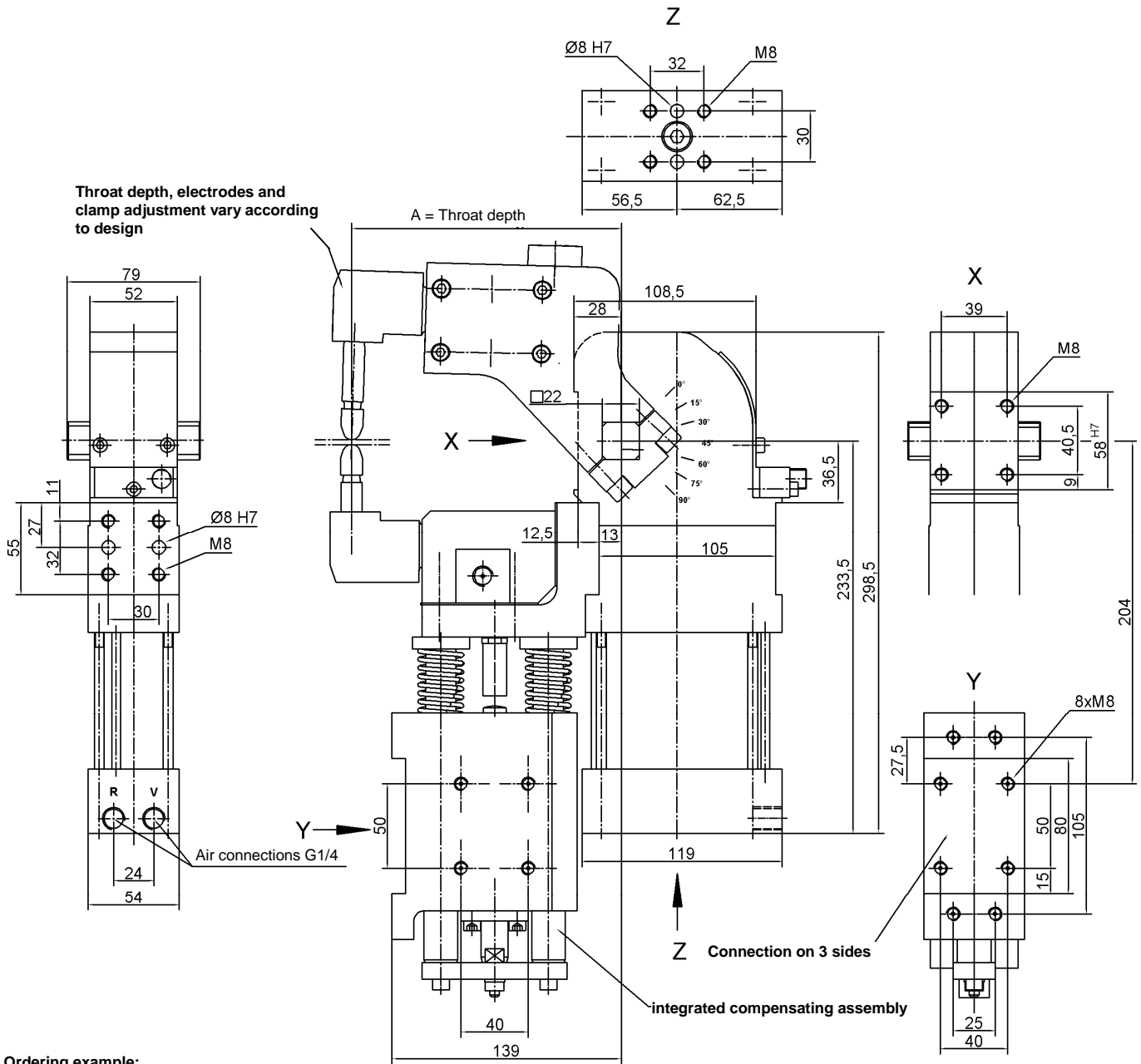


Welding Clamp

WSA 63.1

Power curve with adjusting function, clamp adjustment on the front



Ordering example:

WSA 63.1 ZF A200 T12 60°

WSA:	Type
63.1:	Piston Ø
ZF:	Clamp adjustment on the front
A200:	Throat depth of arm
T12:	Sensing system
60°:	Opening angle

Ordering example Tünkers sensing system:

...T12 Inductive sensing 24 V, 1 output with LEDs

Technical data:

Opening angle:	90°
Clamp adjustment:	10 mm stroke
Torque at 5 bar:	Mb = 400 Nm
at 6 bar:	Mb = 480 Nm

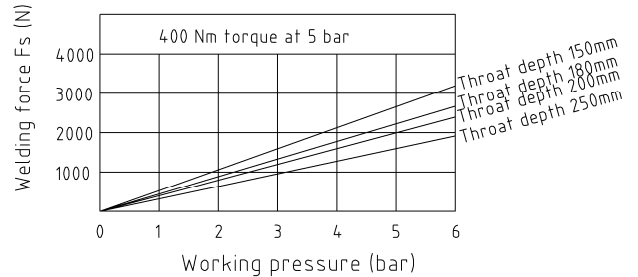
Welding force Fs at throat depth = 180 mm, adjusting distance 9 mm:

- 5 bar: Fs = 2200 N
- 6 bar: Fs = 2640 N

for further data please see diagram

Standard throat depths: 150, 180, 200, 250 mm, special throat depths on request.

Clamp weight: approx. 4 kg, installation weight varies according to design.



Attention! External throttle check valves must be provided on assembly. They are not included in the scope of delivery!

*Tolerance for dowel holes: ± 0.02, for threaded holes: ± 0.1.

Medium: Air, max. 6 bar, operation permitted with oil-free air.

