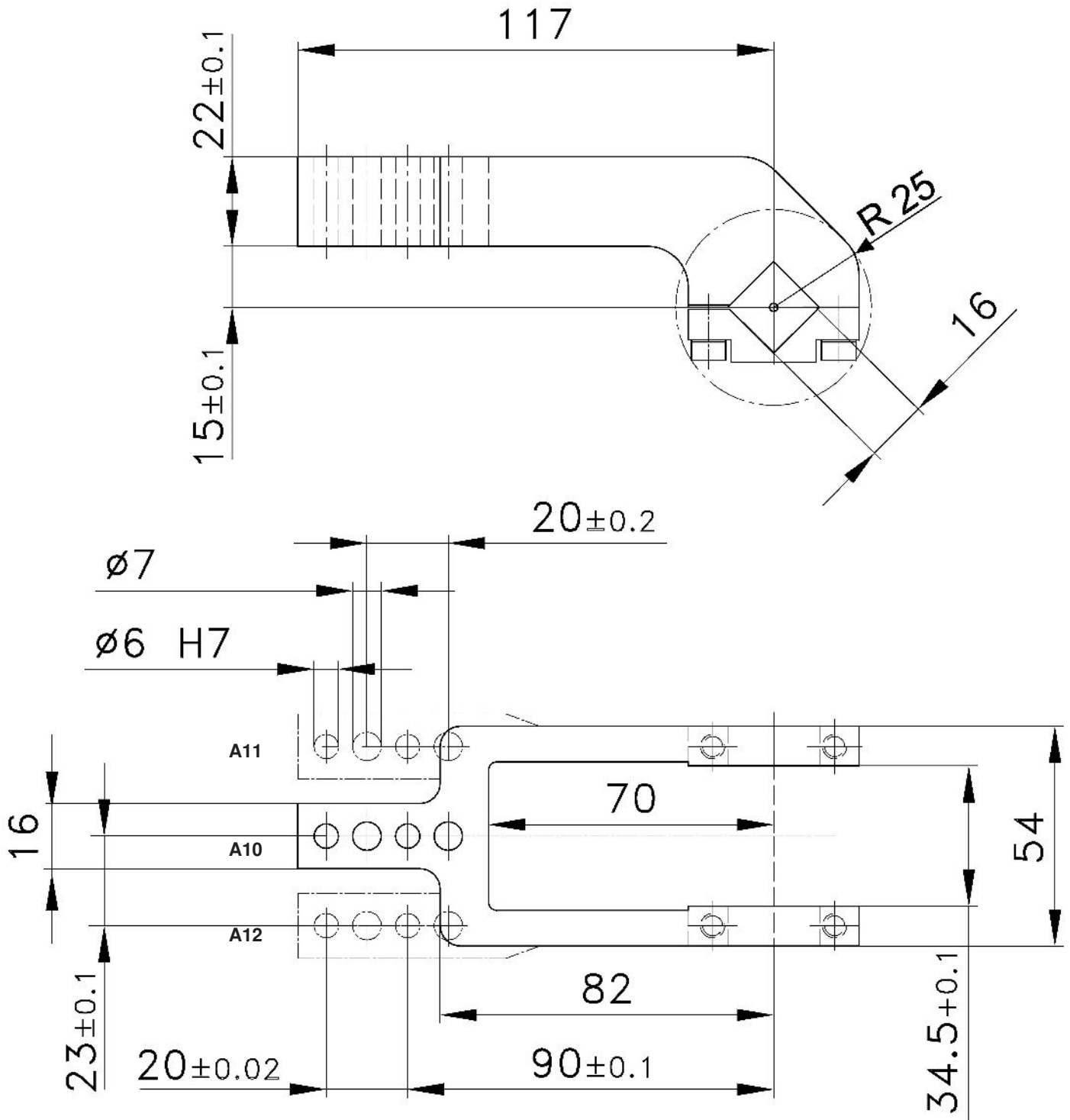


Clamp arms

for Clamps size 40 with an offset of 15 mm

A10, 11, 12



Ordering example clamp arm complete:
219528: Clamp arm complete A10 size 40

Ordering example for a complete clamp:
V 40 BR2 A10 T12

V 40 BR2: Type
A10: Clamp arm version
T12: Sensing system

Clamp size	Clamp arm version A10 order no.	Clamp arm version A11 order no.	Clamp arm version A12 order no.	Weight ~ (kg)
40	219528	235942	235943	0.5