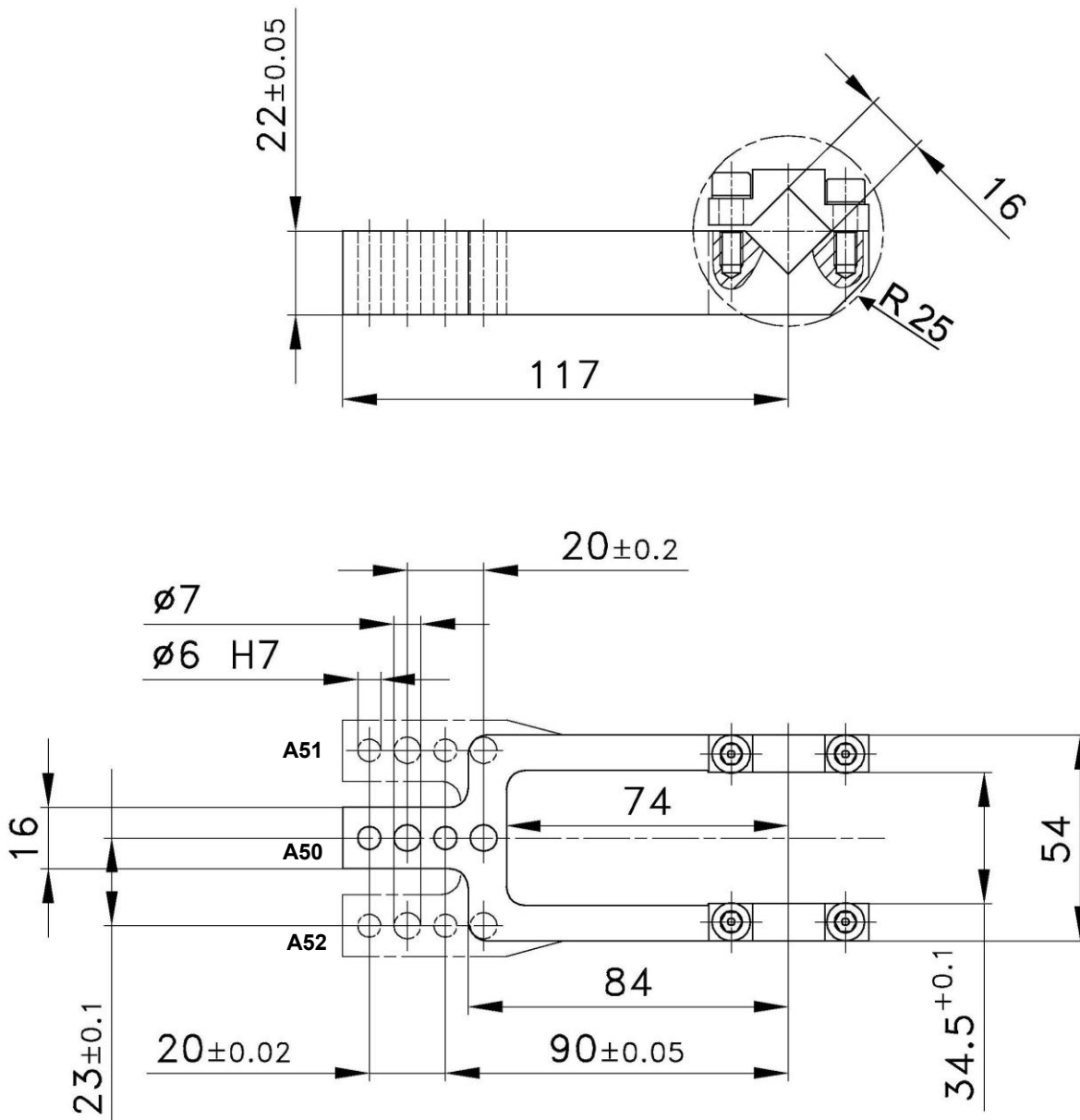


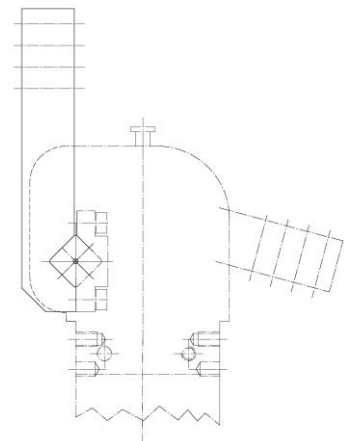
Clamp Arms

for Clamps size 40 with an offset of 0 mm,
clamp arm position 2 (vertical)

A50, A51, A52



View clamp arm position



Ordering example clamp arm complete:

235946: Clamp arm complete 2 A50 size 40

Ordering example for a complete clamp:

V2 40 BR2 A50 T12

V2 40 BR2: Type
A50: Clamp arm version
T12: Sensing system

Clamp size	Clamp arm version 2 A50 order no.	Clamp arm version 2 A51 order no.	Clamp arm version 2 A52 order no.	Weight ~ (kg)
40	235946	244555	244556	0.54