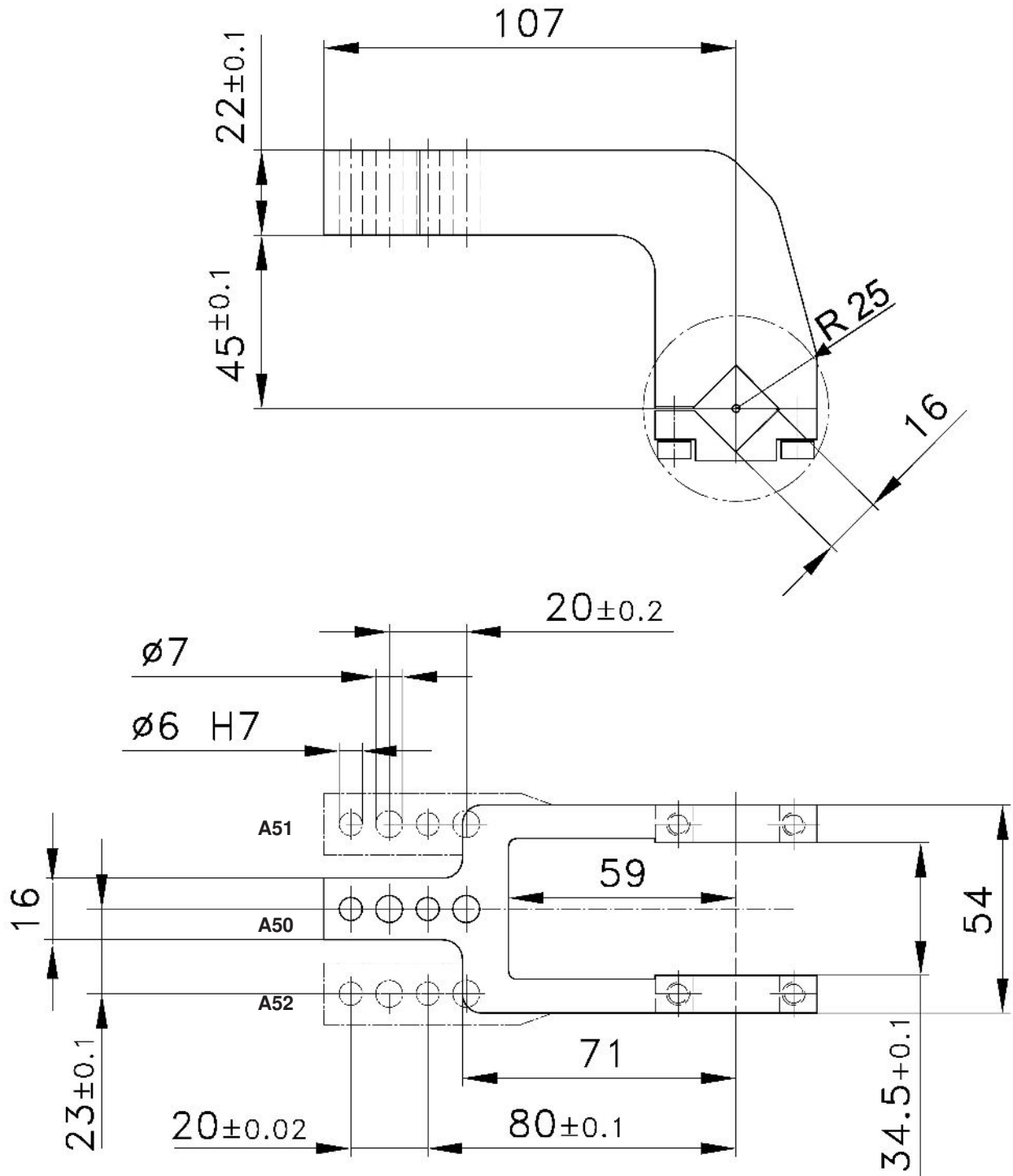


Clamp Arms

for Clamps size 40 with an offset of 45 mm

A50, A51, A52



Ordering example clamp arm complete:

235944: Clamp arm complete A50 size 40

Ordering example for a complete clamp:

V 40 BR2 A50 T12

V 40 BR2: Type
 A50: Clamp arm version
 T12: Sensing system

Clamp size	Clamp arm version A50 order no.	Clamp arm version A51 order no.	Clamp arm version A52 order no.	Weight ~ (kg)
40	235944	257015	257016	0.65